



HOXTON SQUARE, LONDON, N1
£625,000 LEASEHOLD

A WELL-PRESENTED TWO DOUBLE BEDROOM TWO BATHROOM APARTMENT SET ON THE POPULAR HOXTON SQUARE

Shoreditch | 020 7749 7650 | shoreditch@winkworth.co.uk

Winkworth



DESCRIPTION:

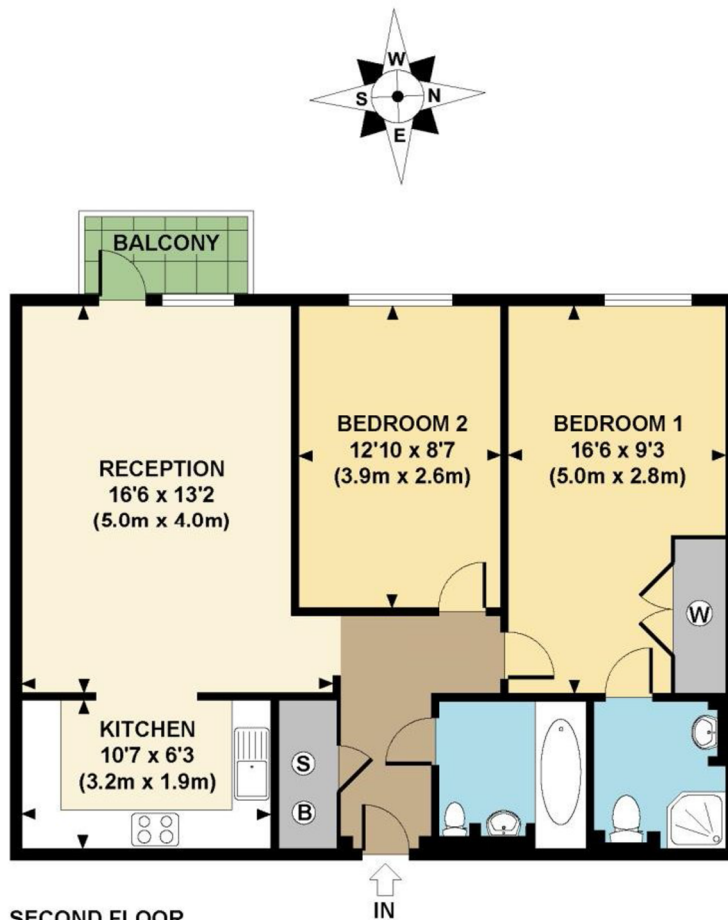
A bright second floor two-bedroom, two-bathroom apartment on Hoxton Square with secure underground parking and a private balcony. The apartment spans 682 sq. ft. and offers an open plan living room/ kitchen, two double bedrooms, the en-suite with fitted wardrobes a storage cupboard in the hallway, a private West facing balcony, and a family bathroom.

The development is on the peaceful end of Hoxton Square, surrounded by trendy cafes, boutique shops, and art galleries, all within short distance. You can also immerse yourself in vibrant street art, local culture, and diverse culinary experiences, ranging from Nobu to The Clove Club to Cay Tre. Transportation links are excellent, with easy access to various bus routes and proximity to Old Street, Shoreditch High Street, and Liverpool Street underground stations. This ensures seamless connectivity to central London and other destinations, making it ideal for those seeking well-connected transportation options. Shoreditch is also a short walk from the City of London financial district and Spitalfields Market.

Winkworth



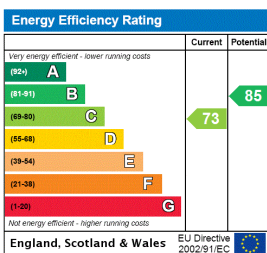
Winkworth



SECOND FLOOR
GROSS INTERNAL
FLOOR AREA 682 SQ FT

APPROX. GROSS INTERNAL FLOOR AREA 682 SQ FT / 63.4 SQ M

This floorplan is for illustration purposes only and is not to scale. The position and size of doors, windows, appliances and other features are approximate.



Shoreditch | 020 7749 7650 | shoreditch@winkworth.co.uk



winkworth.co.uk

See things differently

Winkworth wishes to inform prospective buyers and tenants that these particulars are a guide and act as information only. All our details are given in good faith and believed to be correct at the time of printing but they don't form part of an offer or contract. No Winkworth employee has authority to make or give any representation or warranty in relation to this property. All fixtures and fittings, whether fitted or not are deemed removable by the vendor unless stated otherwise and room sizes are measured between internal wall surfaces, including furnishings.