



ABBOTSBURY ROAD, W14
£2,900,000 FREEHOLD

A BRIGHT AND LOW BUILT FOUR BEDROOM HOUSE WITH EXCELLENT ENTERTAINING SPACE, A WEST FACING REAR GARDEN, GARAGE AND OFF-STREET PARKING.

Kensington | 020 7727 1500 | kensington@winkworth.co.uk

Winkworth

for every step...

winkworth.co.uk



DESCRIPTION:

A bright and low built four bedroom house with excellent entertaining space, a west facing rear garden, garage and off street parking. Accommodation includes a reception room overlooking Holland Park, dining room, kitchen, principal bedroom with en suite bathroom, three further bedrooms, further bathroom, cloakroom and integral garage/utility room.

Abbotsbury Road is a cherry tree lined street which runs between Holland Park Avenue and Kensington High Street and is close to many excellent shops, restaurants and transport facilities. The green open spaces of Holland Park are opposite the house.

ACCOMMODATION:

Entrance Hall | Reception Room | Dining Room | Kitchen | Principal Bedroom With En Suite | Bathroom | Three Further Bedrooms | Further Bathroom | Cloakroom | Integral Garage/Utility Room | Off Street Parking | West Facing Rear Garden

LOCAL AUTHORITY:

The Royal Borough of Kensington & Chelsea

NEAREST PUBLIC TRANSPORT:

Holland Park (Central Line)

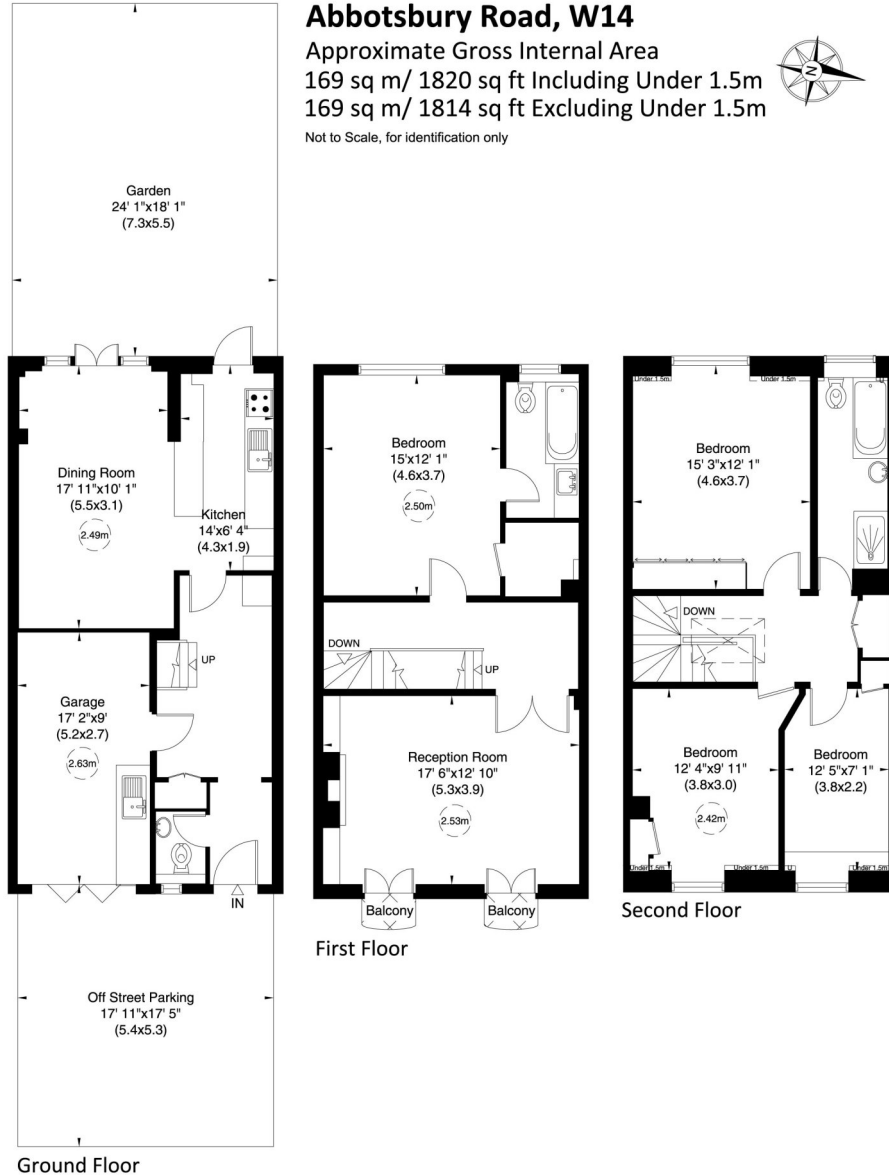


Abbotsbury Road, W14

Approximate Gross Internal Area
 169 sq m/ 1820 sq ft Including Under 1.5m
 169 sq m/ 1814 sq ft Excluding Under 1.5m



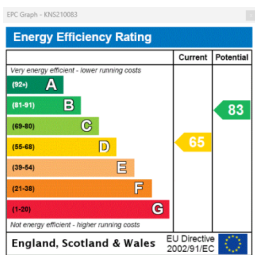
Not to Scale, for identification only



For guidance only and must not be relied upon as a statement of fact.
 All measurements and areas are approximate only (and have been prepared in accordance with the current edition of the RICS Code of Measuring Practice).



This floorplan is for illustration purposes only and is not to scale. The position and size of doors, windows, appliances and other features are approximate.



Tenure: Freehold
Council tax band: H

Please note all figures are approximate

Kensington | 020 7727 1500 | kensington@winkworth.co.uk



for every step...

winkworth.co.uk

Winkworth wishes to inform prospective buyers and tenants that these particulars are a guide and act as information only. All our details are given in good faith and believed to be correct at the time of printing but they don't form part of an offer or contract. No Winkworth employee has authority to make or give any representation or warranty in relation to this property. All fixtures and fittings, whether fitted or not are deemed removable by the vendor unless stated otherwise and room sizes are measured between internal wall surfaces, including furnishings.