



**WESTBOURNE CRESCENT, BAYSWATER, W2**  
**£995,000 LEASEHOLD**

**WITH CLOSE PROXIMITY TO HYDE PARK, SET IN THIS HANDSOME STUCCO FRONTED NON-LISTED PERIOD BUILDING, ON A SOUGHT AFTER BAYSWATER CRESCENT - A BEAUTIFULLY PRESENTED, LIGHT AND WELL-PROPORTIONED TWO BEDROOM, TWO BATHROOM, FOURTH FLOOR (WITH LIFT) APARTMENT.**

Paddington & Bayswater | 020 7467 5770 | paddington@winkworth.co.uk

**Winkworth**

for every step...

*winkworth.co.uk*



**DESCRIPTION:** With close proximity to Hyde Park, set in this handsome stucco fronted non-listed period building, on a sought after Bayswater Crescent - a beautifully presented, light and well-proportioned two bedroom, two bathroom, fourth floor (with lift) apartment. Westbourne Crescent is an attractive and sought after street, running between Westbourne Terrace and Gloucester Terrace. It is ideally placed for Paddington Station (Bakerloo, District & Circle and Hammersmith & City Underground lines, the Elizabeth line, Heathrow Express and National Rail) and Lancaster Gate Station (Central Line). Hyde Park and Kensington Gardens are only moments away.

LEASEHOLD, PLUS SHARE OF FREEHOLD: ABOUT 982 YEARS REMAINING | SERVICE CHARGE: ABOUT £3,700 P.A | GROUND RENT: PEPPERCORN | COUNCIL TAX BAND: F



**Winkworth**

for every step...

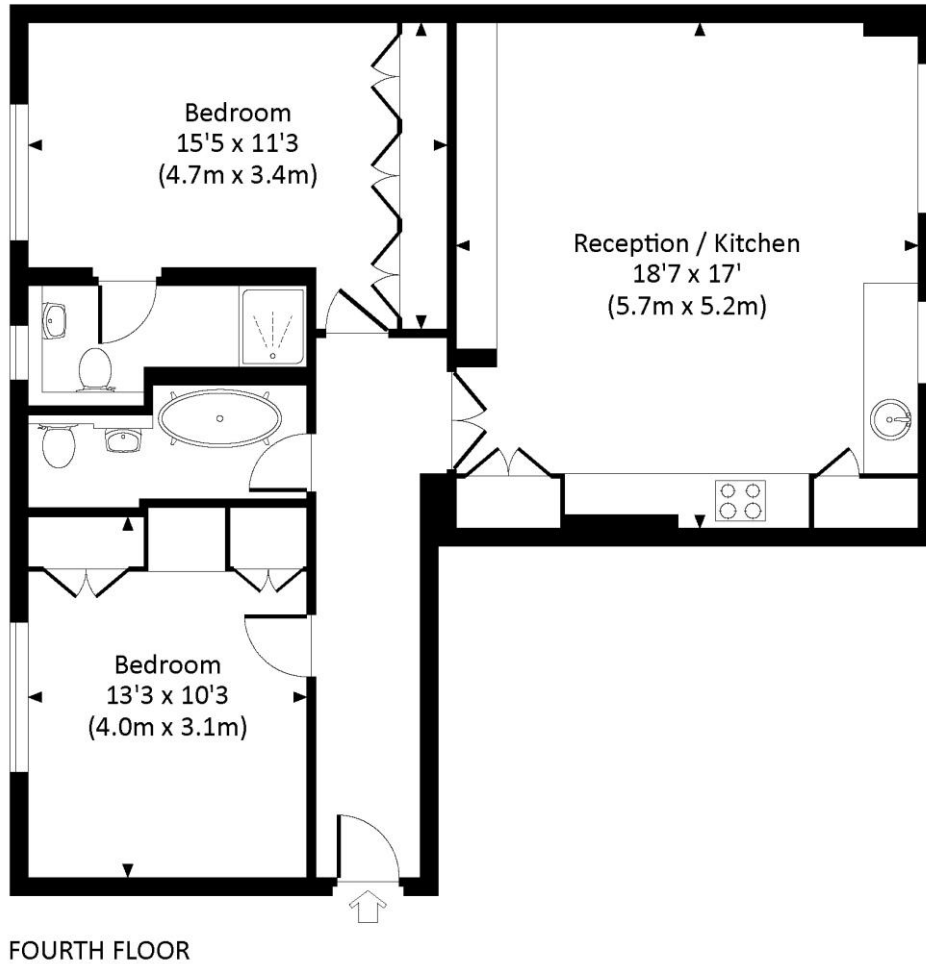


**Winkworth**

for every step...

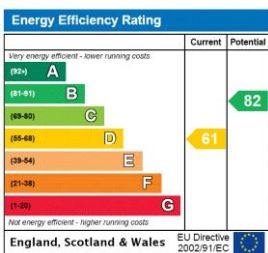
# WESTBOURNE CRESCENT, W2

Approx. gross internal area  
794 Sq Ft. / 73.8 Sq M.



All measurements have been made in accordance with RICS Code of Measuring Practice which are approximate only and only for illustrative purposes. For the avoidance of doubt, Dowling Jones Design shall not be liable for any reliance on these measurements. © 2016 www.dovlingjones.com 020 7610 9933

This floorplan is for illustration purposes only and is not to scale. The position and size of doors, windows, appliances and other features are approximate.



Paddington & Bayswater | 020 7467 5770 | paddington@winkworth.co.uk

# Winkworth

for every step...

[winkworth.co.uk](http://winkworth.co.uk)

Winkworth wishes to inform prospective buyers and tenants that these particulars are a guide and act as information only. All our details are given in good faith and believed to be correct at the time of printing but they don't form part of an offer or contract. No Winkworth employee has authority to make or give any representation or warranty in relation to this property. All fixtures and fittings, whether fitted or not are deemed removable by the vendor unless stated otherwise and room sizes are measured between internal wall surfaces, including furnishings.