



WHELER STREET, LONDON, E1  
£1,190,000 LEASEHOLD

## A BEAUTIFULLY PRESENTED TWO BEDROOM MAISONETTE IN A STUNNING WAREHOUSE CONVERSION

Shoreditch | 020 7749 7650 | shoreditch@winkworth.co.uk

**Winkworth**

*winkworth.co.uk*

See things differently



## DESCRIPTION:

Being offered chain free is this fully renovated maisonette located in a boutique warehouse conversion situated at the Shoreditch end of Commercial Street. The building consists of 23 apartments and has an internal courtyard.

On the ground floor you have generous dual aspect living/dining space with double doors leading into the communal courtyard which can be used to relax and storing bicycles. The new kitchen is fully fitted with real wooden doors and has built-in Bosch white goods with oven and microwave by Neff. The floor is engineered Oakwood with underlayer of insulation for energy efficiency.

On the second floor you have two large double bedrooms with fitted wardrobes, newly family bathroom with walk-in shower, a separate office space/ box room with approved planning permission to add window to external wall, and wooden flooring throughout.

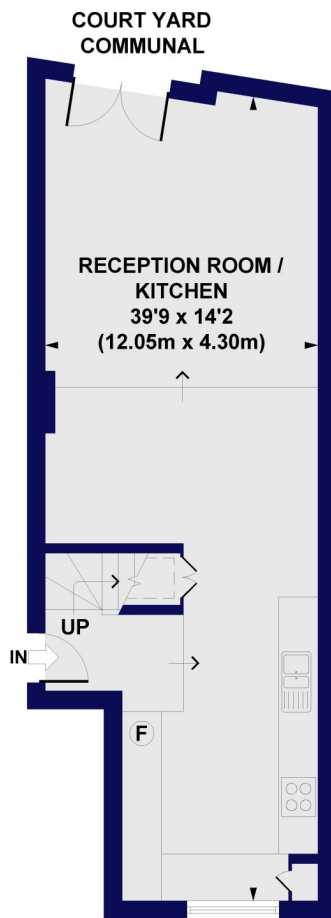
Situated just off Commercial Street you are in the heart of Shoreditch and a stone's throw from the famous Spitalfields market and Brick Lane with their boutique shops, pop ups, cafes, bars and restaurants at your disposal. The property also benefits from an abundance of transport links close at hand with Shoreditch High Street (Overground), London Liverpool Street, Aldgate, Aldgate East and Whitechapel (Elizabeth Line) a short walk away offering fantastic access across London.

**Winkworth**



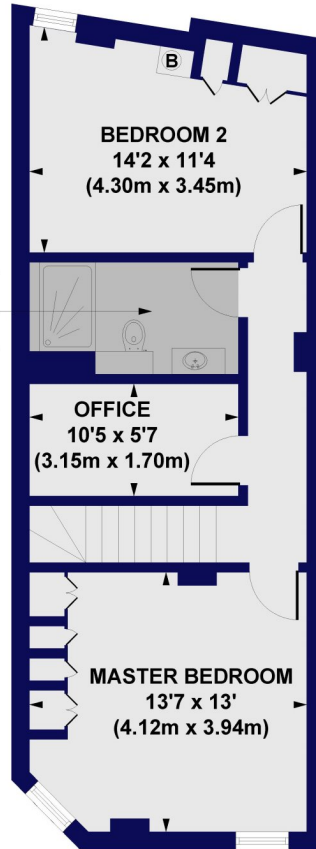
**Winkworth**

**Wheler Street, E1**  
**Approx. Gross Internal Floor Area 1120 sq. ft / 104 sq. m**



**GROUND FLOOR**  
**GROSS INTERNAL**  
**FLOOR AREA 510 SQ FT**

**SHOWER ROOM**  
**10'7 x 5'7**  
**(3.20m x 1.70m)**

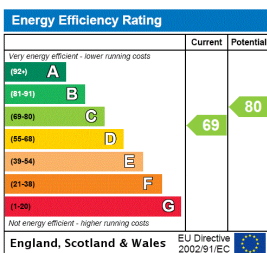


**FIRST FLOOR**  
**GROSS INTERNAL**  
**FLOOR AREA 544 SQ FT**

All measurements of walls, doors, windows, fittings and appliances, including their size and location, are shown as standard sizes and do not constitute any warranty or representation by the seller, their agent or CP Creative. Any intending purchaser must satisfy himself by inspection or otherwise as to the correctness of the information contained in these plans. This plan is for illustrative purposes only and should be used as such by any prospective purchasers.

**Winkworth**

This floorplan is for illustration purposes only and is not to scale. The position and size of doors, windows, appliances and other features are approximate.



Shoreditch | 020 7749 7650 | shoreditch@winkworth.co.uk



winkworth.co.uk

See things differently

Winkworth wishes to inform prospective buyers and tenants that these particulars are a guide and act as information only. All our details are given in good faith and believed to be correct at the time of printing but they don't form part of an offer or contract. No Winkworth employee has authority to make or give any representation or warranty in relation to this property. All fixtures and fittings, whether fitted or not are deemed removable by the vendor unless stated otherwise and room sizes are measured between internal wall surfaces, including furnishings.