



**BRONDESBURY ROAD, NW6**  
**£1,850 PER MONTH FURNISHED**

**MODERN, ONE BEDROOM APARTMENT FURNISHED\*,  
WITH HIGH CEILINGS, LOTS OF STORAGE AND  
BENEFITTING FROM A RECENT DECORATION.**

**Kensal Rise & Queens Park | 0208 960 4947 |**  
**kensalrise@winkworth.co.uk**

**Winkworth**

**for every step...**

*winkworth.co.uk*



## **DESCRIPTION:**

NEW - Winkworth are delighted to offer this modern, recently decorated and carpeted, first floor, one bedroom apartment to the lettings market.

With high ceilings, lots of storage in both the large double bedroom (with ceiling height built in wardrobes) and plenty of space in the kitchen,

Tenants will love how natural light floods through large windows in both the bedroom and living room and how the living room is located next door to the kitchen.

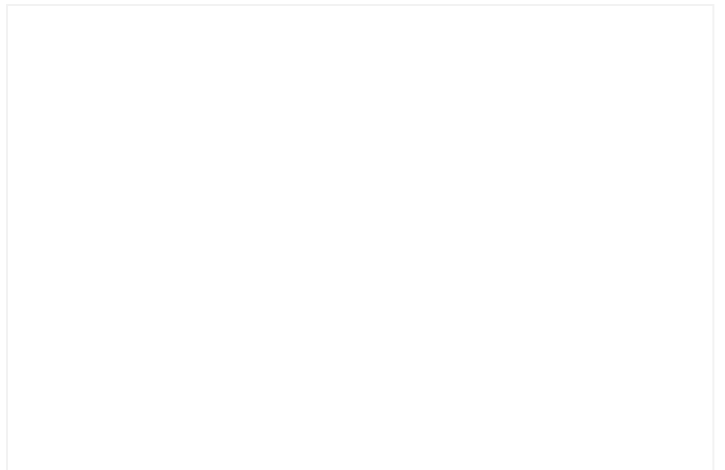
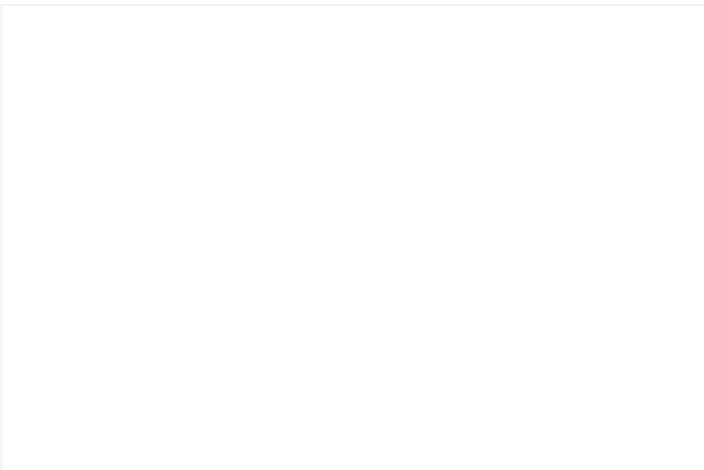
There is also a fully tiled bathroom with power shower and additional storage in the vanity unit.

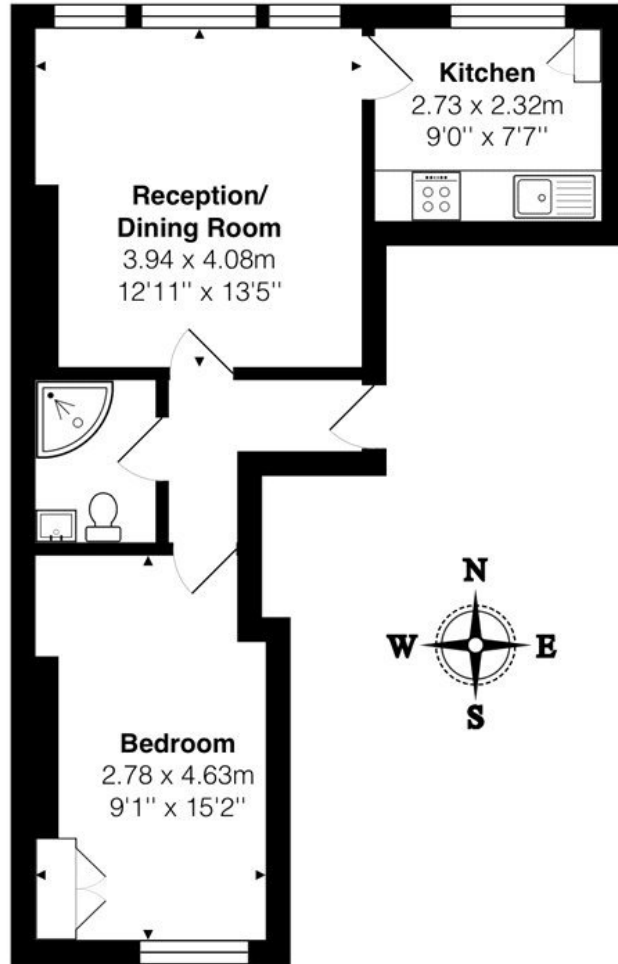
\*Furnished - The property will be provided with the furnishing as per the pictures however the TV will be removed

## **Location**

Brondesbury Road is a wide tree lined street running from Queens Park to Kilburn. With large period properties and the local amenities of Salusbury Road to include Gail's, The Alice House, Heath Stores and Gyms.

Not forgetting the ever popular Queens Park Market that runs on a Sunday, this located is extremely desirable.





**Top Floor**

Total Area: 42.4 m<sup>2</sup> ... 456 ft<sup>2</sup>

All measurements are approximate and for display purposes only

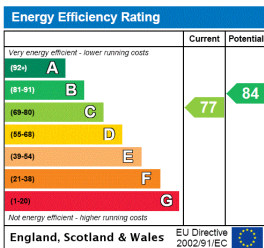
This floorplan is for illustration purposes only and is not to scale. The position and size of doors, windows, appliances and other features are approximate.

**Deposit:** 5 weeks rent

**Holding Deposit:** 1 weeks rent

**Council Tax Band:** C

where no figures are shown, we have been unable to ascertain the information. All figures that are shown were correct at the time of printing.



Kensal Rise & Queens Park | 0208 960 4947 | kensalrise@winkworth.co.uk

for every step...

winkworth.co.uk

winkworth wishes to inform prospective buyers and tenants that these particulars are a guide and act as information only. All our details are given in good faith and believed to be correct at the time of printing but they don't form part of an offer or contract. No Winkworth employee has authority to make or give any representation or warranty in relation to this property. All fixtures and fittings, whether fitted or not are deemed removable by the vendor unless stated otherwise and room sizes are measured between internal wall surfaces, including furnishings.