



ARCHDALE ROAD, EAST DULWICH, LONDON, SE22
£1,400,000 FREEHOLD

AN IMMACULATELY PRESENTED AND IMPECCABLY DRESSED VICTORIAN TERRACED HOME SITUATED IN A FANTASTIC LOCATION IN SE22.

Dulwich | 020 8299 2722 | dulwich@winkworth.co.uk

Tenure Freehold | Council Tax Band D – London Borough of Southwark |

Winkworth

winkworth.co.uk

See things differently



DESCRIPTION:

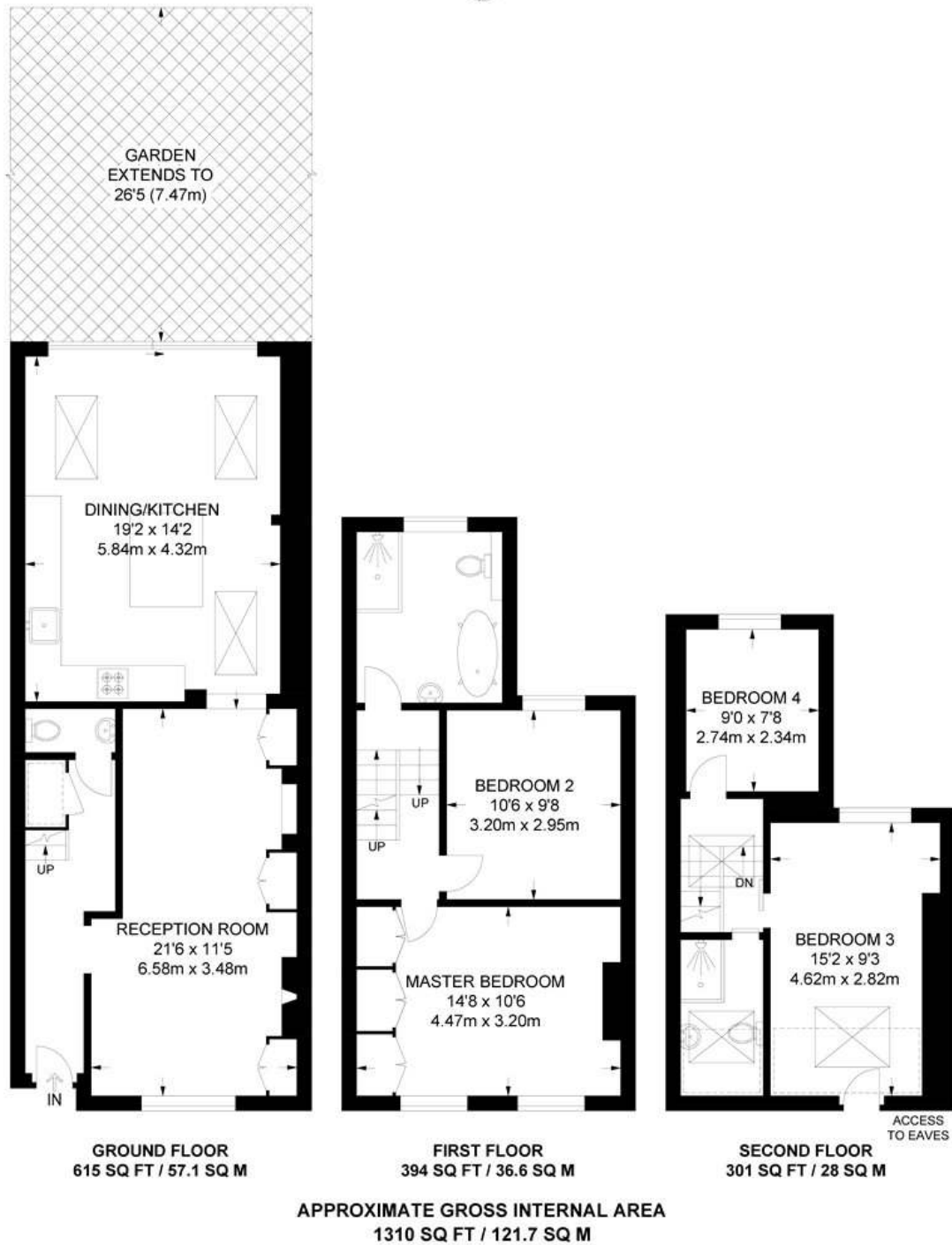
An immaculately presented and impeccably dressed Victorian terraced home situated in a fantastic location in SE22. This stunning family home is offered to the market in fantastic condition. Refurbished and extended from top to bottom, the ground floor boasts parquet engineered wood flooring throughout a gorgeous reception, a spacious WC and open plan kitchen diner. Bespoke sliding glass doors allow access to a charming garden with spacious patio and large lawned area. The first floor comprises a beautiful master to front with built in wardrobes, a large family bathroom with shower and freestanding bath and large a double bedroom. The loft has been converted to allow two doubles and further shower room. The location offers fantastic access to Lordship Lane, with its impressive array of shops, bars and restaurants. School catchments are in abundance with Heber, Harris and Charter East secondary to name a few. Transport links are provided via a short walk to East Dulwich station for direct links to London Bridge or a short bus to Denmark Hill for the overground.

AT A GLANCE

- Four Double Bedrooms
- Built-in Wardrobes
- Large Modern Kitchen
- Family Bathroom
- New Refurbished
- Fantastic Location







This floorplan is for illustration purposes only and is not to scale. The position and size of doors, windows, appliances and other features are approximate.

Dulwich | 020 8299 2722 | dulwich@winkworth.co.uk



winkworth.co.uk

See things differently

Winkworth wishes to inform prospective buyers and tenants that these particulars are a guide and act as information only. All our details are given in good faith and believed to be correct at the time of printing but they don't form part of an offer or contract. No Winkworth employee has authority to make or give any representation or warranty in relation to this property. All fixtures and fittings, whether fitted or not are deemed removable by the vendor unless stated otherwise and room sizes are measured between internal wall surfaces, including furnishings.