



ORSETT TERRACE, PADDINGTON, W2
GUIDE PRICE £650,000 LEASEHOLD

A BEAUTIFULLY PRESENTED, LIGHT, FIRST FLOOR, TWO BEDROOM APARTMENT, WITH HIGH CEILINGS (IN EXCESS OF 3M), A SOUTH FACING ORNAMENTAL BALCONY AND SET IN AN ATTRACTIVE PERIOD CONVERSION.

LEASE LENGTH: 999 YEARS | SERVICE CHARGE: ABOUT £3,300 PER ANNUM | GROUND RENT: ABOUT £100 PER ANNUM (WITH ESCALATOR) | COUNCIL TAX: E

Paddington | 020 7467 5770 | paddington@winkworth.co.uk

Winkworth

for every step...

winkworth.co.uk



DESCRIPTION:

Close proximity to Paddington mainline station and only a short stroll to Hyde Park and Kensington Gardens.

The property is located within easy access to local shops and amenities; including your local Waitrose. The nearest transport links are Royal Oak Underground station (Hammersmith and Circle lines) and both Paddington mainline and Underground stations (Hammersmith, Circle, District and Bakerloo lines).



Winkworth

for every step...



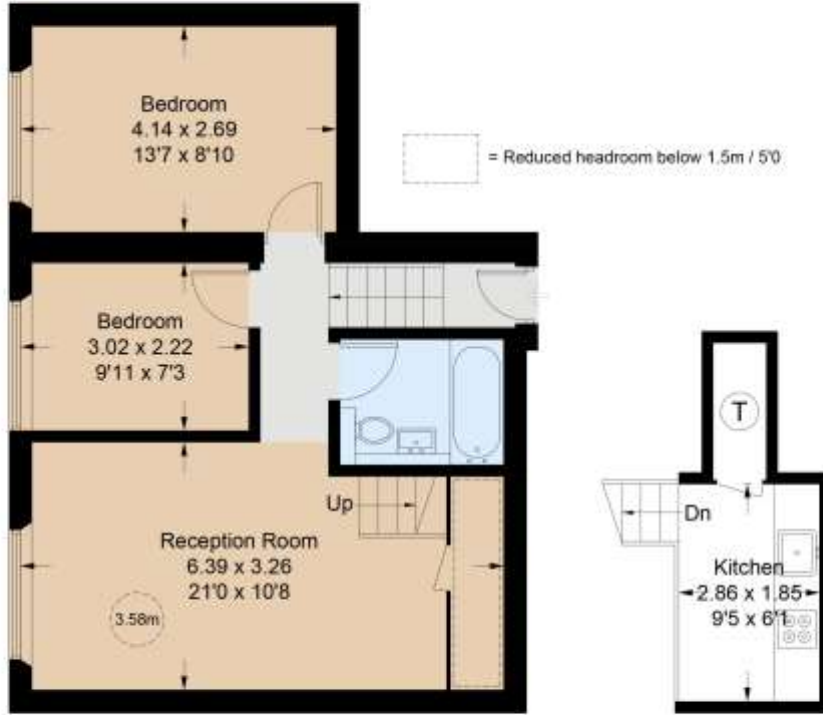
Winkworth

for every step...

Orsett Terrace



Approximate Gross Internal Area = 54.6 sq m / 588 sq ft

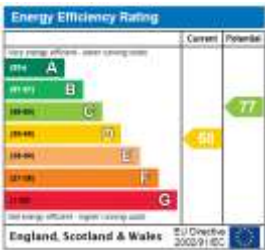


First Floor

Mezzanine

Illustration for identification purposes only, measurements are approximate, not to scale. floorplansUsketch.com © (ID1014274)

This floorplan is for illustration purposes only and is not to scale. The position and size of doors, windows, appliances and other features are approximate.



Paddington | 020 7467 5770 | paddington@winkworth.co.uk



for every step...

winkworth.co.uk

Winkworth wishes to inform prospective buyers and tenants that these particulars are a guide and act as information only. All our details are given in good faith and believed to be correct at the time of printing but they don't form part of an offer or contract. No Winkworth employee has authority to make or give any representation or warranty in relation to this property. All fixtures and fittings, whether fitted or not are deemed removable by the vendor unless stated otherwise and room sizes are measured between internal wall surfaces, including furnishings.