



LINSLADE HOUSE, WHISTON ROAD, LONDON, E2
OIEO £475,000 LEASEHOLD

A SPACIOUS, THREE BEDROOM APARTMENT WITH ITS OWN FRONT DOOR AND PRIVATE FRONT GARDEN.

Hackney | 020 8986 4216 | hackney@winkworth.co.uk

Winkworth

winkworth.co.uk

See things differently



DESCRIPTION:

A sizeable, three double bedroom apartment set across the ground floor of this popular estate in Hackney, E2. Standing at 705sqft, the property offers a wealth of space and benefits from entrance through its own front garden. Upon entering through your own front door, you are welcomed into a wonderful bright, east facing reception room. The kitchen is separate and is well portioned and the property is finished with three good sized bedrooms, with plentiful space for storage and a bath/shower room with separate W.C.

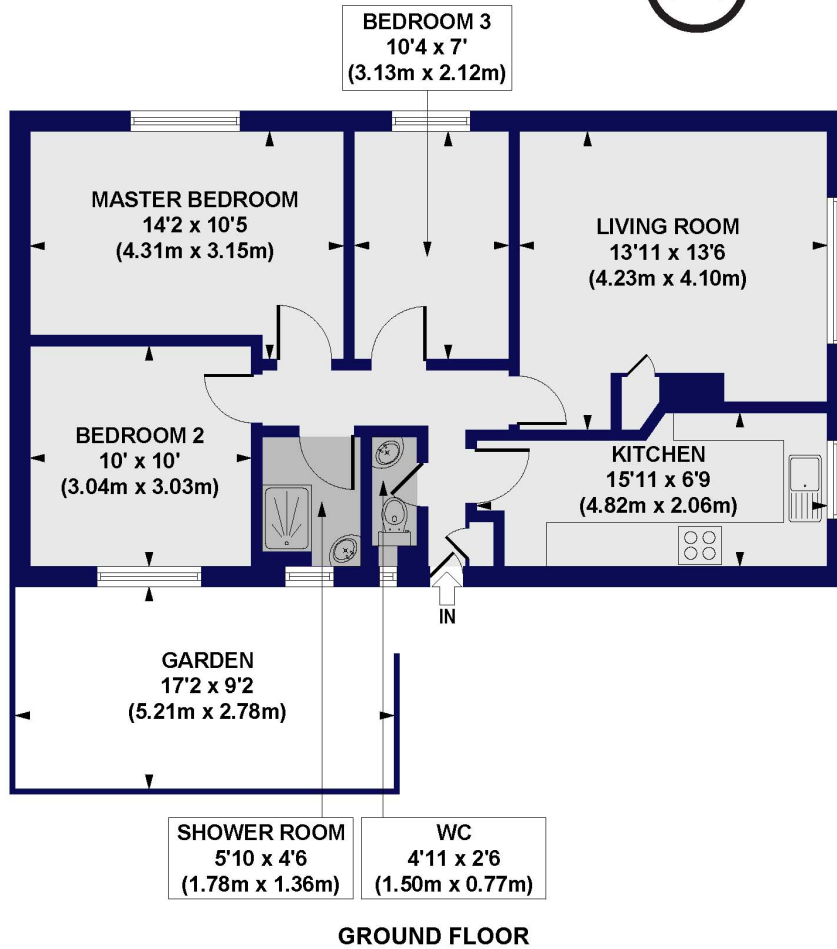
The property is within proximity to Hoxton & Haggerston Overground Stations, Hoxton Square, Shoreditch and Old Street (Northern Line), all with a vast range of local amenities, boutique shops, cafes, bars and restaurants on your doorstep. The property also benefits from being close to multiple bus routes across the City meaning quick and easy access across London.

Winkworth



Winkworth

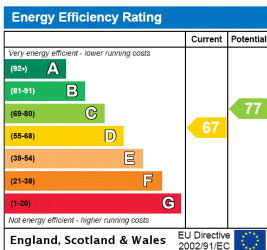
Linslade House, Whiston Road, E2
 Approx. Gross Internal Floor Area 705 sq. ft / 65.54 sq. m



All measurements of walls, doors, windows, fittings and appliances, including their size and location, are shown as standard sizes and do not constitute any warranty or representation by the seller, their agent or CP Creative. Any intending purchaser must satisfy himself by inspection or otherwise as to the correctness of the information contained in these plans. This plan is for illustrative purposes only and should be used as such by any prospective purchasers.



This floorplan is for illustration purposes only and is not to scale. The position and size of doors, windows, appliances and other features are approximate.



Hackney | 020 8986 4216 | hackney@winkworth.co.uk



winkworth.co.uk

See things differently

Winkworth wishes to inform prospective buyers and tenants that these particulars are a guide and act as information only. All our details are given in good faith and believed to be correct at the time of printing but they don't form part of an offer or contract. No Winkworth employee has authority to make or give any representation or warranty in relation to this property. All fixtures and fittings, whether fitted or not are deemed removable by the vendor unless stated otherwise and room sizes are measured between internal wall surfaces, including furnishings.