



CHEPSTOW ROAD, W2

£495,000 SHARE OF FREEHOLD (58 YEARS REMAINING)

A UNIQUE AND CHARMING ONE BEDROOM HOUSE ARRANGED OVER TWO FLOORS WITH A LARGE PRIVATE GARAGE.

1 Bedroom, 1 Reception Room, 1 Bathroom, House, Residents Parking, 474 Approx Sq Ft, Garage, Service Charge £1,000 p/a, Ground Rent N/A



Notting Hill Sales | 0207 727 3227 | nottinghill@winkworth.co.uk

winkworth.co.uk

for every step...



DESCRIPTION:

A charming and own front door property arranged as a one-bedroom house over two floors with a large private garage situated in the secure gated mews behind. The ground floor of the property offers open plan living space with kitchen and above is a bright bedroom with en suite bathroom.

LOCATION:

Chepstow Road runs north from Westbourne Grove, the house is just beyond St Stephens Gardens with two of Notting Hill's most well-known hangouts, The Cow and The Westbourne just round the corner, and with the many amenities of Westbourne Grove within easy walking distance.

LOCAL AUTHORITY AND COUNCIL TAX BAND:

City of Westminster (Band E)

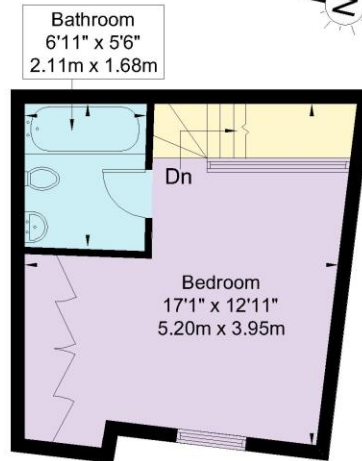
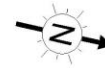


Chepstow Road, W2 5QR

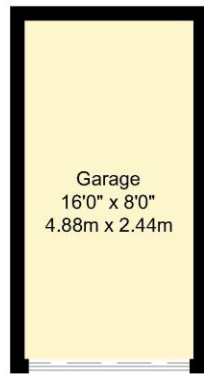
Approx Gross Internal Area = 44 sq m / 474 sq ft

Garage = 12 sq m / 129 sq ft

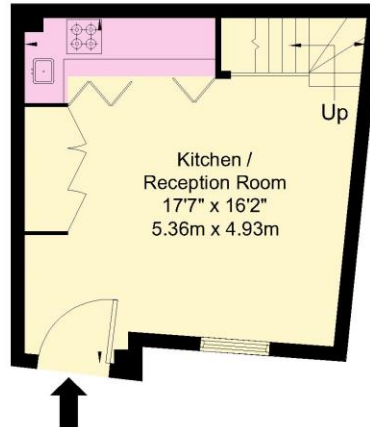
Total = 56 sq m / 602 sq ft



First Floor



Ground Floor



Ground Floor

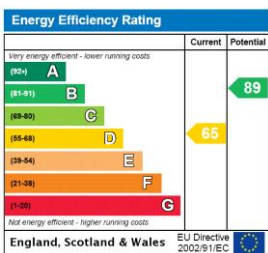
Ref:

Copyright **BLEU PLAN**

The Floor plan is not to scale and measurements and areas shown are approximate and therefore should be used for illustrative purposes only. The plan has been prepared in accordance with the RICS code of Measuring Practice and whilst we have confidence in the information produced it must not be relied on. If there is any aspect of particular importance, you should carry out or commission your own inspection of the property.

Copyright @ BLEUPLAN

This floorplan is for illustration purposes only and is not to scale. The position and size of doors, windows, appliances and other features are approximate.



Notting Hill Sales | 0207 727 3227 | nottinghill@winkworth.co.uk



winkworth.co.uk

for every step...

winkworth wishes to inform prospective buyers and tenants that these particulars are a guide and act as information only. All our details are given in good faith and believed to be correct at the time of printing but they don't form part of an offer or contract. No winkworth employee has authority to make or give any representation or warranty in relation to this property. All fixtures and fittings, whether fitted or not are deemed removable by the vendor unless stated otherwise and room sizes are measured between internal wall surfaces, including furnishings.