



**ALBION ROAD, STOKE NEWINGTON, N16**  
**£330 PER WEEK FURNISHED, PART FURNISHED, UNFURNISHED**

## **A FIRST FLOOR ONE BEDROOM APARTMENT LOCATED A SHORT STROLL TO THE POPULAR CHURCH STREET**

**Islington | 0207 354 2480 | [islington@winkworth.co.uk](mailto:islington@winkworth.co.uk)**

**Winkworth**

Tenant Fees Apply: Details of fees for tenant referencing, tenancy agreement admin fees and renewal fees are available on the Winkworth website and the link can be found with the displayed rent for the property. Tenants should ensure they are fully conversant with these upfront fees and other costs that are involved at the outset of the tenancy before making an offer to rent and your local Winkworth office will provide written details upon request.

[winkworth.co.uk](http://winkworth.co.uk)

See things differently



## DESCRIPTION:

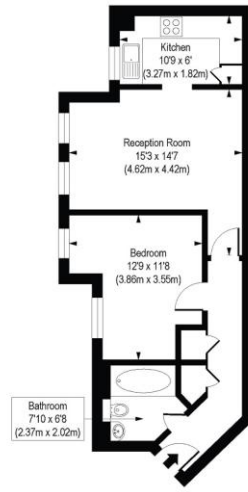
A first floor one bedroom apartment located a short stroll to the popular Church Street. The property is located in a sort after new build development close to Newington Green, and benefits from first-rate bus links to the City and West End. The property boasts a brand new kitchen, just off the reception room, a double bedroom, and modern bathroom. The flat is set in a contemporary modern development located moments from a comprehensive range of vibrant bars, shops and cosmopolitan restaurants along Stoke Newington Church Street.

**Winkworth**



**Winkworth**

Albion Road, N16  
Approx. Gross Internal Floor Area 493 sq. ft / 45.81 sq. m



First Floor

© Winkworth 2018. All rights reserved. This floor plan is for illustrative purposes only and is not to scale. The position and size of doors, windows, appliances and other features are approximate. All fixtures and fittings, whether fitted or not are deemed removable by the vendor unless stated otherwise and room sizes are measured between internal wall surfaces, including furnishings.

This floorplan is for illustration purposes only and is not to scale. The position and size of doors, windows, appliances and other features are approximate.

Islington | 0207 354 2480 | [islington@winkworth.co.uk](mailto:islington@winkworth.co.uk)

**Winkworth**

[winkworth.co.uk](http://winkworth.co.uk)

See things differently

Winkworth wishes to inform prospective buyers and tenants that these particulars are a guide and act as information only. All our details are given in good faith and believed to be correct at the time of printing but they don't form part of an offer or contract. No Winkworth employee has authority to make or give any representation or warranty in relation to this property. All fixtures and fittings, whether fitted or not are deemed removable by the vendor unless stated otherwise and room sizes are measured between internal wall surfaces, including furnishings.