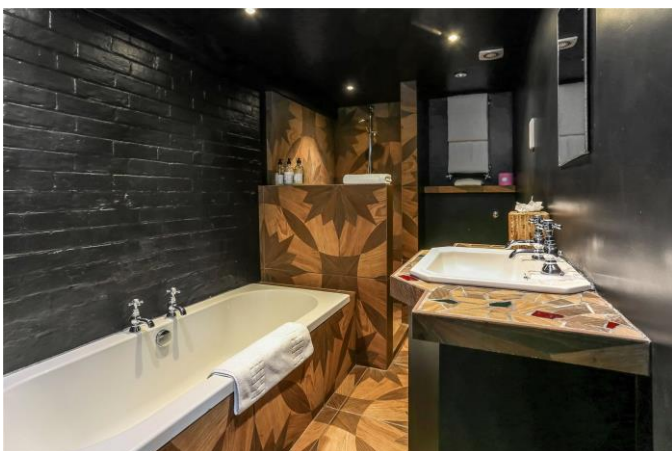




15A Parchment Street, Winchester, Hampshire, SO23 8AZ

Winkworth

15A Parchment Street, Winchester, Hampshire, SO23 8AZ



Superb and Stylish Property Close to the City Centre

This wonderful hidden gem is beautifully positioned in the heart of Winchester. The property has a rich and colourful history, variously used as a school house, a private home and as a boutique Bed and Breakfast. The house is currently used as a self-catering holiday rental, tucked away off charming Parchment Street which is just moments away from the High Street.

The property is highly individual, characterful and cleverly designed to maximise its internal space which is currently divided into three individual sitting rooms, each with bathrooms and mezzanine bedrooms which radiate from a large communal kitchen with room for dining and relaxing.

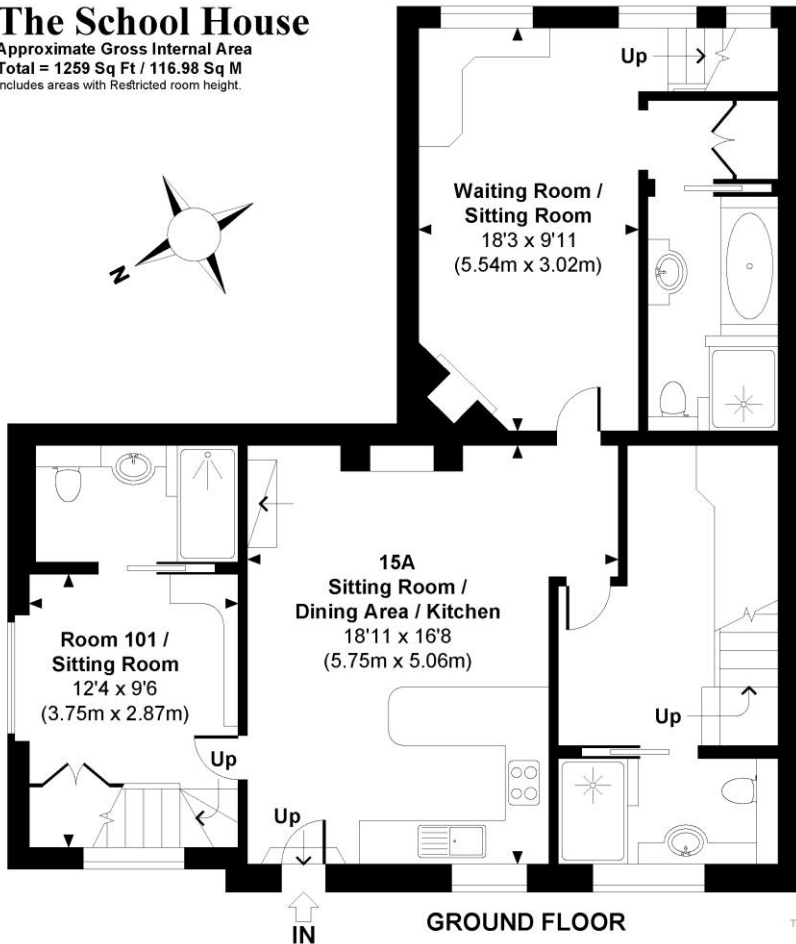
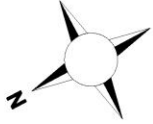
The kitchen/sitting/dining room is an inviting space with wooden floors and an impressive vaulted ceiling. An exposed brick chimney breast is a wonderful feature, and the kitchen includes a fitted oven and hob as well as space for other appliances. Each of the individual sitting rooms feature their own bedrooms on a mezzanine level above, with stylish en-suite bath or shower rooms.

Externally, the property offers that rare city-centre commodity of off-road parking, and there is a shingled, private garden alongside as well as a large storage shed. Further permit parking is available on the road.

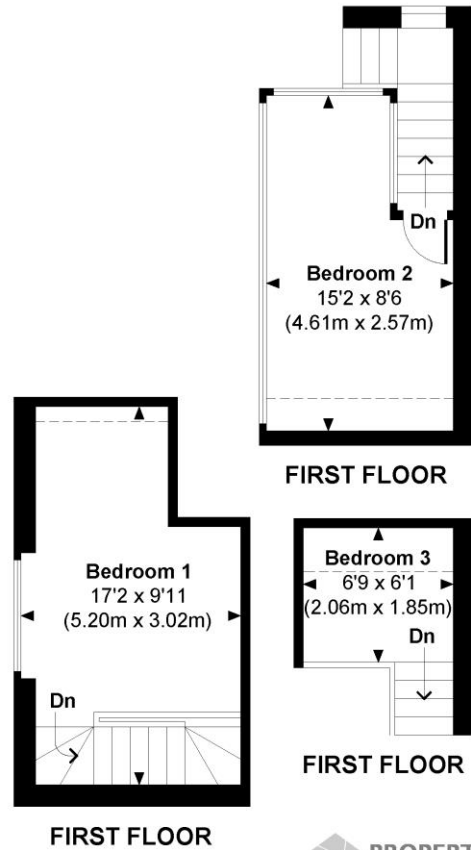


The School House

Approximate Gross Internal Area
Total = 1259 Sq Ft / 116.98 Sq M
Includes areas with Restricted room height.



Indicates restricted room height less than 1.5m.



© www.propertyfocus.co | Professional Property Photography & Floorplans

This plan is for illustrative purposes only and is not to scale. If specified, the Gross Internal Area (GIA), dimensions, North point orientation and the size and placement of features are approximate and should not be relied on as a statement of fact. No guarantee is given for the GIA and no responsibility is taken for any error, omission or misrepresentation.

15A Parchment Street, Winchester, Hampshire,
SO23 8AZ

Directions

Leaving on foot from the Winkworth office in Winchester, proceed to the end of Southgate Street and turn right onto the High Street. Follow the road round to the left onto Jewry Street and take the first right onto St Georges Street. Parchment Street is the second road on the left, and the property can be found tucked away in courtyard on the left-hand side.

Location

Parchment Street is superbly positioned for easy access to the mainline railway station (links to London Waterloo in approx 55 minutes), and city centre with its high street shops, boutiques, library, coffee shops, public houses, restaurants, theatre, cinema, museums and of course the city's historic cathedral. The property benefits from being in the St Bede and Westgate schooling catchments.

Tenure: Freehold

Services

Mains gas, electricity, water and drainage

Winchester City Council

Council tax band:

EPC rating: D

Viewings

Strictly by appointment with Winkworth Winchester Office

Winkworth.co.uk/winchester

Winkworth Winchester

2 Black Swan Buildings, Southgate Street, Winchester, SO23 9DT
01962 866 777 | winchester@winkworth.co.uk

Winkworth Country House Department

13 Charles II Street, St James's, London, SW1Y 4QU
020 7870 4878 | countryhouse@winkworth.co.uk

Winkworth

See things differently