



Winkworth



Winkworth



Winkworth

LEMSFORD COURT, HERTFORDSHIRE, WD6
£430,000 FREEHOLD

A CHAIN FREE THREE BEDROOM HOUSE IN SOUTH BOREHAMWOOD.

Borehamwood | 020 8953 8899 | borehamwood@winkworth.co.uk



DESCRIPTION:

Located in a sought after turning on the highly desirable South side of Borehamwood, close to several "Good" and "Outstanding" Ofsted rated schools, including Monksmead, Summerswood and Yavneh is this three bedroom family house.

With accommodation totalling 730 square feet, the property is offered for sale chain free and provides scope for extension subject to the usual planning consents.

Bus routes including the 292 and 107 with their services via Borehamwood Thameslink station to Edgware and Barnet respectively are located nearby.

AT A GLANCE

- 3 Bedrooms
- South Borehamwood
- Off Street Parking
- 730 Square Feet
- Gas Central Heating
- Double Glazed
- Scope To Extend (Stpp)





Approximate Gross Internal Area = 67.8 sq m / 730 sq ft

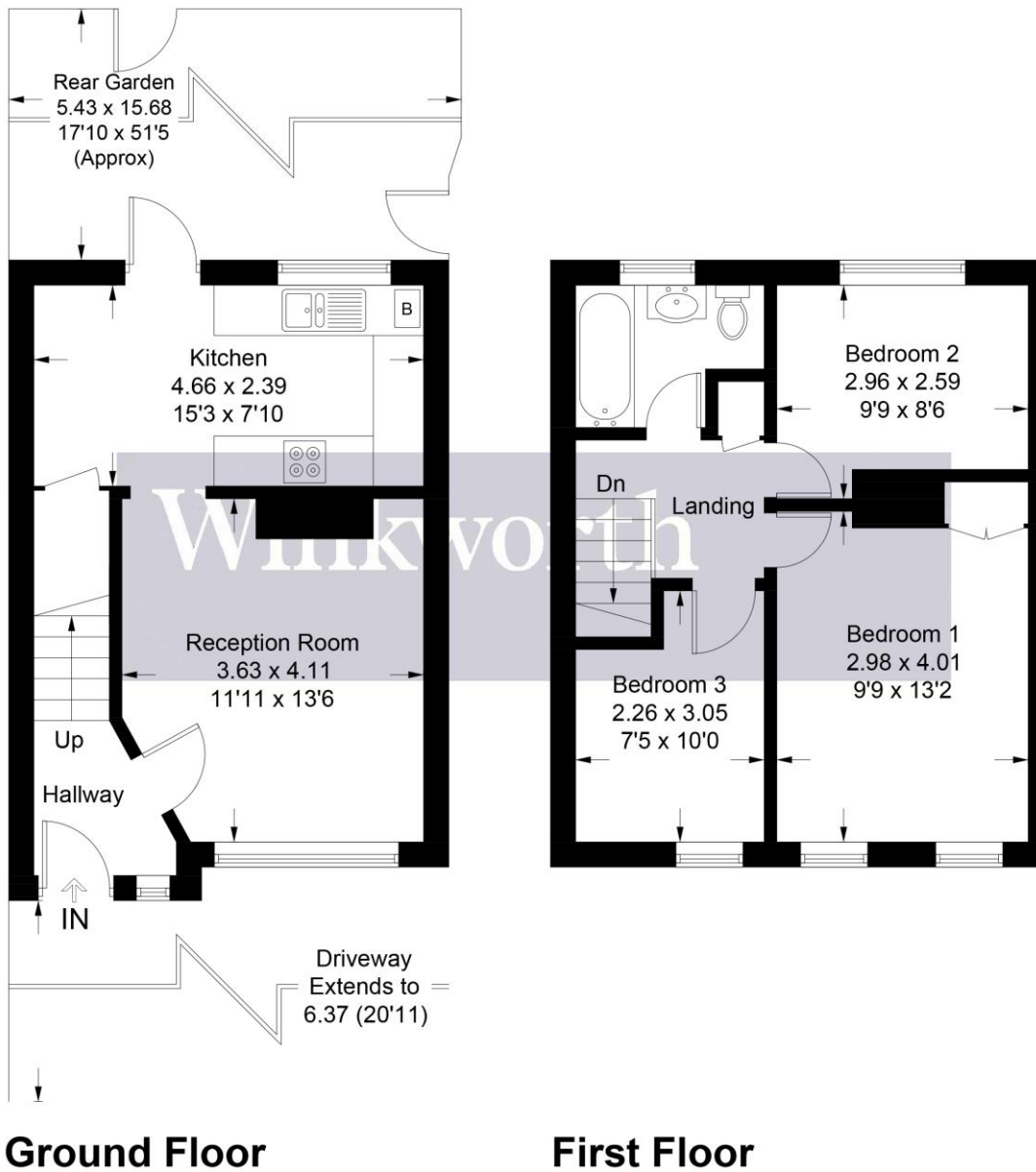
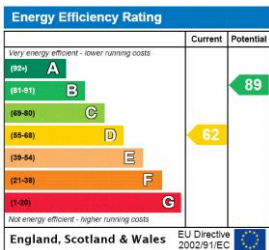


Illustration for identification purposes only, measurements are approximate, not to scale. Winkworth © 2018 (ID1122696)

This floorplan is for illustration purposes only and is not to scale. The position and size of doors, windows, appliances and other features are approximate.



Tenure: Freehold

Term: 0 year and 0 months

Service Charge: £0 per annum

Ground Rent: £ 0 Annually (subject to increase)

Council Tax Band: D

Where no figures are shown, we have been unable to ascertain the information. All figures that are shown were correct at the time of printing.