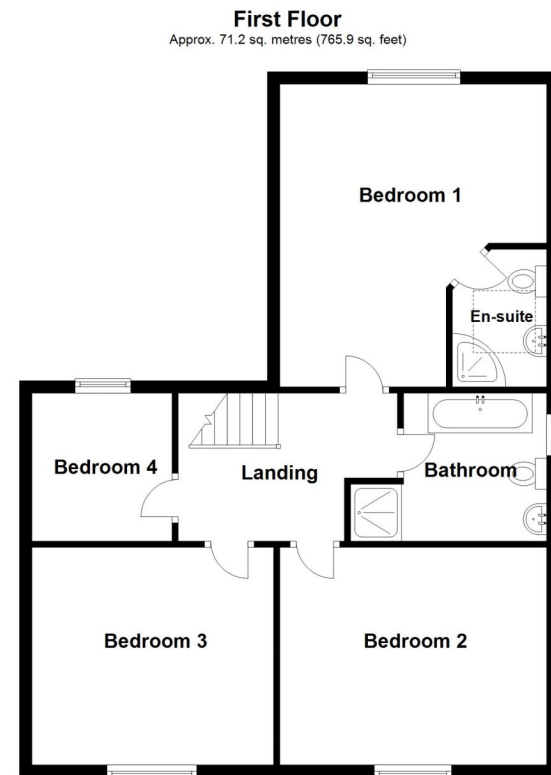
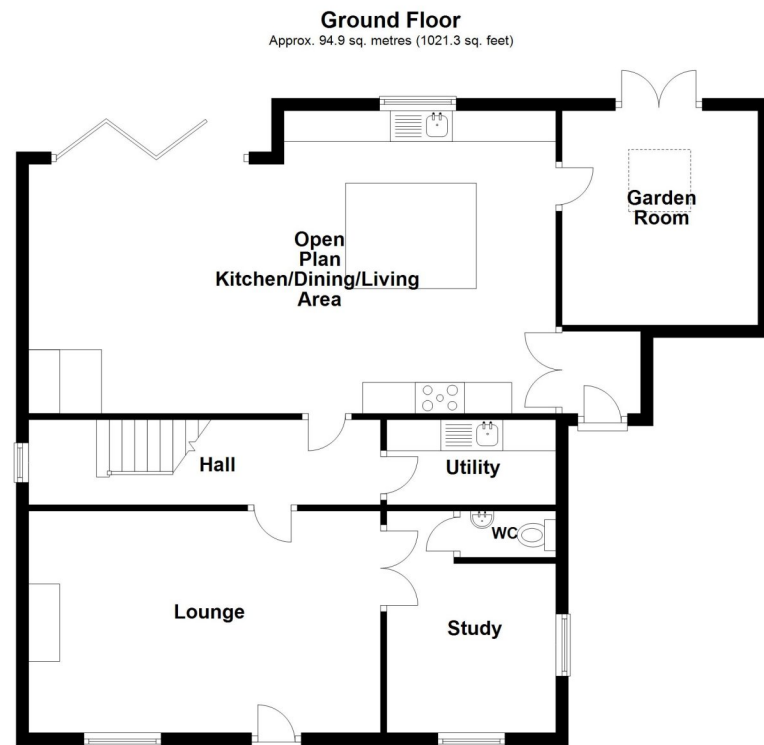


Silver Street, Branston, Lincoln

*This floorplan is for illustration purposes only and is not to scale. The position and size of doors, windows, appliances and other features are approximate.*

Energy Efficiency Rating		Current	Potential
Very energy efficient - lower running costs			
(92-)	A		82
(81-91)	B		
(69-80)	C		
(55-68)	D	68	
(39-54)	E		
(21-38)	F		
(1-20)	G		
Not energy efficient - higher running costs			
England, Scotland & Wales		EU Directive 2002/91/EC	



Total area: approx. 166.0 sq. metres (1787.2 sq. feet)



39 Silver Street, Branston, Lincoln, Lincolnshire, LN4 1LR

OFFERS OVER £500,000 Freehold

Situated in the old part of the highly popular village of Branston this stone built Four double bedroom detached home retains its period looks and charm yet has been sympathetically extended to create a wow factor open plan kitchen / dining / living room with two pairs of French doors allowing access to the private rear garden and offers a stone built two storey outbuilding to the rear with options for use as office/ work from home space or an outside hobby / games room subject to the necessary consents. It also had planning consent for conversion to single occupancy.

FOUR BEDROOM DETACHED HOME | STONE BUILT | POPULAR VILLAGE OF BRANSTON | WOW FACTOR OPEN PLAN KITCHEN LIVING AREA | TWO STOREY OUTBUILDING TO THE REAR | OFF ROAD PARKING

Winkworth Sleaford | 01529 303377 | sleaford@winkworth.co.uk

winkworth.co.uk/sleaford

Under the Property Misdescriptions Act 1991 these particulars are a guide and act as information only. All details are given in good faith and are believed to be correct at time of printing. Winkworth give no representation as to their accuracy and potential purchasers or tenants must satisfy themselves or otherwise as to their correctness. No employee of Winkworth has authority to make or give any representation or warranty in relation to this property.



See things differently.



See things differently.

## ACCOMMODATION

**Entrance lobby** - An oak entrance door leads to the entrance lobby with UPVC window to side aspect, ceramic tiled flooring and glazed double doors leading to the kitchen / dining / living room.

**Kitchen / Dining / Family Room** - 28'9" x 18'5" (8.76m x 5.61m) This is the hub of this superb home with UPVC window and two pairs of French doors leading to the garden, ceramic tiled flooring with log burner on raised tiled hearth.

The kitchen boasts a generous range of base and eye level units with quartz work surfacing over, ceramic one and a half bowl sink, dual fuel range cooker is chimney recessed fitment with canopy extractor over, central island incorporating breakfast bar with quartz work servicing and inset oak preparation board, dishwasher, wine cooler. Vertical radiator to family room and under floor central heating to kitchen.

**Dining Room** - 11'4" x 10'4" (3.45m x 3.15m) Having vaulted ceiling with velux roof light, UPVC French doors to rear aspect leading to garden making this a great room for entertaining and summer bbq's, solid wood flooring, television point and radiator with under floor central heating.

**Inner Hall** - Having stair case to 1st floor, recessed coat storage, UPVC window to side aspect, ceramic tiled flooring, radiator and under floor electric heating.

**Utility Room** - 7'6" x 5'7" (2.29m x 1.7m) Wall mounted gas fired boiler supplying central heating and hot water in airing cupboard.

Base and eye level units with contemporary work surfacing over, ceramic sink, space for washing machine and tumble dryer, ceramic tiled flooring.

**Living Room** - 18'7" x 12' (5.66m x 3.66m) Sliding sash window to front aspect, ornamental log burner in recessed fitment on flag stone hearth, wood effect flooring, television point, two radiators, coving to ceiling and double doors to study.

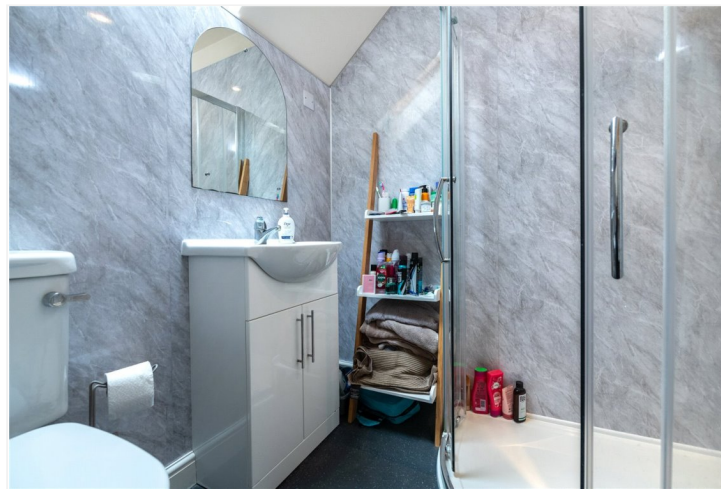
**Study** - 11'8" x 0'9" (3.56m x 0.23m) Sliding sash window to front aspect, UPVC window to side aspect, wood effect flooring, radiator.

**WC** - Fitted with a 2 piece suite comprising close coupled WC, wall mounted hand wash basin, radiator, ceramic tiled flooring.

**Landing** - Staircase rises from inner hall to 1st floor landing, wood effect flooring, loft access, coving to ceiling.

**Master Bedroom** - 17'3" x 14'3" (5.26m x 4.34m) UPVC window to rear aspect, shaped ceiling, solid wood flooring, television point, wall lights, radiator.

**En-Suite** - Having velux roof light, fitted with a 3 piece suite comprising corner shower cubicle with mains fed shower over, close coupled WC, vanity unit housing hand wash basin, heated towel rail.



**Bedroom 2** - 14'9" x 10'5" (4.5m x 3.18m) Sliding sash window to front aspect, full size loft hatch with integral ladder to boarded loft area, radiator, coving to ceiling.

**Family Bathroom** - Opaque glazed UPVC window to side aspect, fitted with a 4 piece suite comprising double ended panelled bath, separate double shower cubicle with mains fed shower over, vanity unit housing hand wash basin, close coupled WC half height wall tiling, heated towel radiator, extractor fan and coving to ceiling.

**Bedroom 3** - 12'1" x 11'8" (3.68m x 3.56m) Sliding sash window to front aspect, ornamental Adam style fireplace, wood effect flooring, radiator.

**Bedroom 4** - 8' x 7'5" (2.44m x 2.26m) UPVC window to rear aspect, radiator, coving to ceiling.

**Location** - The property is located in the old part of the highly popular village of Branston just 4 miles south of the cathedral city of Lincoln, the village boast all everyday amenities including schools, medical centre, coop supermarket, shops and takeaways. Less than 5 minutes walk to bus stops with half hourly bus services to Lincoln

Lovely countryside walks less than 3 minutes away.

**Outside** - The property is fronted by dwarf stone walling with pantiled top, the front is laid to low maintenance gravel with established shrubbery.

A 5 bar gate lead to the driveway to the side of the property with an open oak cart house style vehicle shelter measuring 16'7" x 15'1"

The rear garden offers a high degree of privacy with a large paved patio and seating area, shaped lawn and established shrub and flower borders with gated side access.

Two storey stone out building 19'8" x 7'8" the ground floor is currently used as storage/workshop and the 1st floor has most recently been and outdoor entertaining area with stone and brick external stairs.

There are outside lights, power point, and tap.

## LOCAL AUTHORITY

North Kesteven District Council

## TENURE

Freehold

## COUNCIL TAX BAND

E