



ASHWORTH MANSIONS, MAIDA VALE, LONDON, W9 £1,350,000 SHARE OF FREEHOLD

A larger than average, well-appointed three-bedroom garden apartment forming part of one of the most desirable blocks in Maida Vale. The property retains some attractive features including high ceilings, an open plan kitchen-living space with a separate utility area, reception room with bay fronted windows, three double bedrooms with the principal bedroom benefitting from an en-suite shower room, a family bathroom and direct access to the well-manicured communal gardens. Ashworth Mansions has recently undergone a programme of works to upgrade the exterior of the block and is ideally located near the ever-popular Paddington Recreation Ground. It is also situated only a short distance from Maida Vale tube station (0.15 miles, Bakerloo line) and the shops and cafes on Elgin Avenue.

Primary Bedroom With En-Suite Bathroom | Two Further Double Bedrooms | Family Bathroom | Open Plan Kitchen/Reception Room | Reception Room | Access To Communal Gardens | Share Of Freehold

Winkworth

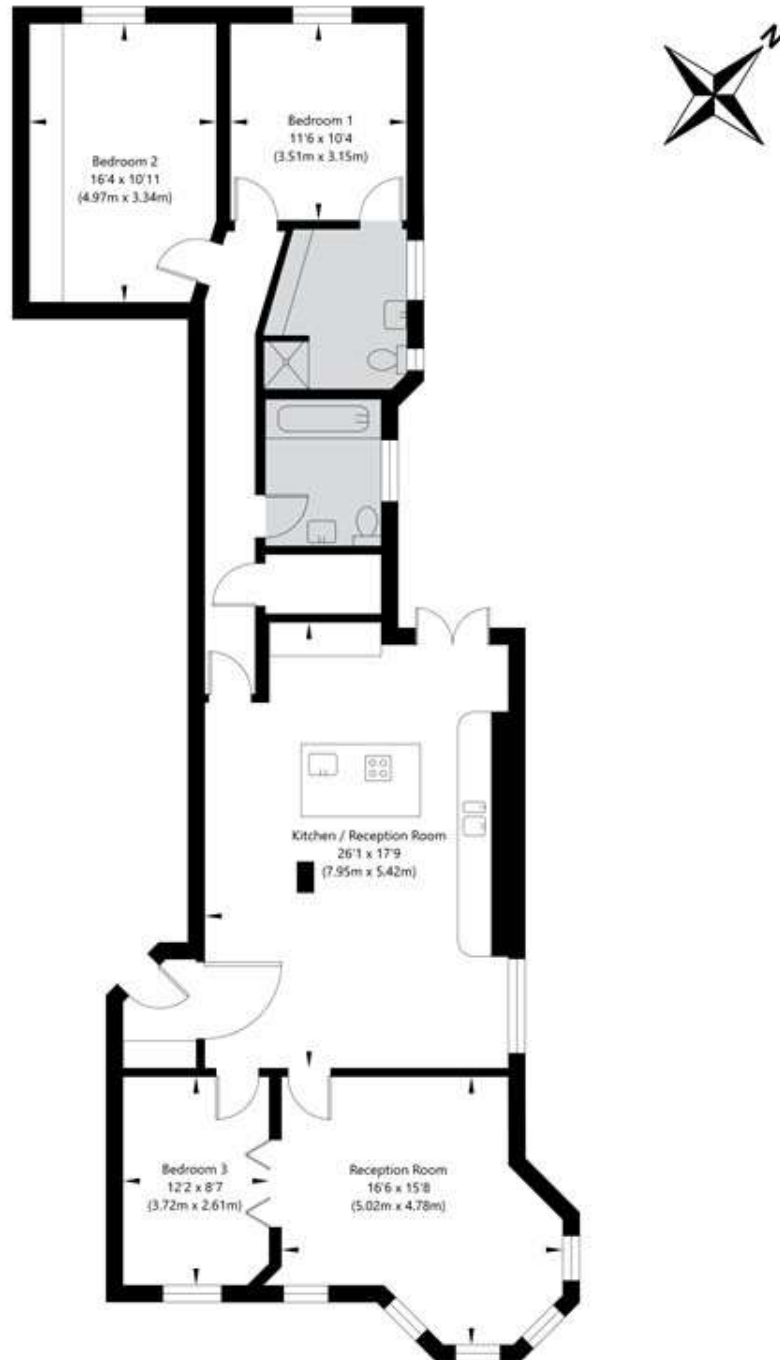
for every step...

[winkworth.co.uk/maida-vale](https://www.winkworth.co.uk/maida-vale)



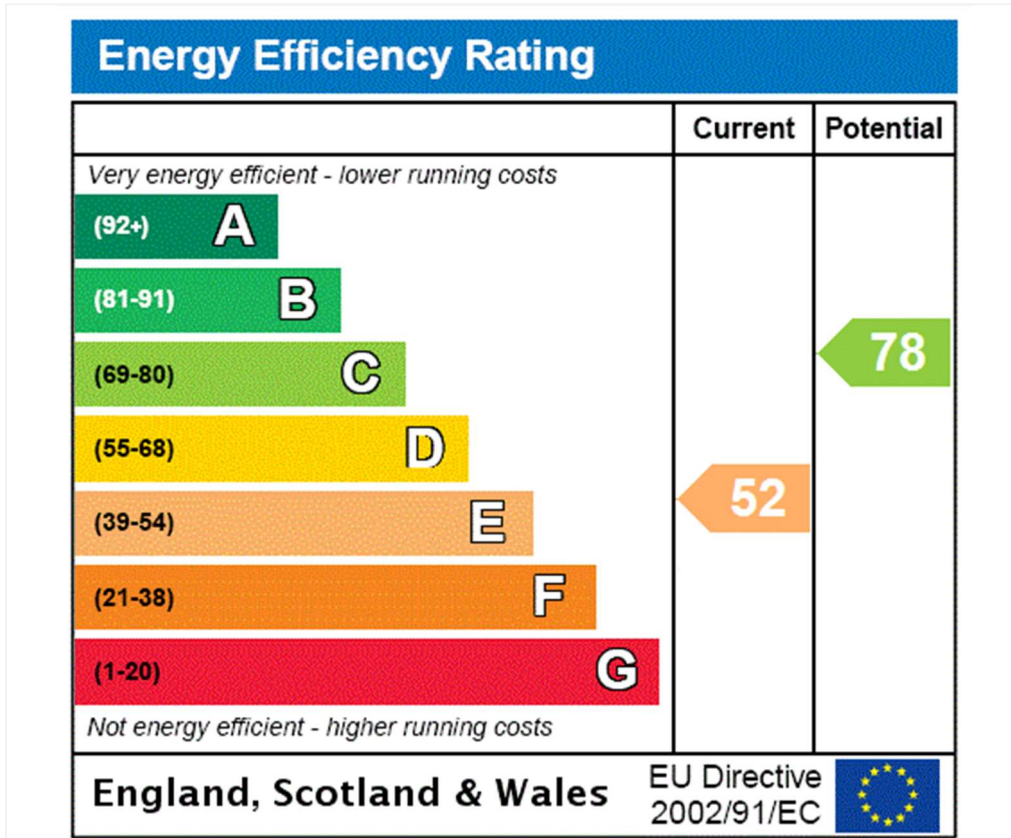
Ashworth Mansions, Elgin Avenue, London W9 1JP

Lower Ground Floor
GROSS INTERNAL FLOOR AREA
APPROX. 127.55 SQ M / 1373 SQ FT



APPROXIMATE GROSS INTERNAL FLOOR AREA 127.55 SQ M / 1373 SQ FT
THIS FLOOR PLAN IS FOR ILLUSTRATIVE PURPOSES ONLY AND
SHOULD BE USED FOR THIS PURPOSE BY PROSPECTIVE APPLICANTS AS ITS NOT TO SCALE.

(c) AMBERSHORE PIX LIMITED / PHOTO - VIDEO - FLOOR PLANS / 0800 999 1577 / WWW.AMERSHOREPIX.CO.UK



Tenure: Share of Freehold

Term: Expires - 24/06/3000

Service Charge: £4,810 per annum

Reserve Fund: £4,310 per annum

Ground Rent: £ 400 Annually (subject to increase)

Council Tax Band: G

Where no figures are shown, we have been unable to ascertain the information. All figures that are shown were correct at the time of printing.

Where no figures are shown, we have been unable to ascertain the information. All figures that are shown were correct at the time of printing. These particulars are not an offer or contract, nor part of one. You should not rely on statements by Winkworth in the particulars or by word of mouth or in writing "information" as being factually accurate about the property, its condition or its value. Winkworth does not have any authority to make any representations about the property, and accordingly any information given is entirely without responsibility on the part of the agents, seller(s) or lessor(s). These particulars are prepared on the basis of the information supplied by our client and are a rough guide for information only. The photographs show only certain parts of the property. We are not able to check all of the information and therefore are unable to guarantee accuracy. All interested parties are therefore advised to undertake all necessary inspections and checks that they deem appropriate. Where displayed, the square footage is taken from the floor plans, which are created by an independent supplier. These measurements are approximate and included for illustrative purposes only. The measurements may vary. Winkworth does not make any representation as to the accuracy of these measurements and you should seek to verify them for yourself. Winkworth accept no liability for any loss you may suffer if you rely on these measurements. All fixtures and fittings, whether fitted or not are deemed removable by the vendor unless stated. Any reference to alterations to, or use of, any part of the property does not mean that any necessary planning, building regulations or other consent has been obtained. Amenities and appliances have not been tested

Maida Vale | 211-213 Sutherland Avenue, London, W9 1RU | 020 7289 1692 |



for every step...

winkworth.co.uk/maida-vale

Winkworth wishes to inform prospective buyers and tenants that these particulars are a guide and act as information only. All our details are given in good faith and believed to be correct at the time of printing but they don't form part of an offer or contract. No Winkworth employee has authority to make or give any representation or warranty in relation to this property. All fixtures and fittings, whether fitted or not are deemed removable by the vendor unless stated otherwise and room sizes are measured between internal wall surfaces, including furnishings.