



EAST DULWICH GROVE, EAST DULWICH, SE22  
£1,650,000 FREEHOLD

**A FREEHOLD OPPORTUNITY CONSISTING OF  
FOUR FLATS, SITUATED IN A PRIME  
LOCATION IN SE22.**

Dulwich | 020 8299 2722 | [dulwich@winkworth.co.uk](mailto:dulwich@winkworth.co.uk)

**Winkworth**

*winkworth.co.uk*

See things differently



## DESCRIPTION:

A freehold opportunity consisting of four flats, all currently tenanted achieving a good return situated in a prime location in SE22. The property offers on the ground floor two separate one bedroom garden flats. On the first floor a two-bedroom flat and on the top floor a split level two-bedroom flat. The freehold is offered in its entirety and the leases on the flat haven't been divided. The opportunity is ideal for a landlord looking to take on an existing established portfolio. It can also be redeveloped back to its former glory or even sold off individually post sale once the tenancies have ended.

Current rental incomes include:

- Flat 1 (one bedroom garden flat) £1,350
- Flat 2 (one bedroom garden flat) £1,200
- Flat 3 (two bedroom, no garden) £1,500
- Flat 4 (two bedroom, no garden) £1,200

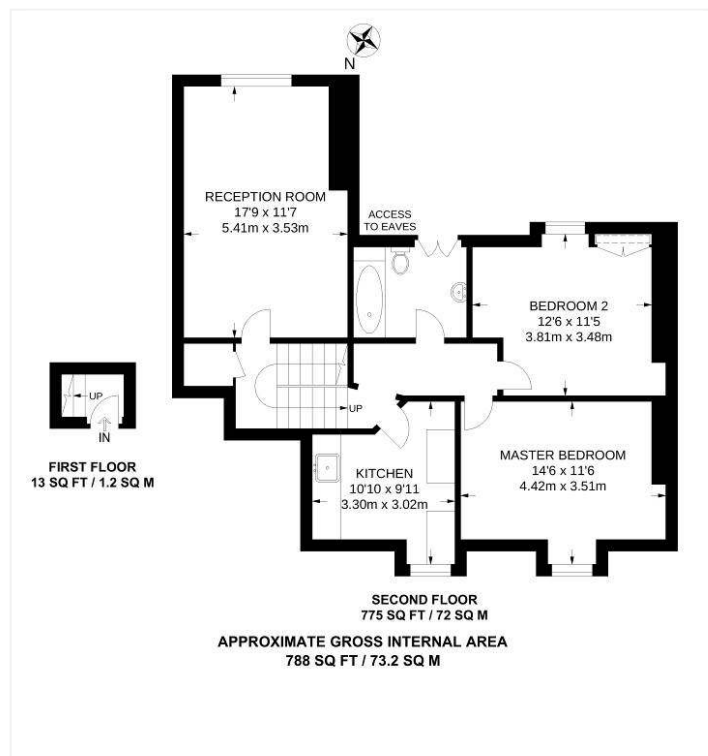
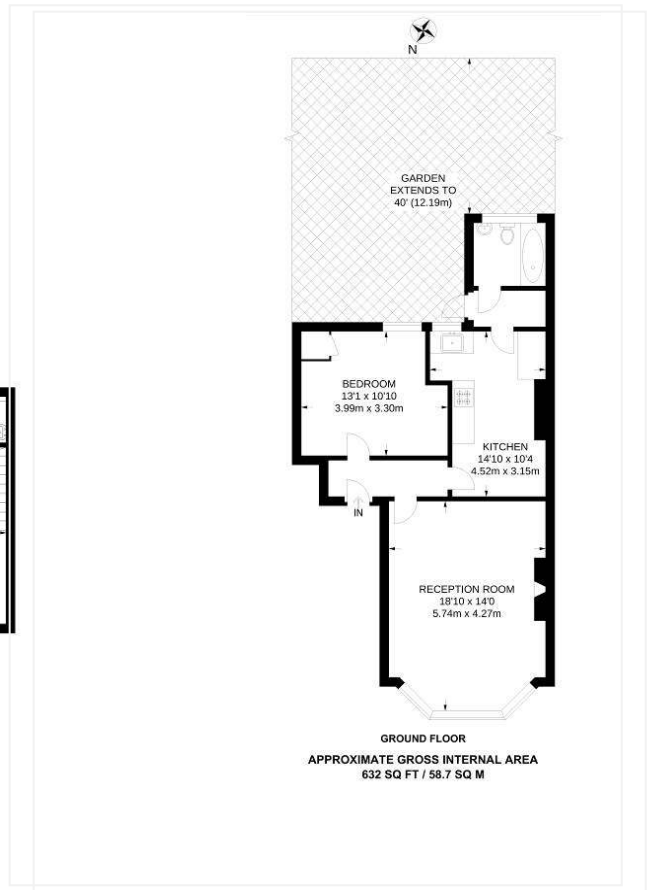
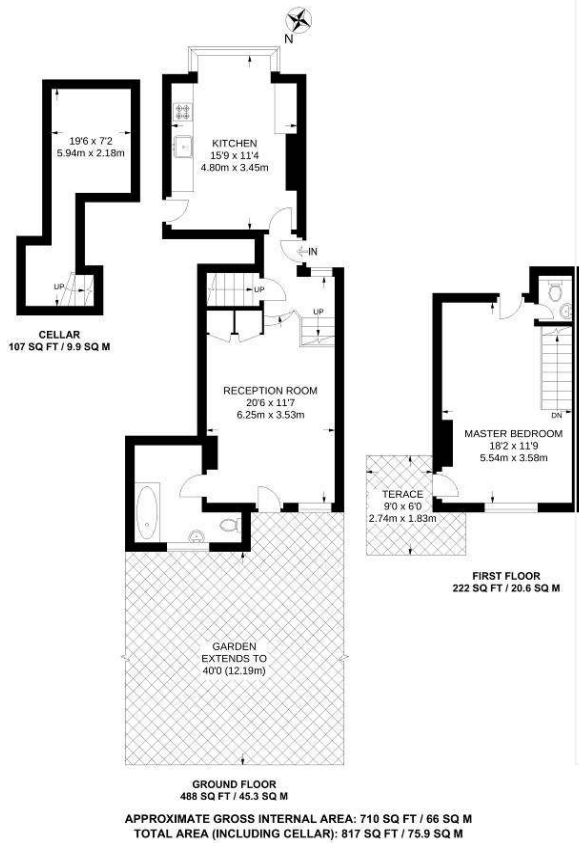
## AT A GLANCE

- Freehold Opportunity
- Four Flats
- Central Location









This floorplan is for illustration purposes only and is not to scale. The position and size of doors, windows, appliances and other features are approximate.

Dulwich | 020 8299 2722 | [dulwich@winkworth.co.uk](mailto:dulwich@winkworth.co.uk)

**Winkworth**

[winkworth.co.uk](http://winkworth.co.uk)

See things differently

Winkworth wishes to inform prospective buyers and tenants that these particulars are a guide and act as information only. All our details are given in good faith and believed to be correct at the time of printing but they don't form part of an offer or contract. No Winkworth employee has authority to make or give any representation or warranty in relation to this property. All fixtures and fittings, whether fitted or not are deemed removable by the vendor unless stated otherwise and room sizes are measured between internal wall surfaces, including furnishings.