



RAILTON ROAD, SE24

£2,950 PER MONTH FURNISHED, PART FURNISHED, UNFURNISHED

A THREE DOUBLE BEDROOM VICTORIAN CONVERSION FLAT IN THE HEART OF HERNE HILL

Herne Hill | 0207 501 8950 | hernehill@winkworth.co.uk

Winkworth

for every step...

winkworth.co.uk



DESCRIPTION:

Available exclusively through Winkworth we are delighted to present this large three-bedroom Victorian conversion apartment. The property briefly comprises of a spacious reception, a modern fitted eat-in kitchen with plenty of wall and base units for storage and is equipped with the usual appliances. There are three double bedrooms (two with fitted storage/ wardrobes), all benefitting from masses of natural light from the large, double-glazed windows. The bathroom is located in the middle of the floor and there is a separate shower located just off the kitchen, both benefitting from modern fixtures and fittings with a wash hand basin and a WC. Available from the 06th of January on a flexible furnishing basis, this property will have an HMO License in place, making it perfect for up to three sharers ONLY.

AT A GLANCE

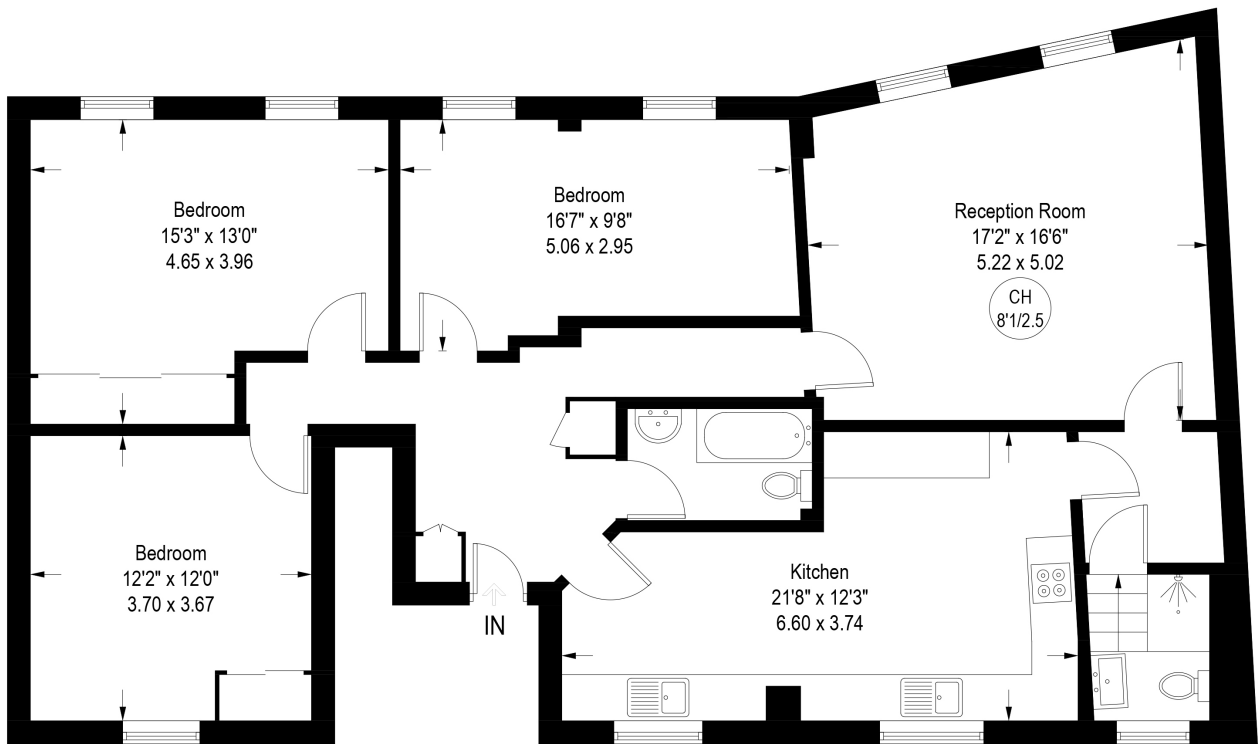
- Victorian Conversion (First Floor)
- Three Double Bedrooms
- Spacious Reception Room
- Modern Eat-in Kitchen
- Bathroom
- Shower Room
- Flexible Furnishing
- Available from the 06th of January 2024
- Lambeth Council Tax Band: D
- HMO License for up to 3 sharers ONLY





Railton Road, London, SE24

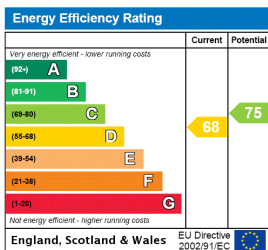
Approximate Gross Internal Area = 1231 sq ft / 114.4 sq m



First Floor

Illustration for identification purposes only, measurements are approximate, not to scale. (ID1035104)

This floorplan is for illustration purposes only and is not to scale. The position and size of doors, windows, appliances and other features are approximate.



Herne Hill | 0207 501 8950 | hernehill@winkworth.co.uk



for every step...

winkworth.co.uk

Winkworth wishes to inform prospective buyers and tenants that these particulars are a guide and act as information only. All our details are given in good faith and believed to be correct at the time of printing but they don't form part of an offer or contract. No Winkworth employee has authority to make or give any representation or warranty in relation to this property. All fixtures and fittings, whether fitted or not are deemed removable by the vendor unless stated otherwise and room sizes are measured between internal wall surfaces, including furnishings.