



HANBURY STREET, LONDON, E1
£500,000 TO BE ADVISED

A STUNNING ONE BEDROOM APARTMENT WITH PLENTY OF EXPOSED BRICK AND LARGE PRIVATE TERRACE

Shoreditch | 020 7749 7650 | shoreditch@winkworth.co.uk





DESCRIPTION:

A beautiful one bedroom apartment that boasts a large private terrace, an abundance of exposed brick and also use of the large communal terrace that has stunning views of the City.

This stylish apartment has a spacious reception room with french doors which lead to the terrace, ultra-modern open-plan kitchen, double bedroom and ensuite shower room.

The property is located within a desirable building in the heart of Spitalfields just off Brick Lane and is only a few minutes' walk from Aldgate East, Shoreditch High Street and Whitechapel stations. The property is offered furnished or unfurnished and is ideal for a professional that needs quick access to the City and excellent local amenities.

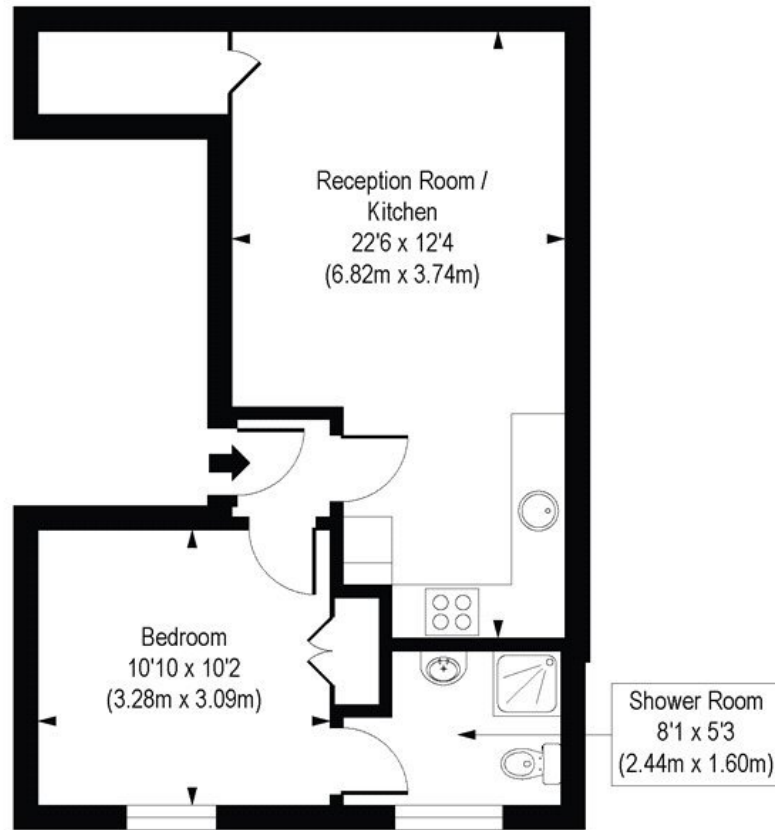
Winkworth



Winkworth

Hanbury Street, E1

Approx. Gross Internal Floor Area 444 sq. ft / 41.21 sq. m



Third Floor

COMPLIANT WITH RICS CODE OF MEASURING PRACTICE. Floorplan is for illustrative purposes only and is not to scale. Every attempt has been made to ensure the accuracy of the floorplan shown, however all measurements, fixtures, fittings and data shown are an approximate interpretation for illustrative purposes only. Liability for errors, omissions or mis-statement through negligence or otherwise is hereby excluded.

This floorplan is for illustration purposes only and is not to scale. The position and size of doors, windows, appliances and other features are approximate.

Shoreditch | 020 7749 7650 | shoreditch@winkworth.co.uk

Winkworth

winkworth.co.uk

See things differently

Winkworth wishes to inform prospective buyers and tenants that these particulars are a guide and act as information only. All our details are given in good faith and believed to be correct at the time of printing but they don't form part of an offer or contract. No Winkworth employee has authority to make or give any representation or warranty in relation to this property. All fixtures and fittings, whether fitted or not are deemed removable by the vendor unless stated otherwise and room sizes are measured between internal wall surfaces, including furnishings.