



## MERIDEN COURT, LONDON, SW3 £600,000 SHARE OF FREEHOLD

### DESCRIPTION:

A smartly refurbished one bedroom flat located in this prestigious portered development in the heart of Chelsea, just off the Kings Road.

With a lift, a porter and wonderful views, the flat will make an excellent pied-a-terre or rental investment in a superb location.

Knightsbridge & Chelsea | 0207 589 6616 | [knightsbridge@winkworth.co.uk](mailto:knightsbridge@winkworth.co.uk)

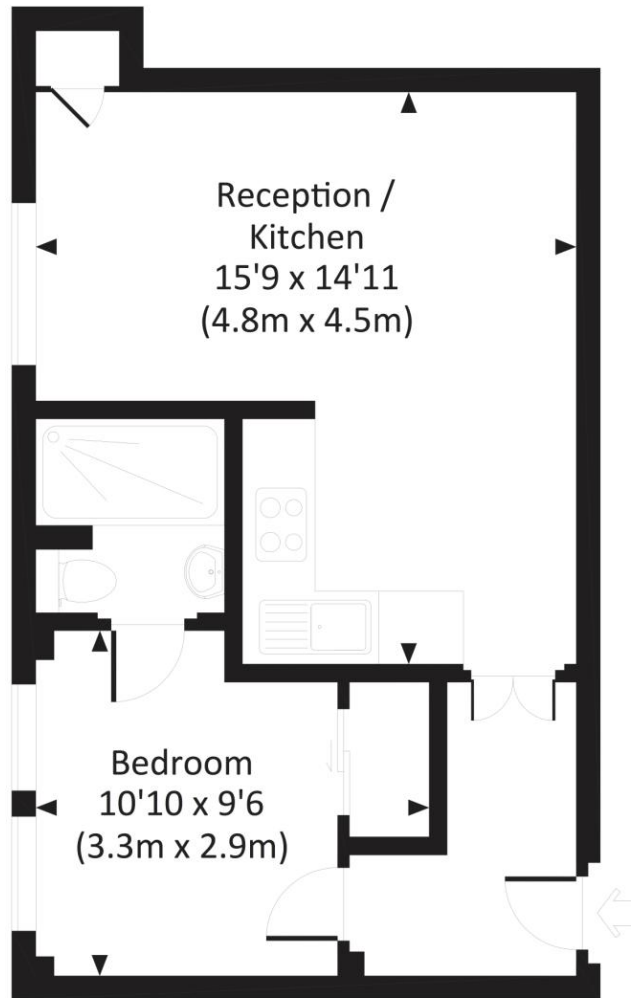
**Winkworth**

for every step...

[winkworth.co.uk](http://winkworth.co.uk)

# CHELSEA MANOR STREET, SW3

Approx. gross internal area  
366 Sq.Ft. / 34.0 Sq.M.



## FIRST FLOOR



All measurements have been made in accordance with RICS Code of Measuring Practice which are approximate only and only for illustrative purposes. For the avoidance of doubt, Dowling Jones Design shall not be liable for any reliance on these measurements. © 2015 www.dowlingjones.com 020 7610 9933

This floorplan is for illustration purposes only and is not to scale. The position and size of doors, windows, appliances and other features are approximate.

For more details visit: <https://www.winkworth.co.uk/sale/property/KBR200009>

Energy Efficiency Rating	
Current	Potential
Very energy efficient - lower running costs	
(92+) A	
(81-91) B	
(69-80) C	
(55-68) D	
(39-54) E	
(21-38) F	
(1-20) G	
Not energy efficient - higher running costs	
73	81

England, Scotland & Wales EU Directive 2002/91/EC



**Tenure:** Share of Freehold  
**Term: Expires:** 23 December 2122  
**Service Charge:** £6,356 per annum  
**Ground Rent:** Peppercorn  
**Council Tax Band:** D

Where no figures are shown, we have been unable to ascertain the information. All figures that are shown were correct at the time of printing.

Knightsbridge & Chelsea | 0207 589 6616 | [knightsbridge@winkworth.co.uk](mailto:knightsbridge@winkworth.co.uk)

# Winkworth

for every step...

[winkworth.co.uk](http://winkworth.co.uk)

Winkworth wishes to inform prospective buyers and tenants that these particulars are a guide and act as information only. All our details are given in good faith and believed to be correct at the time of printing but they don't form part of an offer or contract. No Winkworth employee has authority to make or give any representation or warranty in relation to this property. All fixtures and fittings, whether fitted or not are deemed removable by the vendor unless stated otherwise and room sizes are measured between internal wall surfaces, including furnishings.