



## MORETON PLACE, UK, SW1V

£675,000

SHARE OF FREEHOLD

### At a glance...

- Bright reception
- Two Bedrooms
- Fitted Kitchen
- Ground floor
- Family bathroom
- Quiet residential road

**Winkworth**

for every step...



Energy Efficiency Rating		
	Current	Potential
Very energy efficient - lower running costs		
(92+) <b>A</b>		
(81-91) <b>B</b>		
(69-80) <b>C</b>		78
(55-68) <b>D</b>	67	
(39-54) <b>E</b>		
(21-38) <b>F</b>		
(1-20) <b>G</b>		
Not energy efficient - higher running costs		
England, Scotland & Wales	EU Directive 2002/91/EC	

## MORETON PLACE, UK, SW1V

£675,000

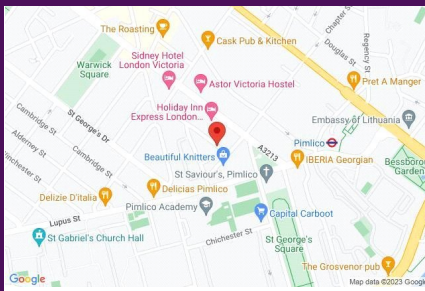
SHARE OF FREEHOLD

A well-presented and extremely bright, two-bedroom ground floor apartment situated in the highly desirable 'Moreton Triangle'.

Accommodation comprises a generous reception room, a modern fitted kitchen, two double bedrooms and a smart family bathroom.

Moreton Place is located within the desirable 'Moreton Triangle' and offers convenient access to the local amenities of Pimlico and Victoria and the green open spaces of St George's Square. The smart boutiques and restaurants of Pimlico Road, Sloane Square and Elizabeth Street are also close by.

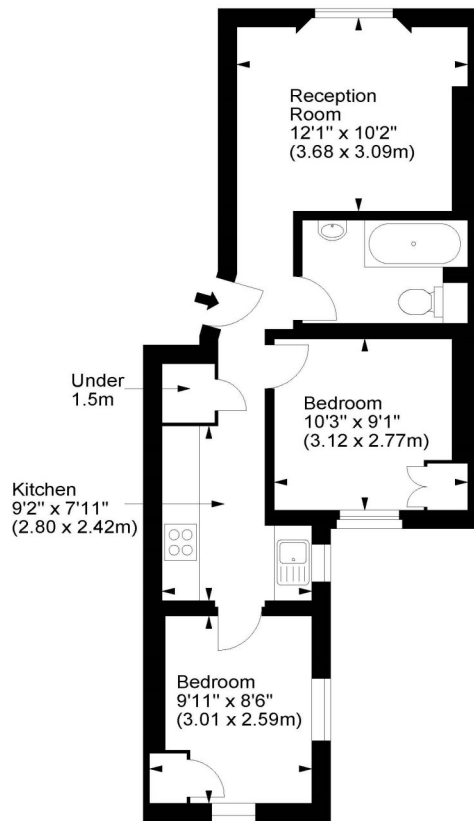
Public transport is well catered for and can be found nearby at Pimlico Underground Station and Victoria with its plethora of options.



winkworth wishes to inform prospective buyers and tenants that these particulars are a guide and act as information only. All our details are given in good faith and believed to be correct at the time of printing but they don't form part of an offer or contract. No Winkworth employee has authority to make or give any representation or warranty in relation to this property. All fixtures and fittings, whether fitted or not are deemed removable by the vendor unless stated otherwise and room sizes are measured between internal wall surfaces, including fireplaces.

### Moreton Place, SW1

Approx. Gross Internal Area  
465 Sq Ft - 43.20 Sq M



Ground Floor

For illustration purposes only. Not to scale.  
All measurements are taken and shown at floor level.  
www.r3photography.co.uk © Photography / Floor Plans / Lease Plans / EPCs



Pimlico & Westminster

020 7828 1786

pimlico@winkworth.co.uk

winkworth.co.uk/pimlico-westminster

**Winkworth**

for every step...