



APPOLD COURT, GODFREY PLACE, LONDON, E2
£550,000 LEASEHOLD

A STUNNING FOURTH FLOOR ONE BEDROOM APARTMENT WITH PRIVATE BALCONY

Shoreditch | 020 7749 7650 | shoreditch@winkworth.co.uk

Winkworth

winkworth.co.uk

See things differently



DESCRIPTION:

A superb 543sqft apartment set on the 4th floor of a secure development with lift, bike storages, video entry system and CCTV. Featuring an open plan living space with laminate floors, plenty of natural light beaming through large windows, balcony with a non-restricted view, fully integrated kitchen (dishwasher, washing machine), spacious double bedroom with fitted wardrobe and ample storage space, luxury bathroom suite and underfloor heating throughout. The property also benefits from triple glazed windows and is fitted with a mechanical ventilation system with heat recovery, designed to contribute to good indoor air quality.

Fantastic location on a quiet street, yet with all that Shoreditch has to offer on your doorstep including BoxPark, Columbia Road, Spitalfields Market and an incredible array of trendy bars and eateries.

Shoreditch High Street, Old St. and Liverpool Street stations provide swift and easy access into the City and West End.

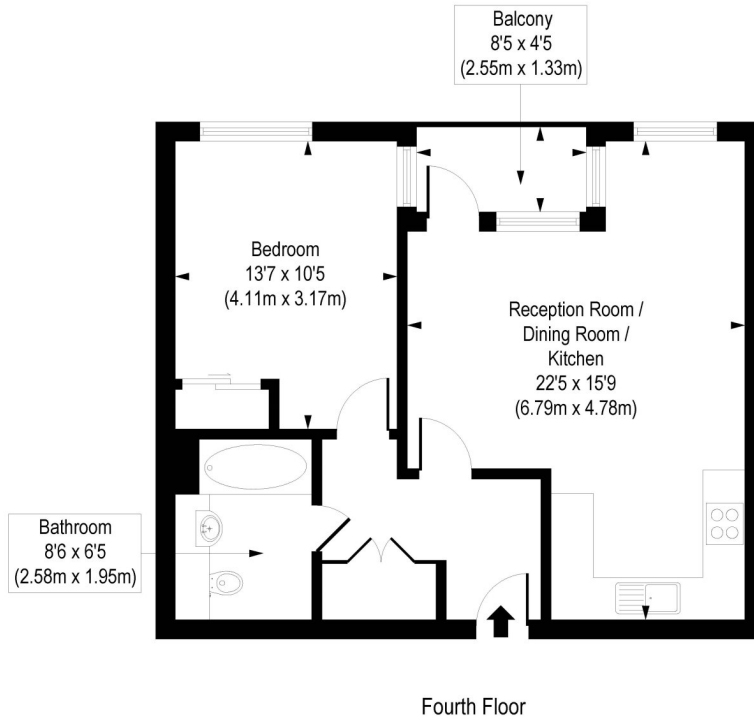
Winkworth



Winkworth

Godfrey Place, E2

Approx. Gross Internal Floor Area 557 sq. ft / 51.79 sq. m



Fourth Floor

COMPLIANT WITH RICS CODE OF MEASURING PRACTICE. Floorplan is for illustrative purposes only and is not to scale. Every attempt has been made to ensure the accuracy of the floorplan shown, however all measurements, fixtures, fittings and data shown are an approximate interpretation for illustrative purposes only. Liability for errors, omissions or mis-statement through negligence or otherwise is hereby excluded.

This floorplan is for illustration purposes only and is not to scale. The position and size of doors, windows, appliances and other features are approximate.

Shoreditch | 020 7749 7650 | shoreditch@winkworth.co.uk

Winkworth

winkworth.co.uk

See things differently

Winkworth wishes to inform prospective buyers and tenants that these particulars are a guide and act as information only. All our details are given in good faith and believed to be correct at the time of printing but they don't form part of an offer or contract. No Winkworth employee has authority to make or give any representation or warranty in relation to this property. All fixtures and fittings, whether fitted or not are deemed removable by the vendor unless stated otherwise and room sizes are measured between internal wall surfaces, including furnishings.