



RANDOLPH AVENUE, W9 £575,000 SOLE AGENT Subject to contract

An opportunity to purchase a well-proportioned bright one bedroom second floor apartment (with a lift) forming part of an impressive converted period stucco fronted house. The property is located in the heart of this fashionable area adjacent to the famous Regents Canal and retains many attractive features including high ceilings, full-length sash windows and access to a large roof terrace. Randolph Avenue is located within walking distance of shops, cafes in Clifton and the Underground at Warwick Avenue (Bakerloo line).

Double Bedroom | Shower Room | Open Plan Kitchen/Reception Room | Terrace | Share Of Freehold

winkworth.co.uk/maidavale

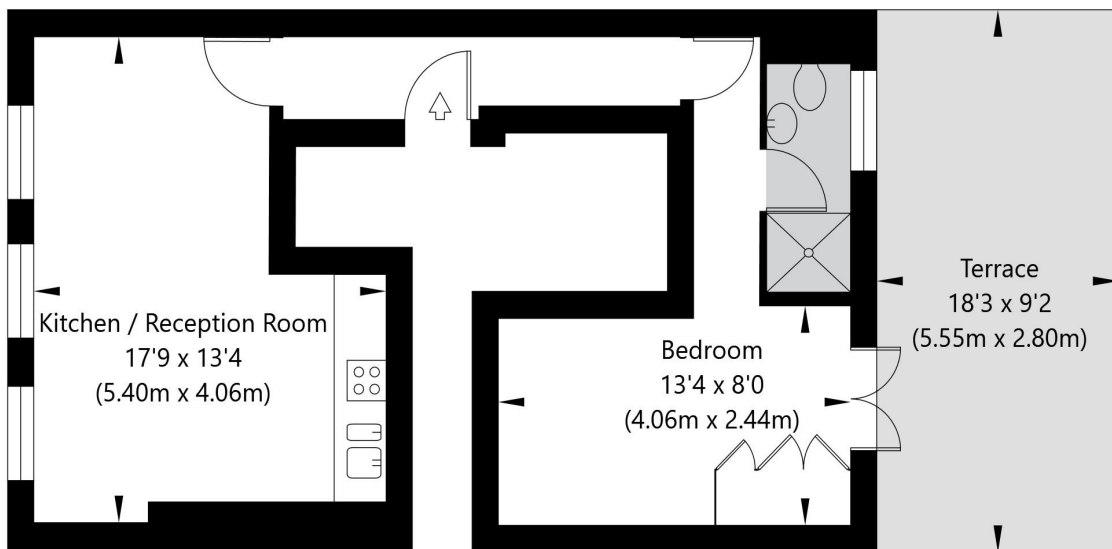
Winkworth

incorporating
Vickers



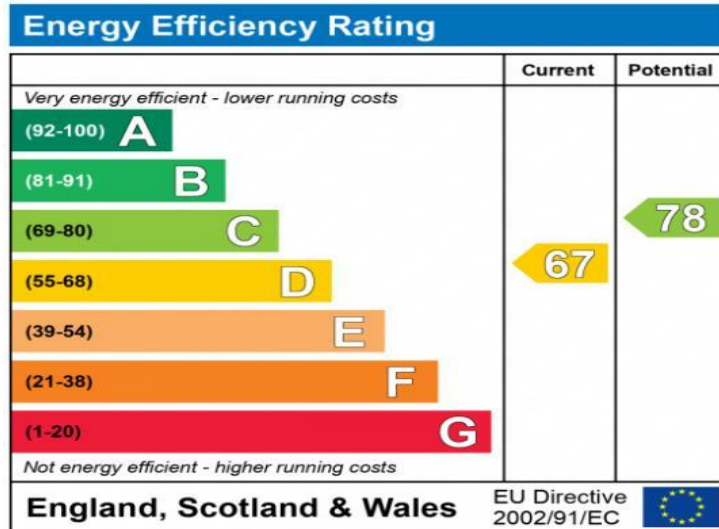
Randolph Avenue, London, W9 1BH

Second Floor
GROSS INTERNAL FLOOR AREA
APPROX. 37.5 SQ M / 404 SQ FT



APPROXIMATE GROSS INTERNAL FLOOR AREA 37.5 SQ M / 404 SQ FT
THIS FLOOR PLAN IS FOR ILLUSTRATIVE PURPOSES ONLY AND
SHOULD BE USED FOR THIS PURPOSE BY PROSPECTIVE APPLICANTS AS ITS NOT TO SCALE.

(c) AMBERSHORE PIX LIMITED / PHOTO - VIDEO - FLOOR PLANS / 0800 999 1577 / WWW.AMBERSHOREPIX.CO.UK



The energy efficiency rating is a measure of the overall efficiency of a home. The higher the rating the more energy efficient the home is and the lower the fuel bills will be.

Tenure: Share of Freehold
Term: 125 years from 29/09/1987
Service Charge: Approx. £5,300 per annum
Current Ground Rent: £100.00 Annually
 (Subject to increase)

NOTES:

Where no figures are shown, we have been unable to ascertain the information. All figures that are shown were correct at the time of printing.

NB: These particulars are not an offer or contract, nor part of one. You should not rely on statements by Winkworth in the particulars or by word of mouth or in writing "information" as being factually accurate about the property, its condition or its value. Neither Winkworth nor any joint agent has any authority to make any representations about the property, and accordingly any information given is entirely without responsibility on the part of the agents, seller(s) or lessor(s). These particulars are prepared on the basis of the information supplied by our client and are a rough guide for information only. The photographs show only certain parts of the property. We are not able to check all of the information and therefore are unable to guarantee accuracy. All interested parties are therefore advised to undertake all necessary inspections and checks that they deem appropriate. Where displayed, the square footage is taken from the floor plans, which are created by an independent supplier. These measurements are approximate and included for illustrative purposes only. The measurements may vary. Winkworth does not make any representation as to the accuracy of these measurements and you should seek to verify them for yourself. Winkworth accept no liability for any loss you may suffer if you rely on these measurements. All fixtures and fittings, whether fitted or not are deemed removable by the vendor unless stated. Any reference to alterations to, or use of, any part of the property does not mean that any necessary planning, building regulations or other consent has been obtained. Amenities and appliances have not been tested.

Maida Vale | 211-213 Sutherland Avenue, Little Venice, London W9 1RU
 020 7289 1692 | maidavale@winkworth.co.uk

winkworth.co.uk/maida-vale



Proprietors: FINEBASE W9 Limited trading as Winkworth
 Registered office: 103-104 St John's Wood Terrace, London NW8 6PL
 Registered in England No 12007773