



STUART TOWER, W9 £550,000 LEASEHOLD

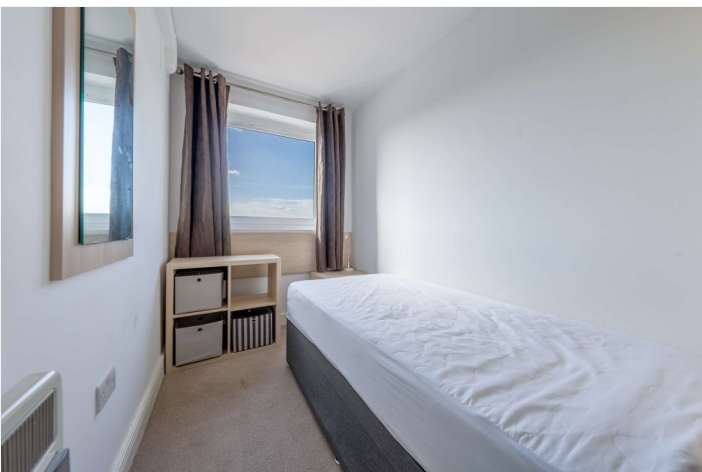
Offered in excellent decorative order, this well-proportioned fourth floor, two-bedroom apartment (located to the rear of the building) forming part of this well-known popular modern purpose-built block, with three lifts and 24-hour portorage. Stuart Tower is situated within close distance of the Regent's Canal (0.3 miles), local shops, cafes on Clifton Road and the Underground at Warwick Avenue (Bakerloo line - 0.4 miles). Access to the motorway network is within a few minutes reach, as is Paddington main line station (1.1 miles) with the added advantage of the high-speed link to London's Heathrow Airport.

Double Bedroom | Second Bedroom | Bathroom | Open Plan Kitchen/Reception Room | Balcony | Passenger Lift | Portorage | Leasehold

Winkworth

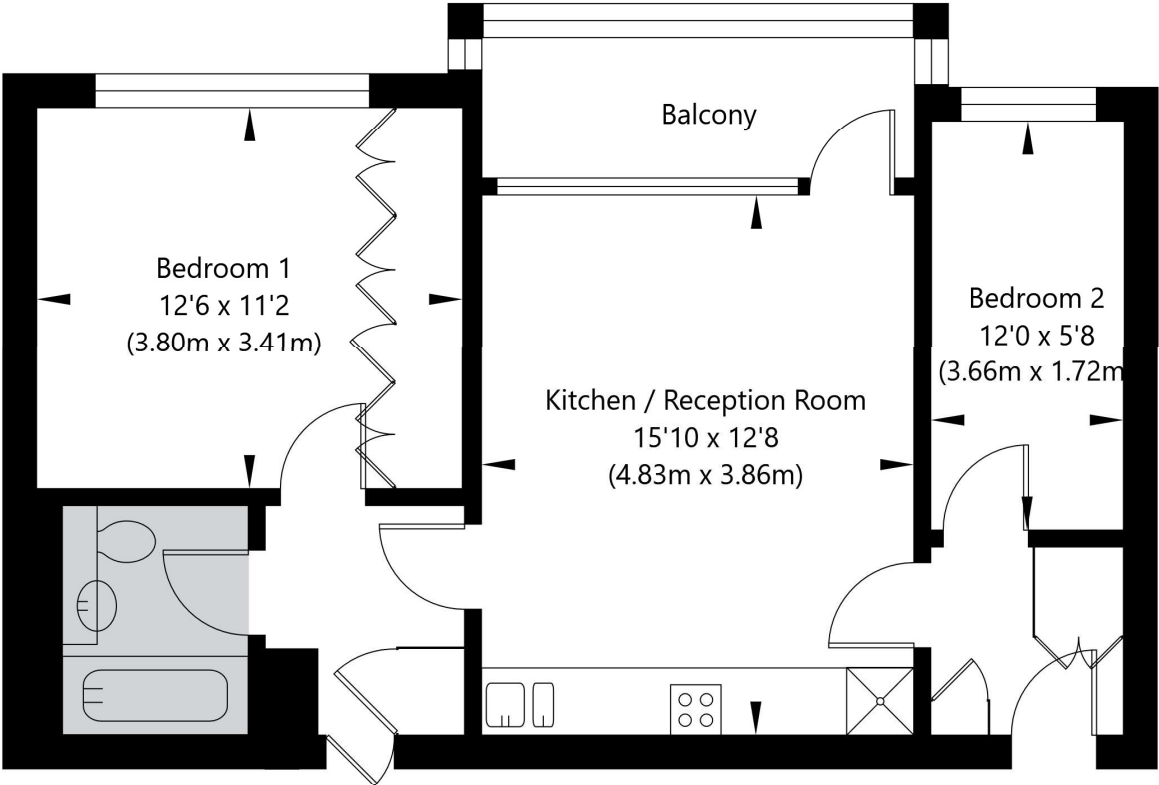
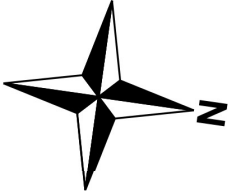
for every step...

winkworth.co.uk/maida-vale

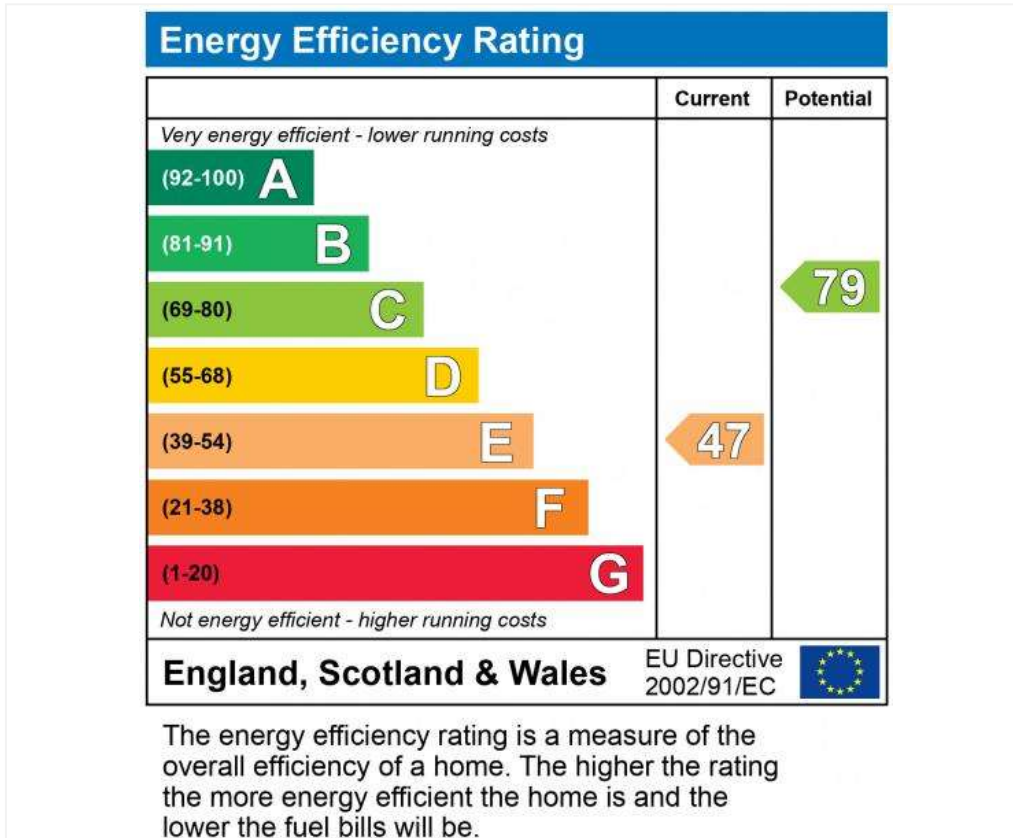


Stuart Tower, 105 Maida Vale, London, W9 1UE

Fourth Floor
GROSS INTERNAL FLOOR AREA
APPROX. 50.47 SQ M / 543 SQ FT



APPROXIMATE GROSS INTERNAL FLOOR AREA 50.47 SQ M / 543 SQ FT
THIS FLOOR PLAN IS FOR ILLUSTRATIVE PURPOSES ONLY AND
SHOULD BE USED FOR THIS PURPOSE BY PROSPECTIVE APPLICANTS AS ITS NOT TO SCALE.



Tenure: Leasehold

Term: Expires - 24/06/2980

Service Charge: £3,700 per annum

Ground Rent: A peppercorn (subject to increase)

Council Tax Band: D

Where no figures are shown, we have been unable to ascertain the information. All figures that are shown were correct at the time of printing.

Where no figures are shown, we have been unable to ascertain the information. All figures that are shown were correct at the time of printing. These particulars are not an offer or contract, nor part of one. You should not rely on statements by Winkworth in the particulars or by word of mouth or in writing "information" as being factually accurate about the property, its condition or its value. Winkworth does not have any authority to make any representations about the property, and accordingly any information given is entirely without responsibility on the part of the agents, seller(s) or lessor(s). These particulars are prepared on the basis of the information supplied by our client and are a rough guide for information only. The photographs show only certain parts of the property. We are not able to check all of the information and therefore are unable to guarantee accuracy. All interested parties are therefore advised to undertake all necessary inspections and checks that they deem appropriate. Where displayed, the square footage is taken from the floor plans, which are created by an independent supplier. These measurements are approximate and included for illustrative purposes only. The measurements may vary. Winkworth does not make any representation as to the accuracy of these measurements and you should seek to verify them for yourself. Winkworth accept no liability for any loss you may suffer if you rely on these measurements. All fixtures and fittings, whether fitted or not are deemed removable by the vendor unless stated. Any reference to alterations to, or use of, any part of the property does not mean that any necessary planning, building regulations or other consent has been obtained. Amenities and appliances have not been tested

Maida Vale | 211-213 Sutherland Avenue, London, W9 1RU | 020 7289 1692 |



for every step...

winkworth.co.uk/maida-vale

Winkworth wishes to inform prospective buyers and tenants that these particulars are a guide and act as information only. All our details are given in good faith and believed to be correct at the time of printing but they don't form part of an offer or contract. No Winkworth employee has authority to make or give any representation or warranty in relation to this property. All fixtures and fittings, whether fitted or not are deemed removable by the vendor unless stated otherwise and room sizes are measured between internal wall surfaces, including furnishings.