



**ARLINGTON LODGE, MONUMENT HILL, WEYBRIDGE, SURREY, KT13**  
**£325,000 LEASEHOLD**

**A BRIGHT 2 BEDROOM FIRST FLOOR FLAT CLOSE  
TO WEYBRIDGE TOWN CENTRE WITH GARAGE**

**Weybridge** | 01932 854400 | [weybridge@winkworth.co.uk](mailto:weybridge@winkworth.co.uk)





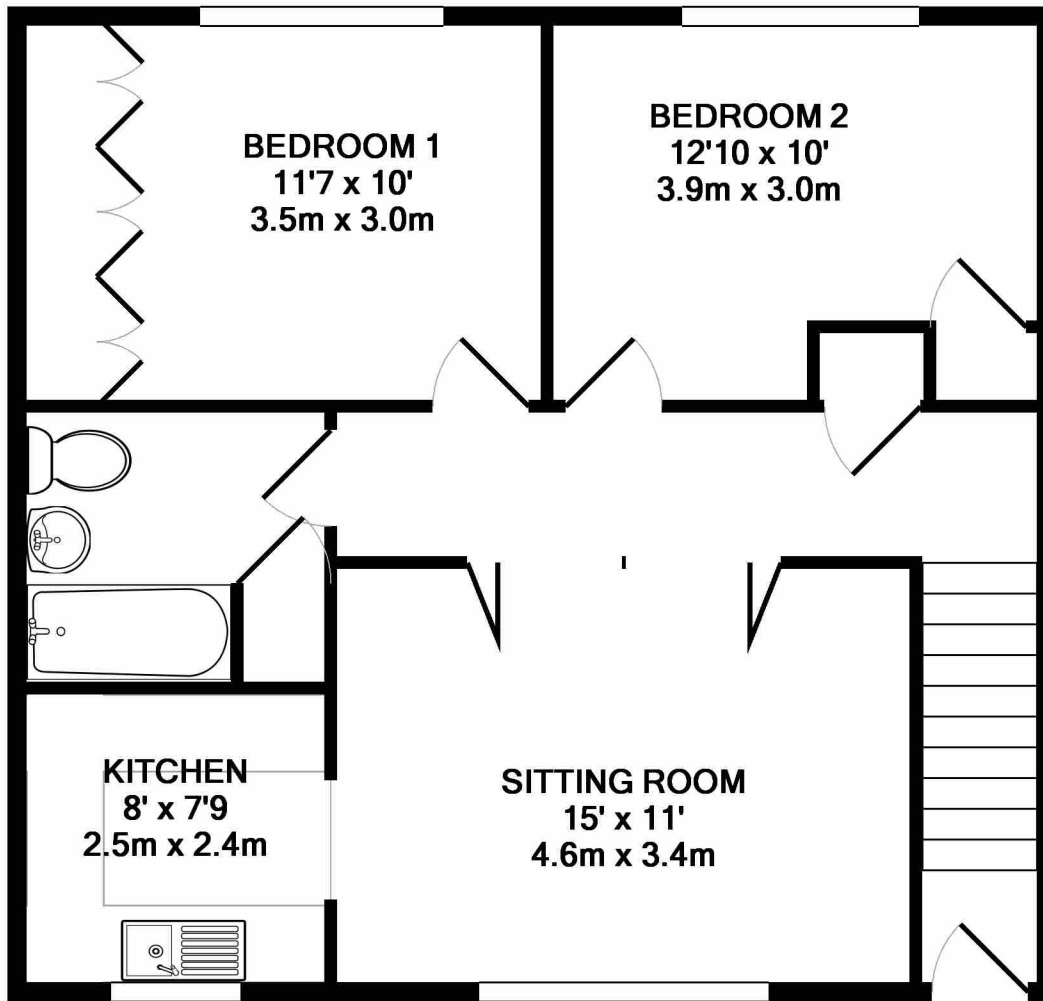
**DESCRIPTION:**

A bright and spacious 2 double bedroom first floor apartment with its own entrance and stone's throw away from Weybridge town centre. Arlington Lodge is a small and well maintained private estate with a lovely communal garden and single garage. EPC C.







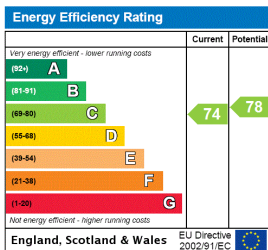


TOTAL APPROX. FLOOR AREA 659 SQ.FT. (61.2 SQ.M.)

Whilst every attempt has been made to ensure the accuracy of the floor plan contained here, measurements of doors, windows, rooms and any other items are approximate and no responsibility is taken for any error, omission, or mis-statement. This plan is for illustrative purposes only and should be used as such by any prospective purchaser. The services, systems and appliances shown have not been tested and no guarantee as to their operability or efficiency can be given

Made with Metropix ©2017

This floorplan is for illustration purposes only and is not to scale. The position and size of doors, windows, appliances and other features are approximate.



**Tenure:** Leasehold

**Term:** Expires -

**Service Charge:** £1686.74 per annum

**Ground Rent:** £ 100 Annually (subject to increase)

**Council Tax Band:** C

Where no figures are shown, we have been unable to ascertain the information. All figures that are shown were correct at the time of printing.