



## 1 Redfinch Mews Thatcham, RG19 4QJ

**A beautifully presented two bedroom home, decorated to the highest of standards, with driveway parking for multiple vehicles and an electric car charging point, south facing garden and two bathrooms.**

As you enter the property, you're greeted with an open hallway and the kitchen to your right. The kitchen is very modern with white cabinets and marble effect worktops. The kitchen also has under cabinet and kickboard lighting. There are several integrated appliances - fridge/freezer, dishwasher and washing machine.

There is a cloakroom across the hall, fitted with the same style as the kitchen.

The dual aspect living room has fantastic French doors with garden views, flooding the room with natural light. There is also an understairs cupboard for extra storage.

To the first floor are two double bedrooms. The master benefits from two fitted mirrored wardrobes and an ensuite. The ensuite has been recently decorated with smart Gray tiles, heated towel rail and a waterfall shower. The family bathroom has a shower over the bath, heated towel rail and lighter tiling than the ensuite.

To the rear is a brilliant sized south facing garden, benefitting from side access. There is a wraparound patio, housing multiple seating areas with the rest of the garden is mainly laid to lawn.

To the front of the property is an easy to maintain front garden and driveway parking for multiple vehicles with an electric car charging point.



**Winkworth**

## AT A GLANCE

Kitchen  
Living/Dining Room  
Cloakroom  
Two Double Bedrooms  
Master with Ensuite  
Built in Wardrobes  
South Facing Rear Garden  
Driveway Parking  
Electric Car Charging Point

## UTILITIES

The property is connected to all mains and operates on gas central heating. There is Ultrafast Broadband available in the area and there are no known mobile coverage issues.

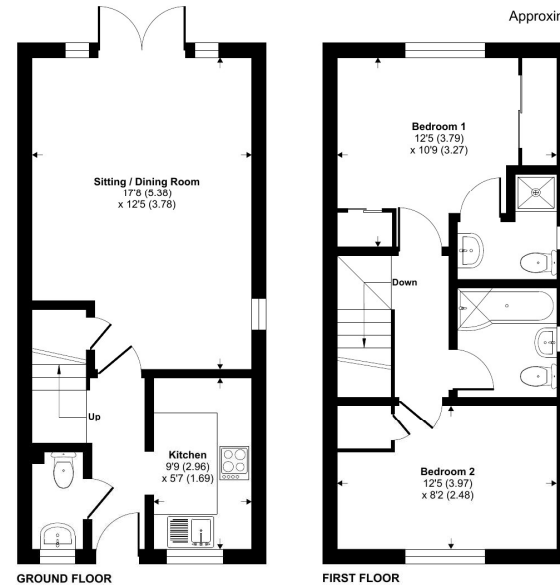
West Berkshire Council Tax Band - C  
EPC – C

## SITUATION

Located in the heart of Thatcham, this property has excellent links to Newbury town and with the train station, you can easily get to both Reading and London Paddington.

## DIRECTIONS

WhatThreeWords/// twig.soil.rats



## Redfinch Mews, Thatcham, RG19

Approximate Area = 690 sq ft / 64.1 sq m  
For identification only - Not to scale

Floor plan produced in accordance with RICS Property Measurement Standards incorporating International Property Measurement Standards (IPMS2 Residential). © nrichcom 2024. Produced for Winkworth. REF: 1162385



## Newbury Office

43 Northbrook Street, Newbury, Berkshire RG14 1DT  
01635 552552 | [newbury@winkworth.co.uk](mailto:newbury@winkworth.co.uk)

[winkworth.co.uk/newbury](http://winkworth.co.uk/newbury)

# Winkworth

See things differently.