



CONIFERS, KT13
£4,500 PER MONTH

A WONDERFUL 6 BEDROOM HOUSE IN A VERY POPULAR ROAD.

Weybridge | 01932 854400 | weybridge@winkworth.co.uk

Winkworth

for every step...

winkworth.co.uk



DESCRIPTION:

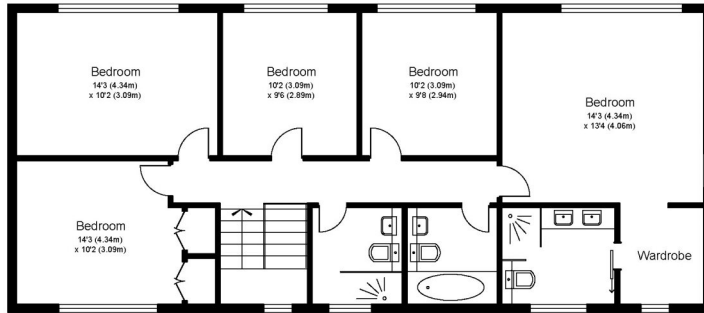
A large 6 bedroom family house with 4 bathrooms and 3 reception rooms. The house boasts a large rear garden and a double integral garage and driveway. The property is ideally situated a stone throw from Cleves school and walking distance to Walton train station.

ACCOMMODATION

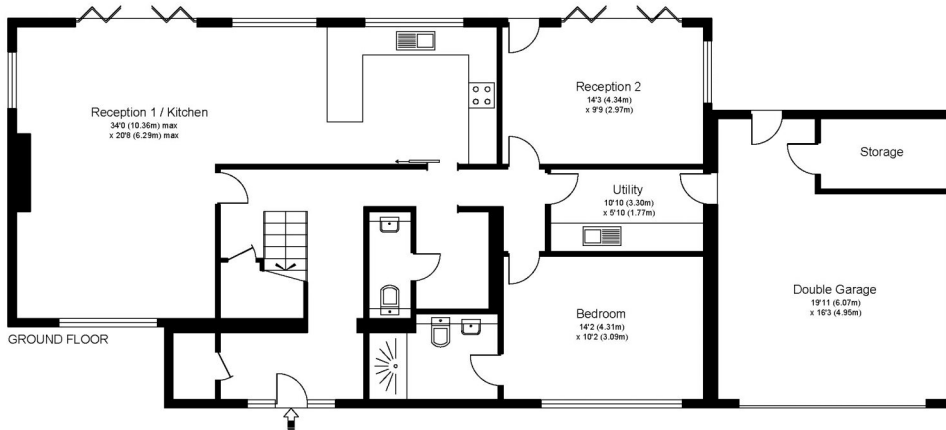
- Long Let, Minimum term 12 months
- 6 Bedrooms, 3 Reception Rooms, 4 Bathrooms
- Detached house
- Garden
- Double Garage



CONIFERS KT13



FIRST FLOOR

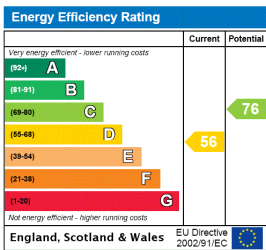


GROUND FLOOR

Approximate Gross Internal Floor Area: 200 m sq / 2147 sq ft
 Garage Area: 30 m sq / 326 sq ft
Total Area : 230 m sq / 2473 sq ft

Whilst every attempt has been made to ensure the accuracy of the floor plan contained here, measurements of doors, windows and rooms are approximate and no responsibility is taken for any error, omission or misstatements. These plans are not to scale and are for representation purposes only as defined by RICS Code of Measuring Practice and should be used as such by any prospective purchaser. Specifically no guarantee is given on total square footage of the property if quoted on this plan. Any figure given is for initial guidance only and should not be relied on as a basis of valuation.

This floorplan is for illustration purposes only and is not to scale. The position and size of doors, windows, appliances and other features are approximate.



Weybridge | 01932 854400 | weybridge@winkworth.co.uk



for every step...

winkworth.co.uk

Winkworth wishes to inform prospective buyers and tenants that these particulars are a guide and act as information only. All our details are given in good faith and believed to be correct at the time of printing but they don't form part of an offer or contract. No Winkworth employee has authority to make or give any representation or warranty in relation to this property. All fixtures and fittings, whether fitted or not are deemed removable by the vendor unless stated otherwise and room sizes are measured between internal wall surfaces, including furnishings.