

CAMBRIDGE GARDENS, W10
£5,995 PER MONTH

STUNNING MODERNISED FOUR BEDROOM MAISONETTE WITH PRIVATE GARDEN

North Kensington | 020 7792 5000 | northkensington@winkworth.co.uk

Winkworth

for every step...

winkworth.co.uk



DESCRIPTION: Stunning modernised four-bedroom maisonette on a well-located tree lined residential street in Ladbroke Grove Notting Hill.

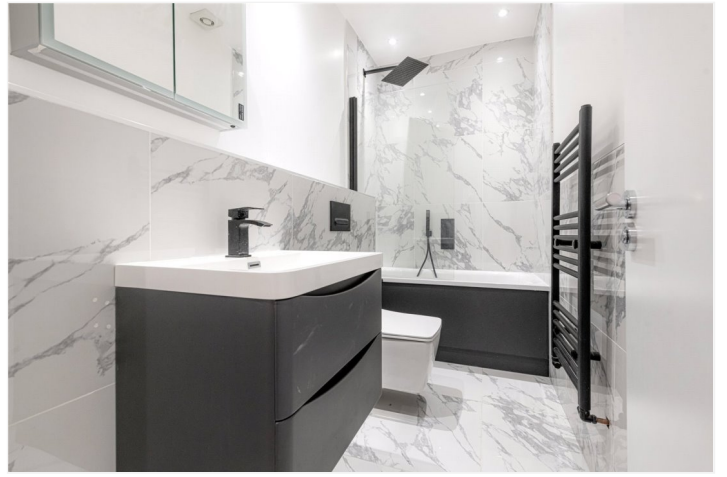
Ideally located within a well-maintained Period building, this property benefits from having had a complete refurbishment throughout and is finished to a superb standard. Comprises a very large double aspect reception with panoramic bi folding doors that overlook the garden, a modern fully fitted kitchen with all integrated appliances, three gorgeous bathrooms (two of which are en-suite) and four spacious rooms .

North Kensington's multicultural hotspot, Ladbroke Grove is a prime example of a modern urban living offering plenty of unique restaurants, coffee shops and antique furniture stores. Renowned Portobello market and transport links at Ladbroke Grove are a stone throw away.

AT A GLANCE

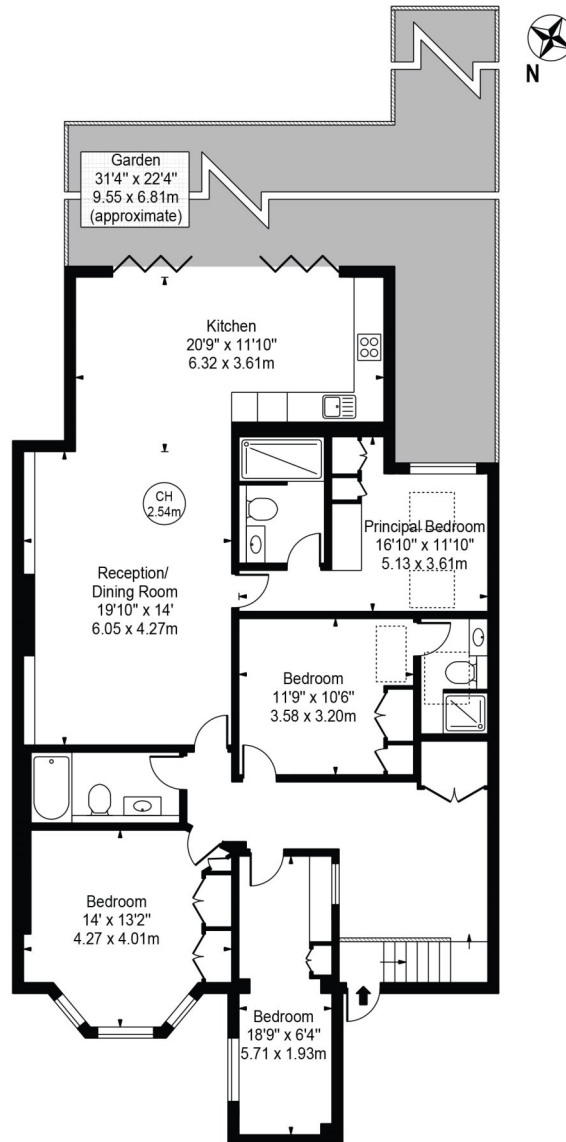
- NEWLY REFURBISHED
- MODERN
- SPACIOUS
- PRIVATE GARDEN
- CLOSE TO TRANSPORT LINKS
- CLOSE TO PORTOBELLO ROAD





Cambridge Gardens

Approx. Gross Internal Area 1436 Sq Ft - 133.41 Sq M



Lower Ground Floor

For Illustration Purposes Only - Not To Scale

This floor plan should be used as a general outline for guidance only and does not constitute in whole or in part an offer or contract. Any intending purchaser or lessee should satisfy themselves by inspection, searches, enquiries and full survey as to the correctness of each statement. Any areas, measurements or distances quoted are approximate and should not be used to value a property or be the basis of any sale or let.

Copyright Morriarti Photography & Design LTD

This floorplan is for illustration purposes only and is not to scale. The position and size of doors, windows, appliances and other features are approximate.

North Kensington | 020 7792 5000 | northkensington@winkworth.co.uk

Winkworth

for every step...

winkworth.co.uk

Winkworth wishes to inform prospective buyers and tenants that these particulars are a guide and act as information only. All our details are given in good faith and believed to be correct at the time of printing but they don't form part of an offer or contract. No Winkworth employee has authority to make or give any representation or warranty in relation to this property. All fixtures and fittings, whether fitted or not are deemed removable by the vendor unless stated otherwise and room sizes are measured between internal wall surfaces, including furnishings.