



LONDON ROAD, SE23
£375,000 LEASEHOLD

We are pleased to present a beautifully designed residence in the heart of the vibrant SE23 area. This modern flat is perfect for individuals or couples seeking a blend of style, comfort, and convenience.

Winkworth

Forest Hill | | foresthill@winkworth.co.uk 9 London Road, Forest Hill, SE23
3TW

winkworth.co.uk

for every step...



SUMMARY:

The flat boasts an open-plan living area that offers ample space for both relaxation and entertaining. Large windows flood the room with natural light, enhancing the warm and inviting atmosphere.

The well-appointed kitchen is equipped with high-quality appliances and plenty of storage space, making it ideal for those who love to cook and entertain.

The sleek bathroom features modern fixtures and fittings, providing a touch of luxury to your daily routine.

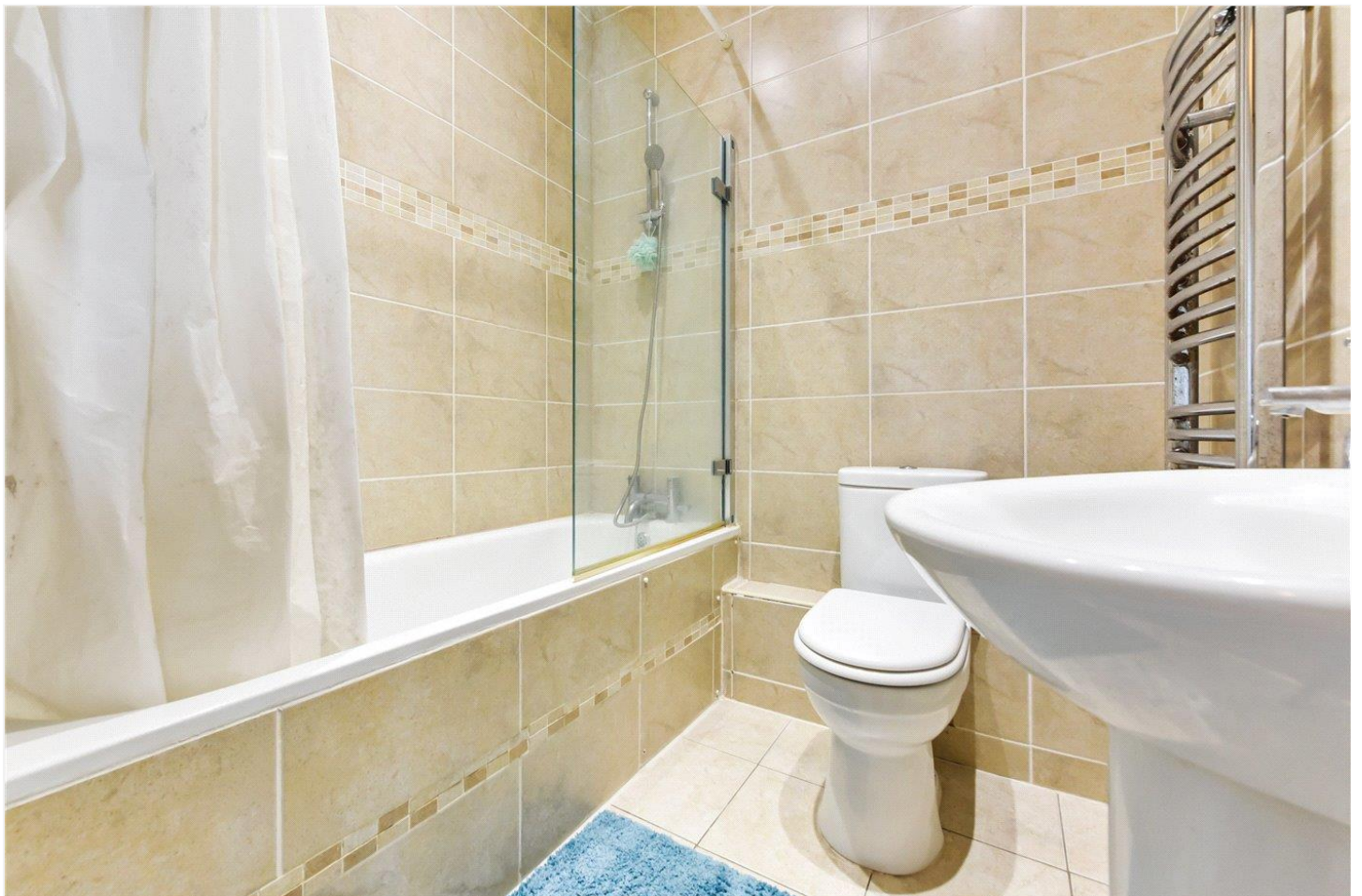
This two-bedroom apartment boasts spacious rooms and includes an en suite in the main bedroom for added convenience. Large windows throughout the flat provide an abundance of natural light, enhancing the welcoming and airy atmosphere. This apartment offers a comfortable and modern living space perfect for a variety of lifestyles.

Location:

Located in SE23, Hamlet House is well-connected to the rest of London. Forest Hill station is just a short walk away, providing quick and easy access to the city via the Overground and National Rail services.

The area boasts a variety of local amenities, including shops, cafes, and restaurants, catering to all your daily needs and preferences.

For those who enjoy outdoor activities, the flat is close to several parks and green spaces, including the popular Horniman Gardens, perfect for leisurely walks and picnics.

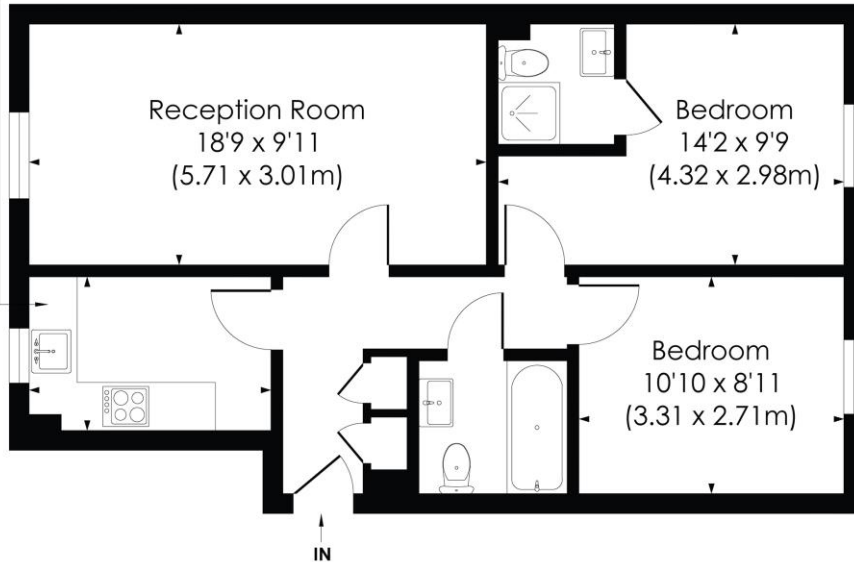


LONDON ROAD, SE23

Approx. Gross Internal Floor Area
616 Sq. ft/57.25 Sq. m



Kitchen
9'11 x 6'4
(3.02 x 1.92m)



SECOND FLOOR

pixangle
PROPERTY MARKETING

© Pixangle Property Marketing Ltd. info @pixangle.com Tel: 0208 870 2118
This floor plan has been prepared for illustration purposes only, in accordance with the latest RICS code of measuring and is not to scale.
All measurements and areas are approximate and whilst every effort has been made to ensure the accuracy of the plan contained here, no responsibility is taken for any error, omission or misstatement.

This floorplan is for illustration purposes only and is not to scale. The position and size of doors, windows, appliances and other features are approximate.

Tenure: Leasehold

Term: 103 years

Forest Hill | | foresthill@winkworth.co.uk
9 London Road, Forest Hill, SE23 3TW

Winkworth

for every step...

winkworth.co.uk

Winkworth wishes to inform prospective buyers and tenants that these particulars are a guide and act as information only. All our details are given in good faith and believed to be correct at the time of printing but they don't form part of an offer or contract. No Winkworth employee has authority to make or give any representation or warranty in relation to this property. All fixtures and fittings, whether fitted or not are deemed removable by the vendor unless stated otherwise and room sizes are measured between internal wall surfaces, including furnishings.