



CHURCH LANE, KINGSBURY, LONDON, NW9
OIEO £900,000 FREEHOLD

FOUR BEDROOM DETACHED HOUSE WITH HUGE DEVELOPMENT SCOPE

Kingsbury | 020 8204 0000 | kingsbury@winkworth.co.uk



winkworth.co.uk



A superb opportunity to acquire a detached house in a prime location on Church Lane, Kingsbury. This property offers excellent potential for extension and redevelopment (STPP), allowing its new owners to infuse it with their own modern touch. The home features two reception rooms, a functional kitchen, two double bedrooms, one single bedroom, and a family bathroom. Externally, you'll find ample green space and off-street parking. Conveniently located near Wembley Park Station (Jubilee and Metropolitan Lines) and the vibrant amenities of Wembley and Kingsbury, this property is also within the catchment area for esteemed schools such as Lycée International de Londres, Fryent Primary School, Ark Elvin Academy, and St Robert Southwell. For nature enthusiasts, the property sits between Fryent Country and Welsh Harp Reservoir. An internal viewing is advised to appreciate the potential of this property at its entirety.

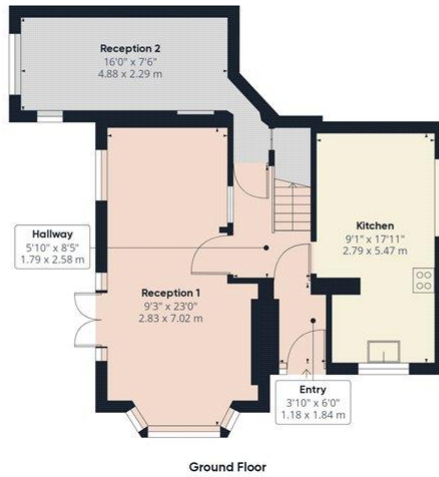


for every step...

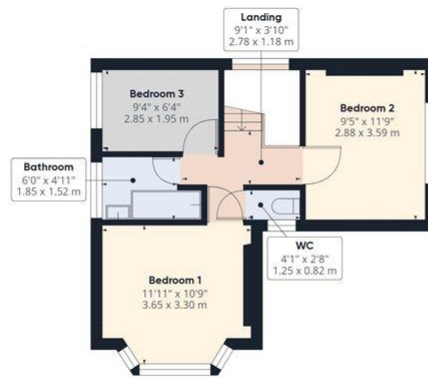


Winkworth

for every step...



Ground Floor



Floor 1

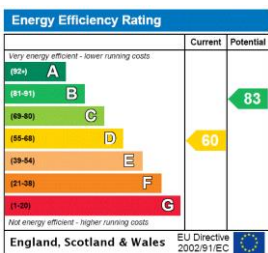
Approximate total area^m
 996.96 ft²
 92.62 m²

(1) Excluding balconies and terraces

While every attempt has been made to ensure accuracy, all measurements are approximate, not to scale. This floor plan is for illustrative purposes only.

GIRAFFE360

This floorplan is for illustration purposes only and is not to scale. The position and size of doors, windows, appliances and other features are approximate.



Tenure: Freehold

Council Tax Band: E

Where no figures are shown, we have been unable to ascertain the information. All figures that are shown were correct at the time of printing.

Kingsbury | 020 8204 0000 | kingsbury@winkworth.co.uk



for every step...

winkworth.co.uk

Winkworth wishes to inform prospective buyers and tenants that these particulars are a guide and act as information only. All our details are given in good faith and believed to be correct at the time of printing but they don't form part of an offer or contract. No Winkworth employee has authority to make or give any representation or warranty in relation to this property. All fixtures and fittings, whether fitted or not are deemed removable by the vendor unless stated otherwise and room sizes are measured between internal wall surfaces, including furnishings.