



**LIGHTERAGE COURT, BRENTFORD, TW8**  
**£1,800 PER MONTH**

**A DELIGHTFUL TWO BEDROOM FLAT SITUATED IN  
A RIVERSIDE DEVELOPMENT WITH LIFT**

**Brentford | 020 8560 1125 | [brentford@winkworth.co.uk](mailto:brentford@winkworth.co.uk)**



### **DESCRIPTION:**

This spacious and well presented apartment offers accommodation of circa 829 sq ft and comprises a large master bedroom with en suite, a good sized second bedroom, a family bathroom and a well-appointed, bright open-plan kitchen/reception room.

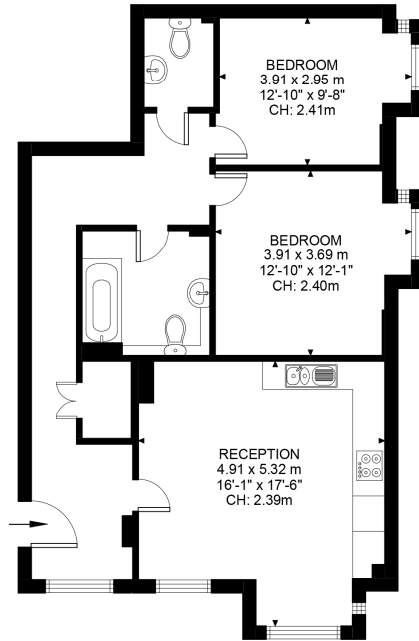
### **ACCOMMODATION**

Riverside development  
Two double bedrooms  
Open plan living area  
Bathroom  
Separate w.c.  
Well presented  
Long lease  
Shared ownership option









First Floor  
829 ft<sup>2</sup>

High Street, TW8  
Approximate Gross Internal Area  
77.01 SQ.M / 829 SQ.FT

Illustration for identification purposes only. Not to scale.  
Floor Plan Drawn According To RICS Guidelines.

This floorplan is for illustration purposes only and is not to scale. The position and size of doors, windows, appliances and other features are approximate.

Energy Efficiency Rating	
	Current Potential
Very energy efficient - lower running costs	
(92+) <b>A</b>	
(81-91) <b>B</b>	86 86
(69-80) <b>C</b>	
(55-68) <b>D</b>	
(39-54) <b>E</b>	
(21-38) <b>F</b>	
(1-20) <b>G</b>	
Not energy efficient - higher running costs	
England, Scotland & Wales	EU Directive 2002/91/EC