



**2ND FLOOR FLAT, CHELSEA EMBANKMENT, CHELSEA, LONDON, SW3  
£1,650 PER WEEK FURNISHED**

**RARE OPPORTUNITY TO RENT A  
CONTEMPORARY, SPACIOUS LATERAL 2  
DOUBLE BEDROOM APARTMENT .**

**Knightsbridge & Chelsea | 0207 589 6616 | [knightsbridge@winkworth.co.uk](mailto:knightsbridge@winkworth.co.uk)**

Tenant Fees Apply: Details of fees for tenant referencing, tenancy agreement admin fees and renewal fees are available on the Winkworth website and the link can be found with the displayed rent for the property. Tenants should ensure they are fully conversant with these upfront fees and other costs that are involved at the outset of the tenancy before making an offer to rent and your local Winkworth office will provide written details upon request.



## **DESCRIPTION:**

Rare opportunity to rent a contemporary bright and spacious lateral 2 double bedroom apartment with fabulous river views.

The property benefits from a large reception/dining room, ideal for entertaining with a balcony overlooking the river Thames.

Fully equipped modern kitchen.

Both bedrooms are double, have an en suite bathroom and excellent built in storage.

The property comes furnished.

RBKC Council Tax Band E

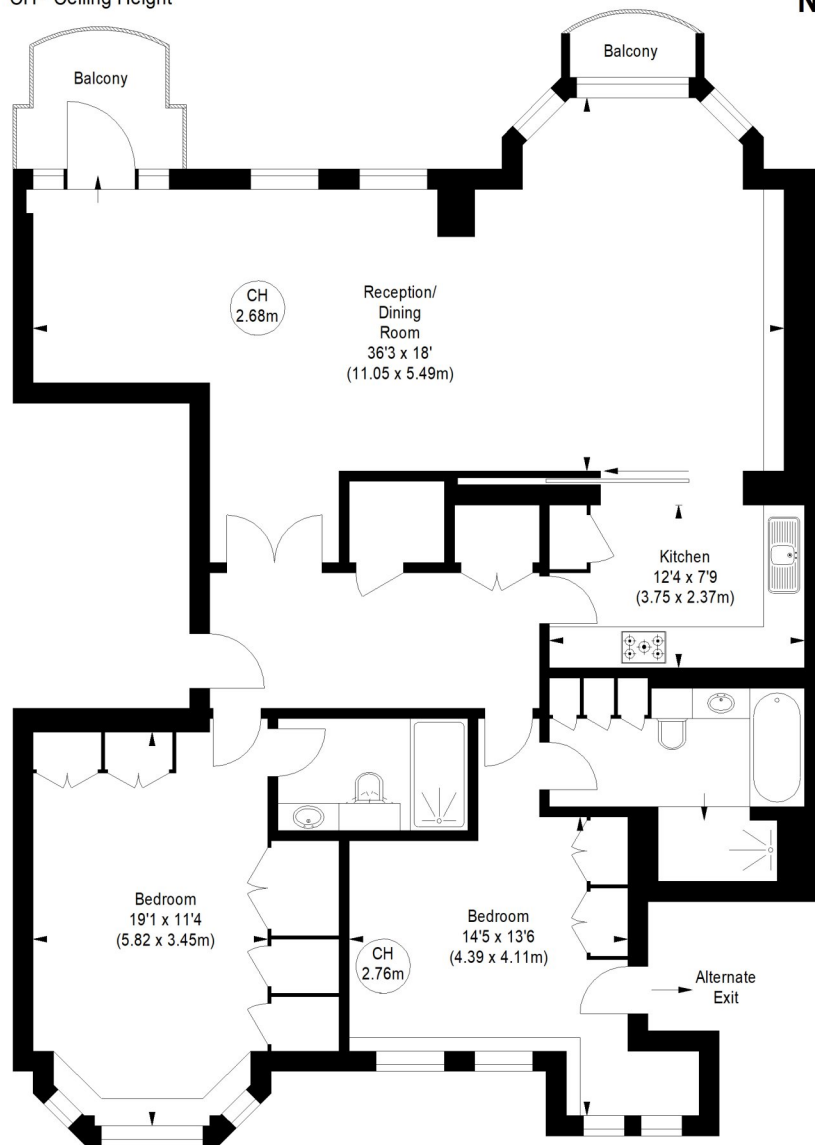


# CHELSEA EMBANKMENT, SW3

Approximate gross internal area  
1410 sq ft / 130.99 sq m



Key :  
CH - Ceiling Height



## SECOND FLOOR

Not to scale, for guidance only and must not be relied upon as a statement of fact.  
All measurements and areas are approximate only

This floorplan is for illustration purposes only and is not to scale. The position and size of doors, windows, appliances and other features are approximate.

| Energy Efficiency Rating                    |          | Current | Potential |
|---|----------|---------|-----------|
| (92-100)                                    | <b>A</b> |         |           |
| (81-91)                                     | <b>B</b> |         |           |
| (69-80)                                     | <b>C</b> |         |           |
| (55-68)                                     | <b>D</b> |         |           |
| (39-54)                                     | <b>E</b> |         |           |
| (21-38)                                     | <b>F</b> |         |           |
| (1-20)                                      | <b>G</b> |         |           |
| Not energy efficient - higher running costs |          |         |           |
| England, Scotland & Wales                   |          | 81      | 85        |
| EU Directive 2002/91/EC                     |          |         |           |