



ST. AUSTELL CLOSE, EDGWARE, MIDDLESEX, HA8
£565,000 FREEHOLD

THREE BEDROOM MID TERRACE HOUSE IN A PEACFUL CUL DE SAC

Kingsbury | 020 8204 0000 | kingsbury@winkworth.co.uk



for every step...

winkworth.co.uk



Discover this charming mid-terrace home, beautifully positioned within a peaceful cul de sac. A home which has been fondly cherished through generations. The welcoming through lounge and dining room flows seamlessly into a well-appointed kitchen, opening up to a lovingly maintained rear garden featuring a storage outbuilding. The ground floor also hosts a convenient W/C. Upstairs, you'll find two spacious double bedrooms, a cozy single bedroom, and a well-appointed family bathroom. Located less than a five-minute walk from Queensbury Underground Station (Jubilee Line), supermarkets, schools, and various amenities, this home further benefits off-street parking. With scope to extend (STPP), the property presents as a perfect blank canvas for it's new owners vision. An internal viewing is advised.



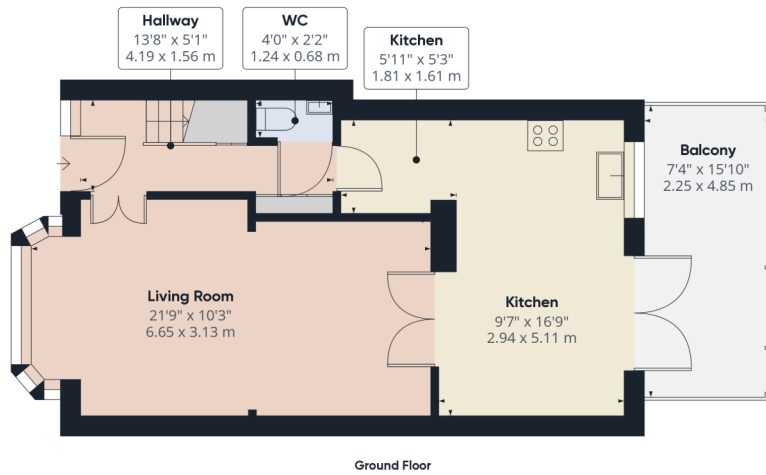
Winkworth

for every step...

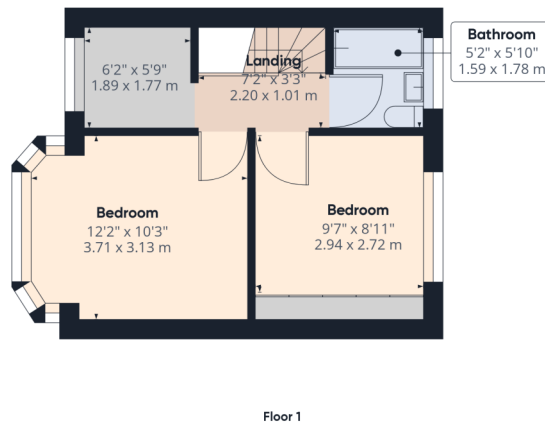


Winkworth

for every step...



Approximate total area⁽¹⁾
824.88 ft²
76.63 m²

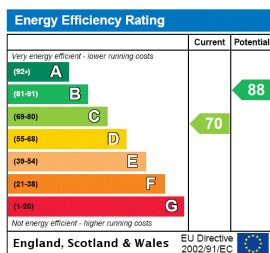


(1) Excluding balconies and terraces

While every attempt has been made to ensure accuracy, all measurements are approximate, not to scale. This floor plan is for illustrative purposes only.

GIRAFFE360

This floorplan is for illustration purposes only and is not to scale. The position and size of doors, windows, appliances and other features are approximate.



Tenure: Freehold

Council Tax Band: D

Where no figures are shown, we have been unable to ascertain the information. All figures that are shown were correct at the time of printing.

Kingsbury | 020 8204 0000 | kingsbury@winkworth.co.uk



for every step...

winkworth.co.uk

Winkworth wishes to inform prospective buyers and tenants that these particulars are a guide and act as information only. All our details are given in good faith and believed to be correct at the time of printing but they don't form part of an offer or contract. No Winkworth employee has authority to make or give any representation or warranty in relation to this property. All fixtures and fittings, whether fitted or not are deemed removable by the vendor unless stated otherwise and room sizes are measured between internal wall surfaces, including furnishings.