



Dudsbury Court

Glissons, Ferndown BH22 9FJ

Guide Price £550,000

Winkworth



GUIDE PRICE £550,000
FREEHOLD

This beautifully finished, four double bedroom, two bathroom detached house is positioned in an extremely pleasant semi-rural location, directly overlooking equestrian fields.

Further benefits include a garage with light and power, an Ecodan heat pump which supplies domestic heat and hot water, as well as solar panels.

Dudsbury Court is a superb small development of modern environmentally friendly houses and in addition to a secluded rear garden there is a further side garden offering a vast amount of scope for extension in the future.

Four Double Bedrooms
Underfloor Heating
Ecodan Heat Pump
En-suite Shower Room
Guest WC
Utility Room
Kitchen/Diner
Solar Panels

Stunning Views Across Equestrian Fields
Further Side Garden Offering Excellent Scope
For Extension

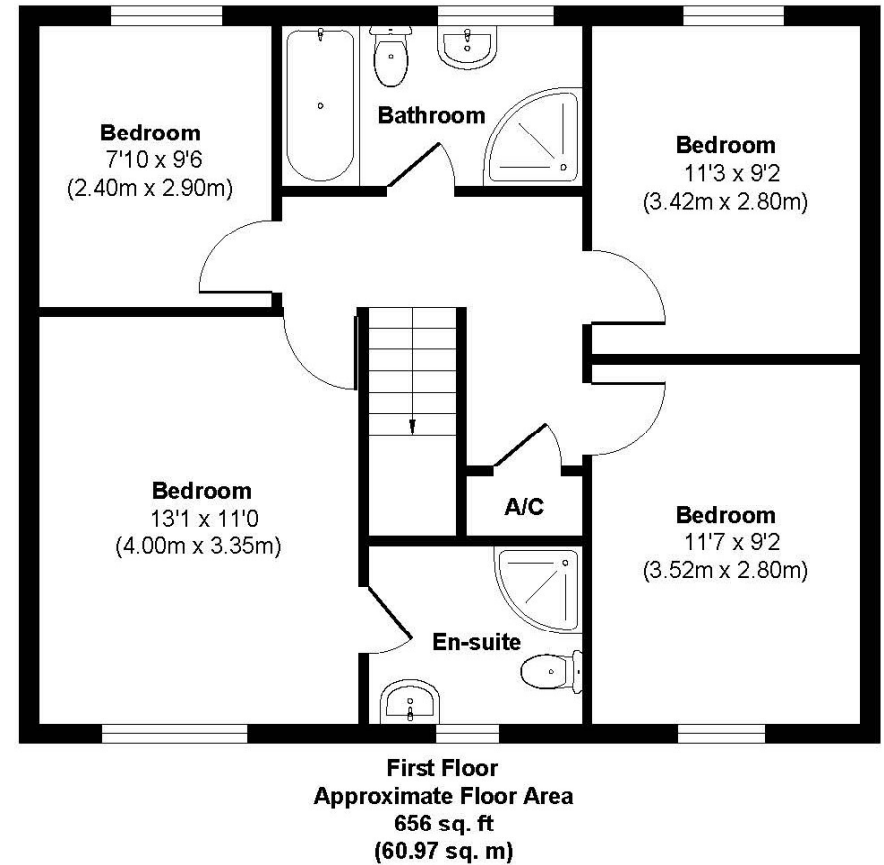
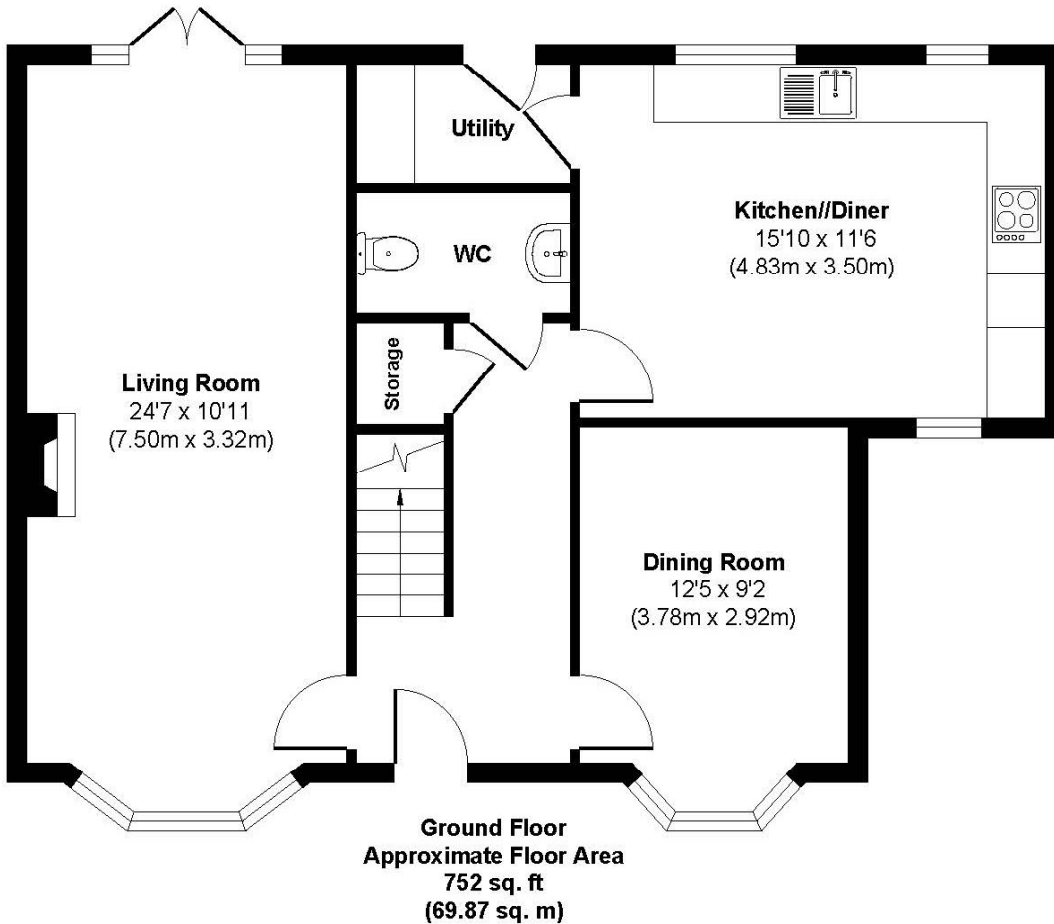
EPC TBC | Council Tax Band E

01202 434365
ferndown@winkworth.co.uk





Dudsbury Court



Approx. Gross Internal Floor Area 1408 sq. ft / 130.84 sq. m
Illustration for identification purposes only, measurements approximate and not to scale.



LOCATION

Positioned in a sought after, peaceful location close to excellent schools and Ferndown town centre, which has a range of shops, cafes and amenities, including an M&S Foodhall. You can explore the outdoors at nearby Longham Lakes and enjoy award winning beaches, which are just twenty minutes away. Nearby bus routes give you easy access to Bournemouth, Poole & Wimborne all of which have an excellent range of facilities. The A31 provides quick access to the New Forest, Southampton, London and beyond for the commuter by car.

Winkworth Ferndown

406 Ringwood Road, Ferndown, Dorset, BH22 9AU

01202 434365 | ferndown@winkworth.co.uk

winkworth.co.uk/ferndown

Winkworth