



9 Donnington Elms, Donnington, Newbury, RG14 2JF

Winkworth



## 9 Donnington Elms

Donnington, Newbury, RG14 2JF

**\*\*NO ONWARD CHAIN\*\* A spacious three bedroom apartment set within a short distance of Newbury town center.**

The apartment is on the first floor and offers great views and allocated parking.

There is a spacious sitting/dining room with a feature bay window, a well fitted kitchen/breakfast room with fitted appliances, bedroom three, master bedroom with ensuite shower room, further double bedroom and a family bathroom.

There are also communal grounds and an off road parking space.

West Berkshire Council Band C  
EPC C

## AT A GLANCE

- 3 Double Bedrooms
- No onward chain
- Allocated parking
- Communal gardens
- Large bay windows
- Ensuite in master
- Open kitchen/diner

## UTILITIES

Mains water, electricity, drainage.

Electric heating.

West Berkshire Council Band C  
EPC C

## LEASEHOLD DETAILS

999 Year lease from 2004

Service Charge 21/22 £1428

Ground rent £250 pa (Paid six monthly).

Henwick Properties are block managers.

Copy of lease available on request

## DIRECTIONS

sat nav RG14 2JF What three words///shares.vibrate.fleet

## SITUATION

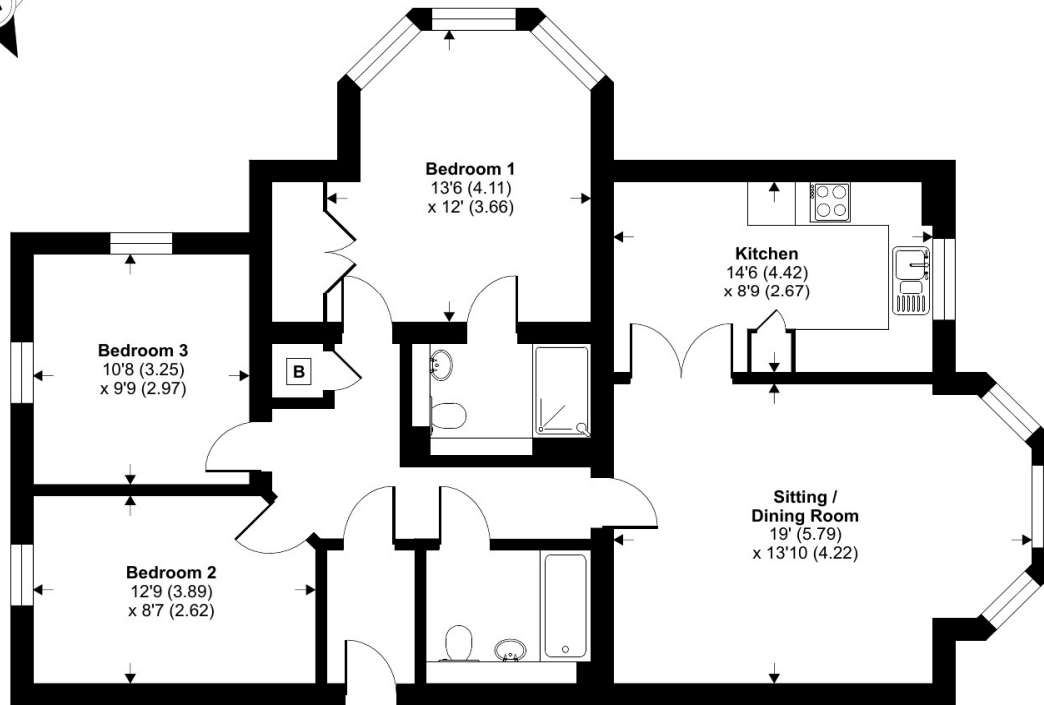
The flat is situated in an exclusive development and overlooking the Cricket Field. The block is set within the sought-after location of Donnington.



## Oxford Road, Donnington, Newbury, RG14

Approximate Area = 1015 sq ft / 94.2 sq m

For identification only - Not to scale



### Newbury Office

43 Northbrook Street, Newbury, Berkshire RG14 1DT

01635 552552 | [newbury@winkworth.co.uk](mailto:newbury@winkworth.co.uk)

[winkworth.co.uk/newbury](http://winkworth.co.uk/newbury)

# Winkworth

See things differently.