



GROSVENOR ROAD, UK, SW1V
£2,000,000 FREEHOLD

Winkworth



GROSVENOR ROAD, UK, SW1V

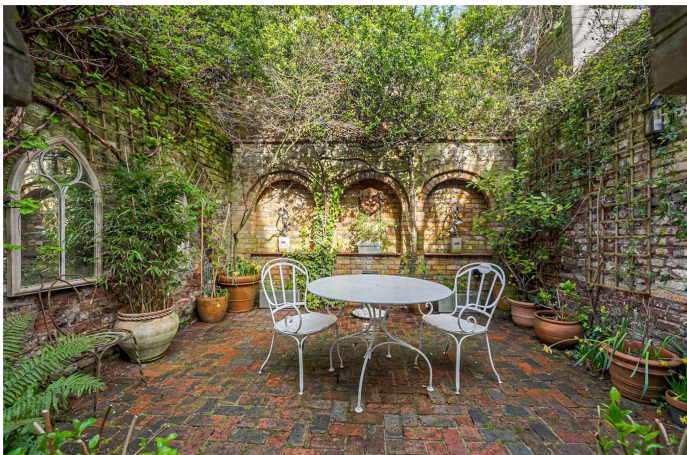
A rare opportunity to purchase a freehold house with the most incredible views over the River Thames towards Battersea Power Station. The house has been in the same ownership for nearly 30 years and offers an incoming purchaser the chance to put their own stamp on this truly magnificent central London property.

Nestled amongst this pretty late Regency-era small terrace of houses this incredible family home offers the most amazing vista over the river and on towards Battersea Power Station. When inside one is cocooned in tranquillity and the house offers fabulous light throughout as well as privacy and security.

Accessed through the splendid front garden the accommodation currently offers a kitchen and dining room on the raised ground floor with balcony to the rear, first floor reception room, master bedroom and bathroom upstairs and two bedrooms on the lower floor with a utility room, storage and further bathroom on the half landing. The Italianate courtyard garden to the rear is quiet and has a delightful water feature.

Full of original features typical of the period the house has a wrought iron veranda, Cuban mahogany banister rails, slender lambs tongue glazing bars on the sash windows and cornices and mouldings galore. The first occupant was reputed to be a Thames tug captain who, in pre-embankment days, tied up his boat at his door; a later resident was a British ambassador to Washington. The late Lord Snowdon described the house as a "late Regency haven of human-scale architecture".

Ideally located for Pimlico underground and a short walk to Victoria and Sloane Square and with the 24 bus stop close by the house is easily accessible whilst still feeling as secluded as one can in the most central of London locations.

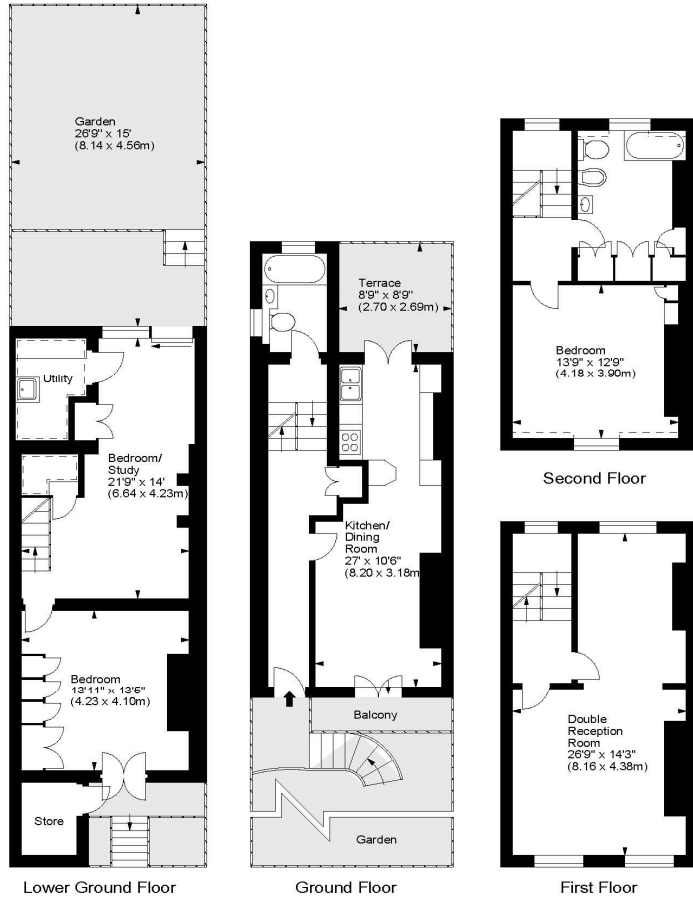




Grosvenor Road, SW1



Approx. Gross Internal Area : 1704 Sq Ft - 158.30 Sq M
 Approx. Storage Area : 31 Sq Ft - 2.88 Sq M
 Approx. Total Area : 1735 Sq Ft - 161.19 Sq M



For illustration purposes only. Not to scale.
 All measurements are taken and shown at floor level.
 www.r3photography.co.uk © Photography / Floor Plans / Lease Plans / EPCs



Pimlico & Westminster | 020 7828 1786 | pimlico@winkworth.co.uk

winkworth.co.uk

Winkworth wishes to inform prospective buyers and tenants that these particulars are a guide and act as information only. All our details are given in good faith and believed to be correct at the time of printing but they don't form part of an offer or contract. No Winkworth employee has authority to make or give any representation or warranty in relation to this property. All fixtures and fittings, whether fitted or not are deemed removable by the vendor unless stated otherwise and room sizes are measured between internal wall surfaces, including furnishings.

Winkworth