



ST. LAWRENCE COURT, DE BEAUVOIR ESTATE, LONDON, N1
£325,000 LEASEHOLD

A LARGE ONE BEDROOM APARTMENT IN DE BEAUVOIR TOWN

Highbury | 0207 989 7000 | highbury@winkworth.co.uk

Winkworth

winkworth.co.uk

See things differently



DESCRIPTION:

Spanning 533sqft of lateral space is this one bedroom flat positioned on the first floor of this well-maintained purpose built block. The property offers well proportioned rooms and is flooded with natural light throughout. Accommodation includes a eat in kitchen, master bedroom, family bathroom and spacious reception room. The property further benefits from ample storage and is offered to the market chain free.

St. Lawrence Court is perfectly set for easy access to Shoreditch and the City and is also surrounded by some great pubs in De Beauvoir alongside delis and cafes on Southgate road.

Regents canal is just moments away and offers a scenic route to Victoria Park and Maida Vale whilst access to West and East London can be easily facilitated via, Haggerston overground, Dalston Kingsland and Old Street underground.

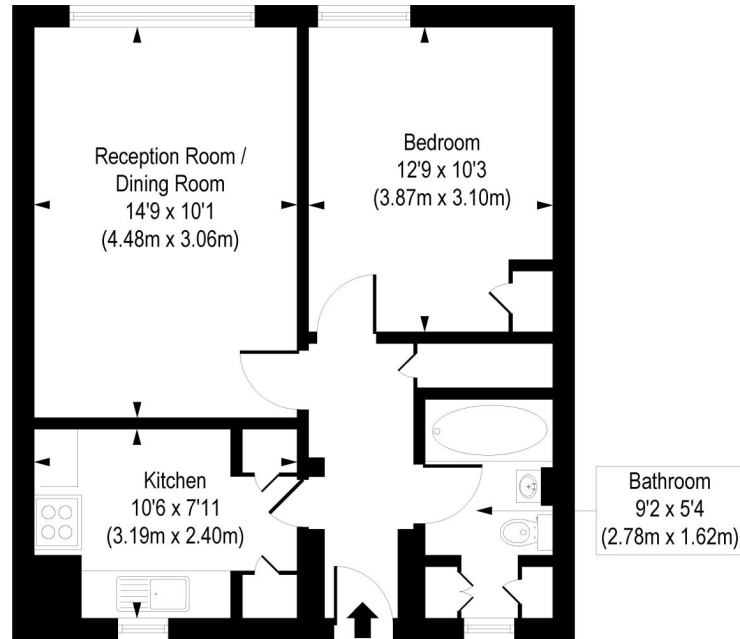
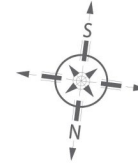
Winkworth



Winkworth

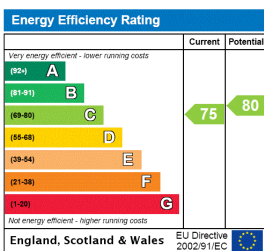
St. Lawrence Court, De Beauvoir Estate, N1

Approx. Gross Internal Floor Area 533 sq. ft / 49.49 sq. m



COMPLIANT WITH RICS CODE OF MEASURING PRACTICE. Floorplan is for illustrative purposes only and is not to scale. Every attempt has been made to ensure the accuracy of the floorplan shown, however all measurements, fixtures, fittings and data shown are an approximate interpretation for illustrative purposes only. Liability for errors, omissions or mis-statement through negligence or otherwise is hereby excluded.

This floorplan is for illustration purposes only and is not to scale. The position and size of doors, windows, appliances and other features are approximate.



Highbury | 0207 989 7000 | highbury@winkworth.co.uk



winkworth.co.uk

See things differently

Winkworth wishes to inform prospective buyers and tenants that these particulars are a guide and act as information only. All our details are given in good faith and believed to be correct at the time of printing but they don't form part of an offer or contract. No Winkworth employee has authority to make or give any representation or warranty in relation to this property. All fixtures and fittings, whether fitted or not are deemed removable by the vendor unless stated otherwise and room sizes are measured between internal wall surfaces, including furnishings.