



NORTHIAM STREET, LONDON, E9
£300,000 LEASEHOLD

A ONE BEDROOM FLAT WITH OFF STREET PARKING JUST MOMENTS TO VICTORIA PARK

Hackney | 020 8986 4216 | hackney@winkworth.co.uk



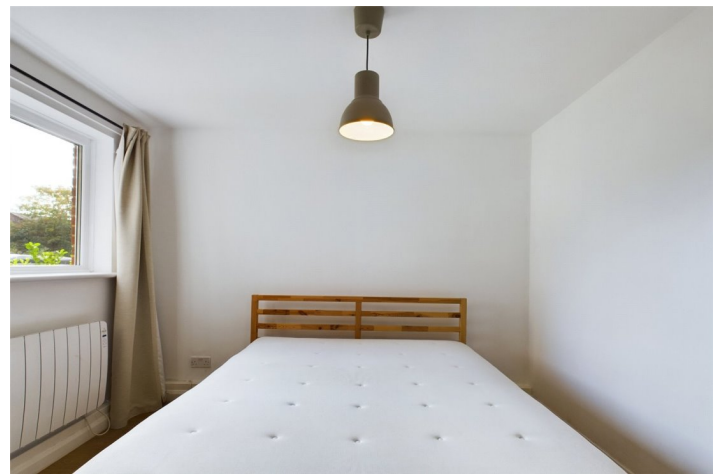


DESCRIPTION:

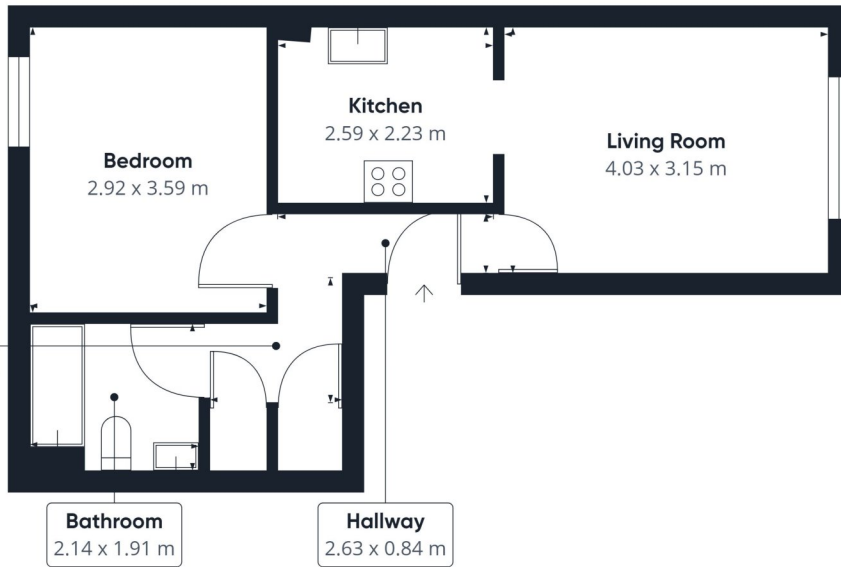
This one-bedroom apartment boasts approximately 420 sq. ft of living space. Upon entering you will find a kitchen that opens into the inviting living room, creating a welcoming and functional space. The generously sized bedroom provides a comfortable room with ample space for wardrobes, and a three-piece bathroom. The hallway features two convenient storage cupboards, ensuring ample space for your belongings. One of the standout features of this flat is the inclusion of a dedicated parking space.

Situated in an exceptional location, residents of Northiam Street enjoy the luxury of being just moments away from the lush greenery of Victoria Park. The proximity to Cambridge Heath station ensures excellent transport links, connecting you effortlessly to the rest of London. The local area offers a vibrant and diverse range of amenities, including trendy cafes, restaurants, and shops, creating a lively and engaging community atmosphere.

Winkworth



Winkworth



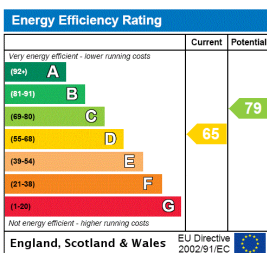
Approximate total area⁽¹⁾
39.10 m²

(1) Excluding balconies and terraces

While every attempt has been made to ensure accuracy, all measurements are approximate, not to scale. This floor plan is for illustrative purposes only.

GIRAFFE360

This floorplan is for illustration purposes only and is not to scale. The position and size of doors, windows, appliances and other features are approximate.



Hackney | 020 8986 4216 | hackney@winkworth.co.uk



winkworth.co.uk

See things differently

Winkworth wishes to inform prospective buyers and tenants that these particulars are a guide and act as information only. All our details are given in good faith and believed to be correct at the time of printing but they don't form part of an offer or contract. No Winkworth employee has authority to make or give any representation or warranty in relation to this property. All fixtures and fittings, whether fitted or not are deemed removable by the vendor unless stated otherwise and room sizes are measured between internal wall surfaces, including furnishings.