



Downs Road, South Wonston, Winchester, Hampshire, SO21 3EH

Winkworth



Downs Road, South Wonston, Winchester, Hampshire, SO21 3EH

Appealing Bungalow with Large Garden in the heart of the Village

This appealing detached bungalow is conveniently situated close to amenities in the very heart of the popular village of South Wonston. Although it could benefit from modernisation, the bungalow is bright, with good sized rooms, a super garden at both the front and the rear.

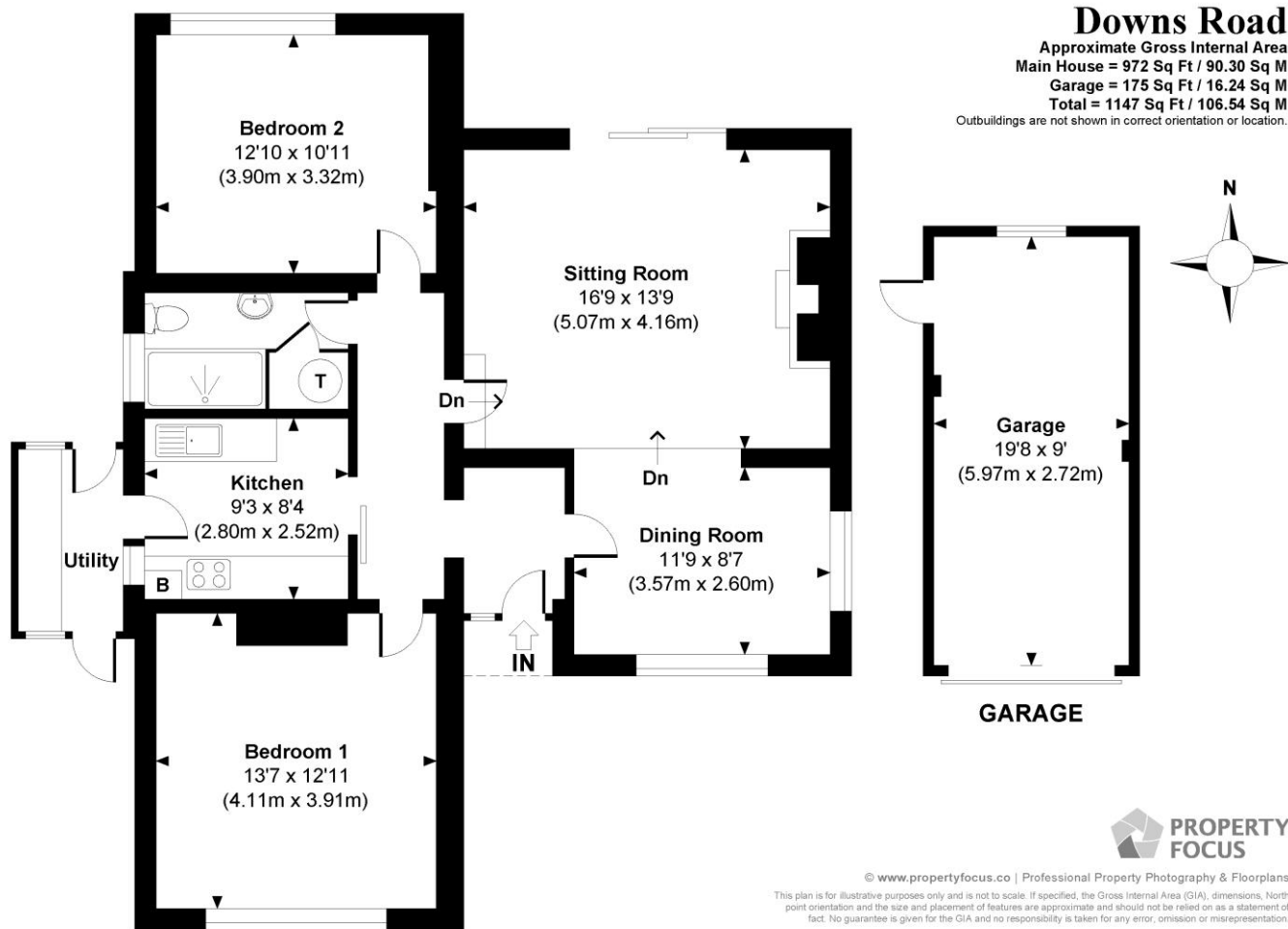


A covered porch leads into the hallway, with reception rooms off to the right and with the kitchen, the bathroom and the bedrooms leading off to the left. The dining room is a bright double-aspect space at the front with views over the front garden. Stepping down towards the back, one reaches an excellent sitting room with large fireplace as an attractive centrepiece, and with sliding doors leading out onto the rear patio. On the other side of the bungalow, the kitchen has plenty of units at both base and eye-level, and there is ample space for free-standing appliances such as cooker, fridge and washing machine. A door to one end leads through to the very useful lean-to with storage and with doors at both ends to reach the gardens. The two bedrooms are both good doubles, and there is a shower room with double shower between the two.



The plot is a very good size, with the property very pleasantly set back from Downs Road behind a long drive with a mostly lawned garden to one side. There is ample parking in front of the detached garage. The lovely rear garden has beautiful shrubs and plants adorning the extensive flower beds to each side of the well-tended lawn, while larger shrubs are located towards the rear. There is an attractive pond to one side, and a patio to the rear of the property for outside table and chairs.





Downs Road, South Wonston, Winchester, Hampshire, SO21 3EH

Directions

Leave Winchester on Andover Road (B3420) and follow this road to the roundabout. Turn right sign posted for Sutton Scotney and at the next roundabout turn right for South Wonston and Sutton Scotney. Proceed along this road and turn right onto Downs Road. The property is located on the left-hand side after you have passed the village hall on your right.

Location

Downs Road is located in the popular village of South Wonston, approximately 6 miles from the City of Winchester, and 5 miles from Micheldever, both with fast rail links to London Waterloo in approximately 55 minutes. Winchester has a wide selection of amenities, with its high street shops, boutiques, library, coffee shops, public houses, restaurants, theatre, cinema, museums and, of course, the city's historic cathedral. There is easy access to the M3 motorway, A34 and A303. The village of South Wonston has a well-regarded Primary school as well as a village shop and Post Office.

Tenure: Freehold

Services

Mains gas, electricity, water and drainage

Winchester City Council

Council tax band: E

EPC rating: D

Viewings

Strictly by appointment with Winkworth Winchester Office

Winkworth.co.uk/winchester

Winkworth Winchester

2 Black Swan Buildings, Southgate Street, Winchester, SO23 9DT
 01962 866 777 | winchester@winkworth.co.uk

Winkworth Country House Department

13 Charles II Street, St James's, London, SW1Y 4QU
 020 7870 4878 | countryhouse@winkworth.co.uk

Winkworth

See things differently