



PENDA'S MEAD, LINDISFARNE WAY, LONDON, E9
'OFFERS IN EXCESS OF' £300,000 LEASEHOLD

A GENEROUS ONE BEDROOM FLAT CLOSE TO RIVER LEE NAVIGATION AND HACKNEY MARSHES

Hackney | 020 8986 4216 | hackney@winkworth.co.uk

Winkworth



DESCRIPTION:

A spacious one double bedroom flat located on the first floor of this purpose-built block next to Hackney Marshes and River Lee canal. Measuring approximately 564sqft, and comprising a large living room with south facing windows, the bright hallway leads to a good sized eat in kitchen, spacious double bedroom and a three-piece bathroom suite. The property further benefits from a security entry phone no onward chain.

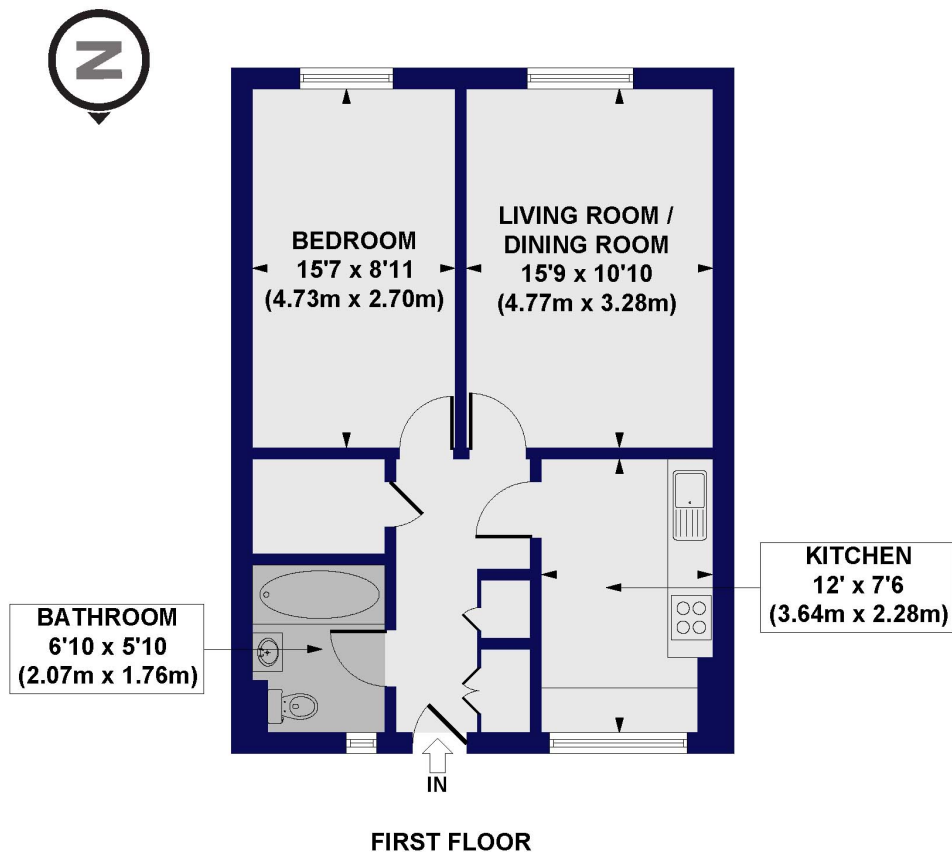
Situated in the vibrant E9 postcode, Penda's Mead provides a gateway to an array of local attractions and amenities. Enjoy leisurely strolls along the picturesque River Lee, just a stone's throw away, as well as Hackney Marshes. For those who value connectivity, you'll find excellent transport links nearby. With easy access to public transportation, including buses and trains, commuting becomes a breeze.

Winkworth



Winkworth

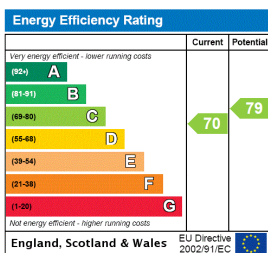
Penda's Mead, Lindisfarne Way, E9
 Approx. Gross Internal Floor Area 564 sq. ft / 52.44 sq. m



All measurements of walls, doors, windows, fittings and appliances, including their size and location, are shown as standard sizes and do not constitute any warranty or representation by the seller, their agent or CP Creative. Any intending purchaser must satisfy himself by inspection or otherwise as to the correctness of the information contained in these plans. This plan is for illustrative purposes only and should be used as such by any prospective purchasers.

Winkworth

This floorplan is for illustration purposes only and is not to scale. The position and size of doors, windows, appliances and other features are approximate.



Hackney | 020 8986 4216 | hackney@winkworth.co.uk

Winkworth

winkworth.co.uk

See things differently

Winkworth wishes to inform prospective buyers and tenants that these particulars are a guide and act as information only. All our details are given in good faith and believed to be correct at the time of printing but they don't form part of an offer or contract. No Winkworth employee has authority to make or give any representation or warranty in relation to this property. All fixtures and fittings, whether fitted or not are deemed removable by the vendor unless stated otherwise and room sizes are measured between internal wall surfaces, including furnishings.