

DRAYTON GROVE, LONDON, W13

£675,000 FREEHOLD

Council Tax Band: E  
EPC: D

Ealing & Acton | 0208 896 0123 | ealing@winkworth.co.uk

**Winkworth**

for every step...

winkworth.co.uk



## DESCRIPTION:

Nestled in the charming Neighbourhood of West Ealing, This delightful Freehold property offers the perfect blend of comfort and convenience. Boasting Two generously Sized bedrooms, ideal for a small family or professionals seeking extra space, the residence exudes warmth and character throughout. Its moderate garden provides a tranquil retreat for outdoor relaxation or entertaining guests. With Ealing's array of amenities, including shops, restaurants, and excellent transport links, just a stone's throw away, this property presents an inviting opportunity for those seeking a cozy and well-connected home in this desirable London Locale.



**Winkworth**

for every step...



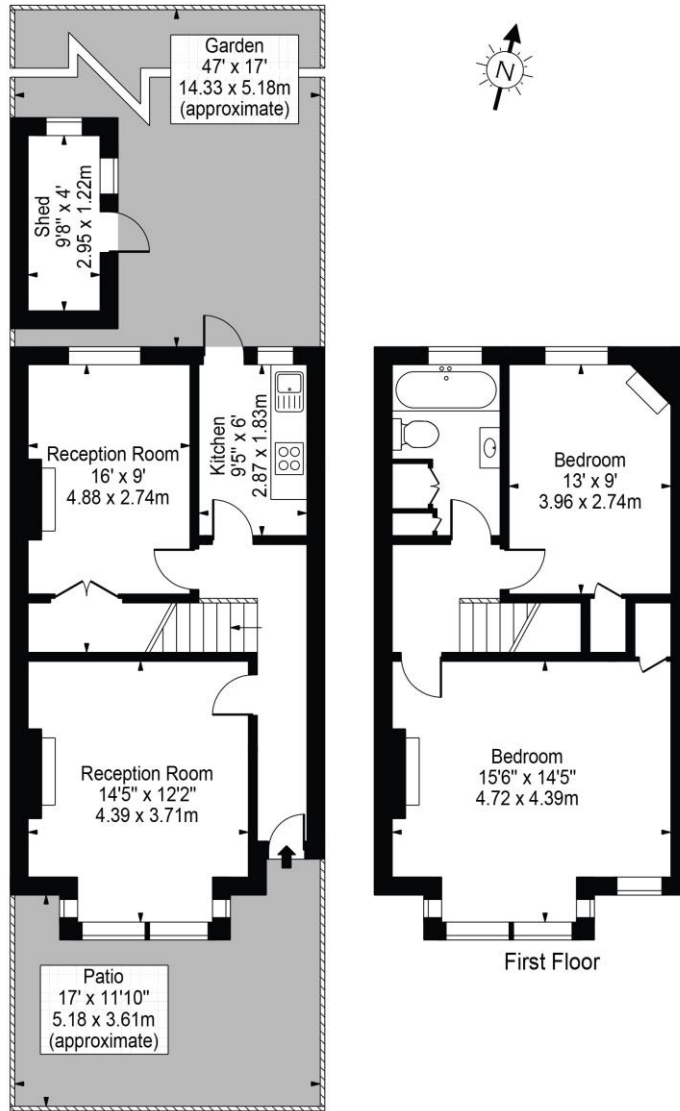
**Winkworth**

for every step...

# Drayton Grove, W13

Approx. Gross Internal Area 912 Sq Ft - 84.73 Sq M  
(Excluding Shed)

Approx. Gross Internal Area Of Shed 39 Sq Ft - 3.60 Sq M



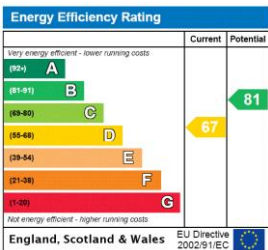
Ground Floor

First Floor

For Illustration Purposes Only - Not To Scale Floor Plan by Mira Nikolova Photography

This floor plan should be used as a general outline for guidance only and does not constitute in whole or in part an offer or contract. Any intending purchaser or lessee should satisfy themselves by inspection, searches, enquiries and full survey as to the correctness of each statement. Any areas, measurements or distances quoted are approximate and should not be used to value a property or be the basis of any sale or let.

This floorplan is for illustration purposes only and is not to scale. The position and size of doors, windows, appliances and other features are approximate.



Ealing & Acton | 0208 896 0123 | ealing@winkworth.co.uk



for every step...

winkworth.co.uk

Winkworth wishes to inform prospective buyers and tenants that these particulars are a guide and act as information only. All our details are given in good faith and believed to be correct at the time of printing but they don't form part of an offer or contract. No Winkworth employee has authority to make or give any representation or warranty in relation to this property. All fixtures and fittings, whether fitted or not are deemed removable by the vendor unless stated otherwise and room sizes are measured between internal wall surfaces, including furnishings.