



St Elmo Road, W12

£550,000 Leasehold

A charming two bedroom Edwardian maisonette with private garden and scope to extend in to the loft space.

Reception Room | Kitchen | 2 Bedrooms | Bathroom | Garden | 697 Sq Ft / 65 Sq M | Council Tax Band D | EPC Rating Band D

Winkworth



LOCATION

St Elmo Road is to the west of Askew Road, with the area offering an eclectic mix of independent shops, cafes and restaurants, with the open space of Wendell Park and Ravenscourt Park close by and the amenities of Chiswick High Road also within easy reach. Stamford Brook, Goldhawk Road and Ravenscourt Park stations are the closest, whilst Shepherd's Bush Central Line and London Overground stations are a little further away at Shepherd's Bush Green.

DESCRIPTION

Offered in good order throughout, this delightful Edwardian maisonette offers accommodation comprising entrance hall, kitchen with space for dining table, reception room, bedroom, second bedroom/study and bathroom. The property further benefits from its own private entrance, garden and there is scope to extend in to the loft space (which is demised to the flat), subject to the usual consents. There is also a new lease of 999 years.





LOCAL AUTHORITY

Ealing Council

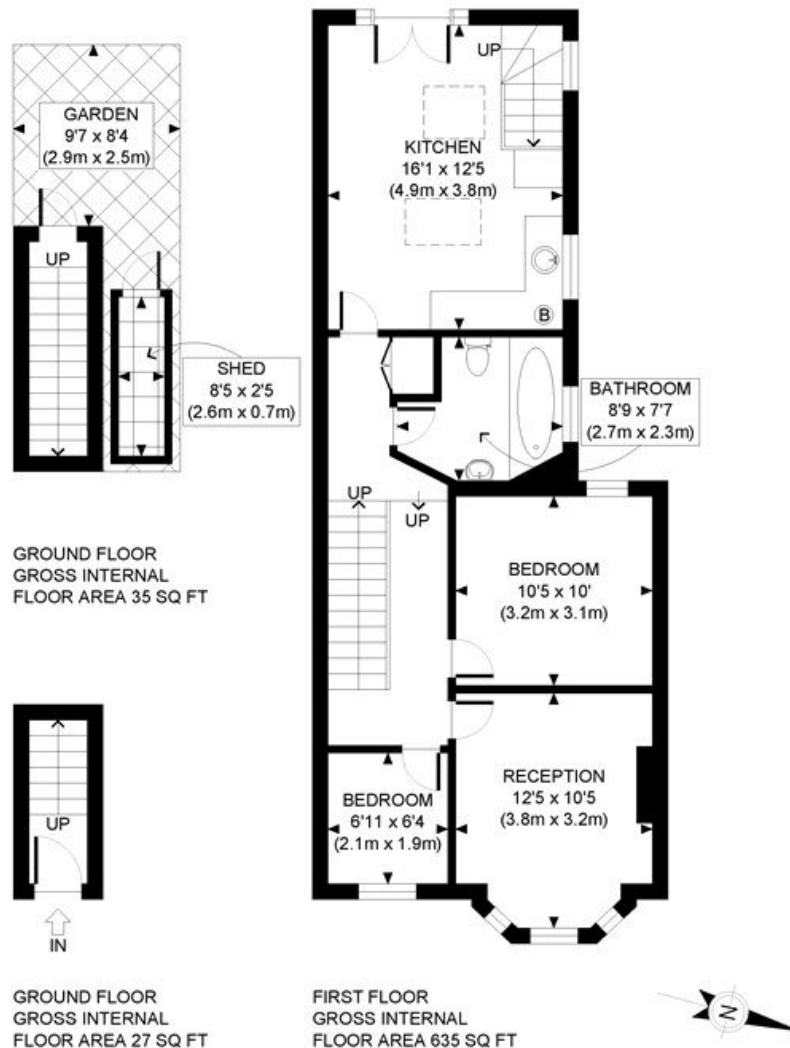
TENURE

Leasehold.

PRICE: £550,000 Leasehold



Energy Efficiency Rating		
	Current	Potential
Very energy efficient - lower running costs		
(92+) A		
(81-91) B		
(69-80) C		79
(55-68) D	62	
(39-54) E		
(21-38) F		
(1-20) G		
Not energy efficient - higher running costs		
England, Scotland & Wales	EU Directive 2002/91/EC	



APPROX. GROSS INTERNAL FLOOR AREA: 697 SQ FT/ 65 SQM



This plan is for illustrative purposes only and should be used as such by any prospective client. Whilst every attempt has been made to ensure the accuracy of the Floor Plan contained here, measurements of the doors, windows, rooms and any other items are approximate and no responsibility is taken for any errors, omissions, or misstatement. The services, systems and appliances shown have not been tested and no guarantee as to the operability or efficiency can be given.

PROPERTY PHOTO PLANS COOK
THE TOP END OF PROPERTY SOLUTIONS

The displayed square footage is taken from the floor plans with measurements created using the Royal Institute of Chartered Surveyors' Code of Practice for Measuring. These measurements are approximate and included for illustrative purposes only. Winkworth does not make any representation as to the accuracy of these measurements and you should seek to verify them for yourself. Winkworth accept no liability for any loss you may suffer if you rely on these measurements.

Shepherds Bush | 020 8735 3266 | shepherdsbush@winkworth.co.uk



for every step...

Under the Property Misdescriptions Act 1991, these Particulars are a guide and act as information only. All details are given in good faith and are believed to be correct at time of printing. Winkworth give no representation as to their accuracy and potential purchasers or tenants must satisfy themselves by inspection or otherwise as to their correctness. No employee of Winkworth has authority to make or give any representation or warranty in relation to this property.