



## Cambridge St, SW1V

£2,900 PER MONTH

FURNISHED

### AT A GLANCE

- One master bedroom
- One Single bedroom/study
- Newly renovated
- High spec kitchen
- Modern bathroom
- High ceilings

**Winkworth**

for every step...



Energy Efficiency Rating		
	Current	Potential
Very energy efficient - lower running costs		
(92+) <b>A</b>		
(81-91) <b>B</b>		
(69-80) <b>C</b>		77
(55-68) <b>D</b>	63	
(39-54) <b>E</b>		
(21-38) <b>F</b>		
(1-20) <b>G</b>		
Not energy efficient - higher running costs		
England, Scotland & Wales	EU Directive 2002/91/EC	

## CAMBRIDGE ST, SW1V

£2,900 PER MONTH

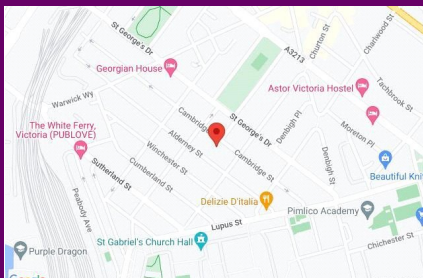
FURNISHED

A stunning, two bed, Stucco fronted Victorian conversion in the heart of the Pimlico grid.

The flat has recently been refurbished throughout and comprises of a light and airy, open plan kitchen and living area with floor length sash windows & parquet flooring. The kitchen benefits from Bosch and Smeg appliances and ample storage. The private balcony can be found just off the kitchen. A modern bathroom with rainfall shower over bath, a master bedroom with a large wardrobe and a second room perfect as a Study, spare room or nursery.

The apartment is offered on a furnished basis and from the 2nd September.

The property is well located for great transport links, Pimlico Underground (Victoria Line, 0.5 miles) and Victoria Station (0.6 miles) with multiple tube lines, mainline trains in and out of the City and Victoria Coach station. There is also a plethora of shops, restaurants and cafes on your doorstep.

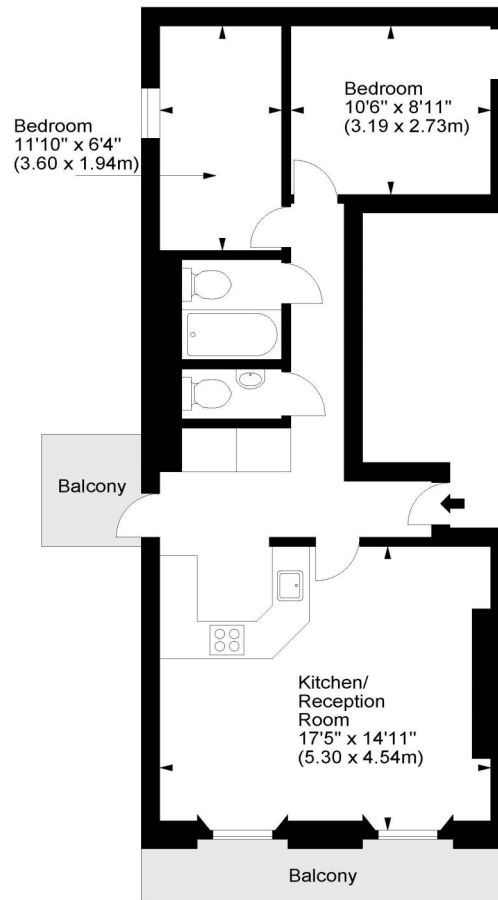


winkworth wishes to inform prospective buyers and tenants that these particulars are a guide and act as information only. All our details are given in good faith and believed to be correct at the time of printing but they don't form part of an offer or contract. No winkworth employee has authority to make or give any representation or warranty in relation to this property. All fixtures and fittings, whether fitted or not are deemed removable by the vendor unless stated otherwise and room sizes are measured between internal wall surfaces, including fireplaces.

## Cambridge Street, SW1



Approx. Gross Internal Area  
604 Sq Ft - 56.11 Sq M



First Floor

For illustration purposes only. Not to scale.  
All measurements are taken and shown at floor level.  
www.r3photography.co.uk © Photography / Floor Plans / Lease Plans / EPCs



Pimlico & Westminster | 020 7828 1786 |  
pimlico@winkworth.co.uk

winkworth.co.uk/pimlico

**Winkworth**

for every step...