



57 Cutforth Way, Romsey, Hampshire, SO51 0BN

Winkworth



BEAUTIFUL TOWN HOUSE

The property is located only a short drive from Romsey town centre and its extensive amenities. The cathedral cities of Winchester and Salisbury are within easy commute. Along with the commercial centres of Southampton and Bournemouth, both with international airports. In addition there are good motorway and rail links to London and beyond.

This beautiful, well presented three bedroom town house is located on the Abbotswood development having been built only four years ago and is still covered by NHBC. The light and airy accommodation comprises entrance hallway leading to a well-appointed kitchen/dining room with integrated appliances with double doors to the rear garden. The ground floor also comprises a utility room and downstairs cloakroom. To the first floor the sitting room is of generous proportions with a Juliette balcony. Also on the first floor there is a double bedroom and family bathroom. To the second floor is the master bedroom with en suite facilities and built in wardrobes and a further double bedroom.

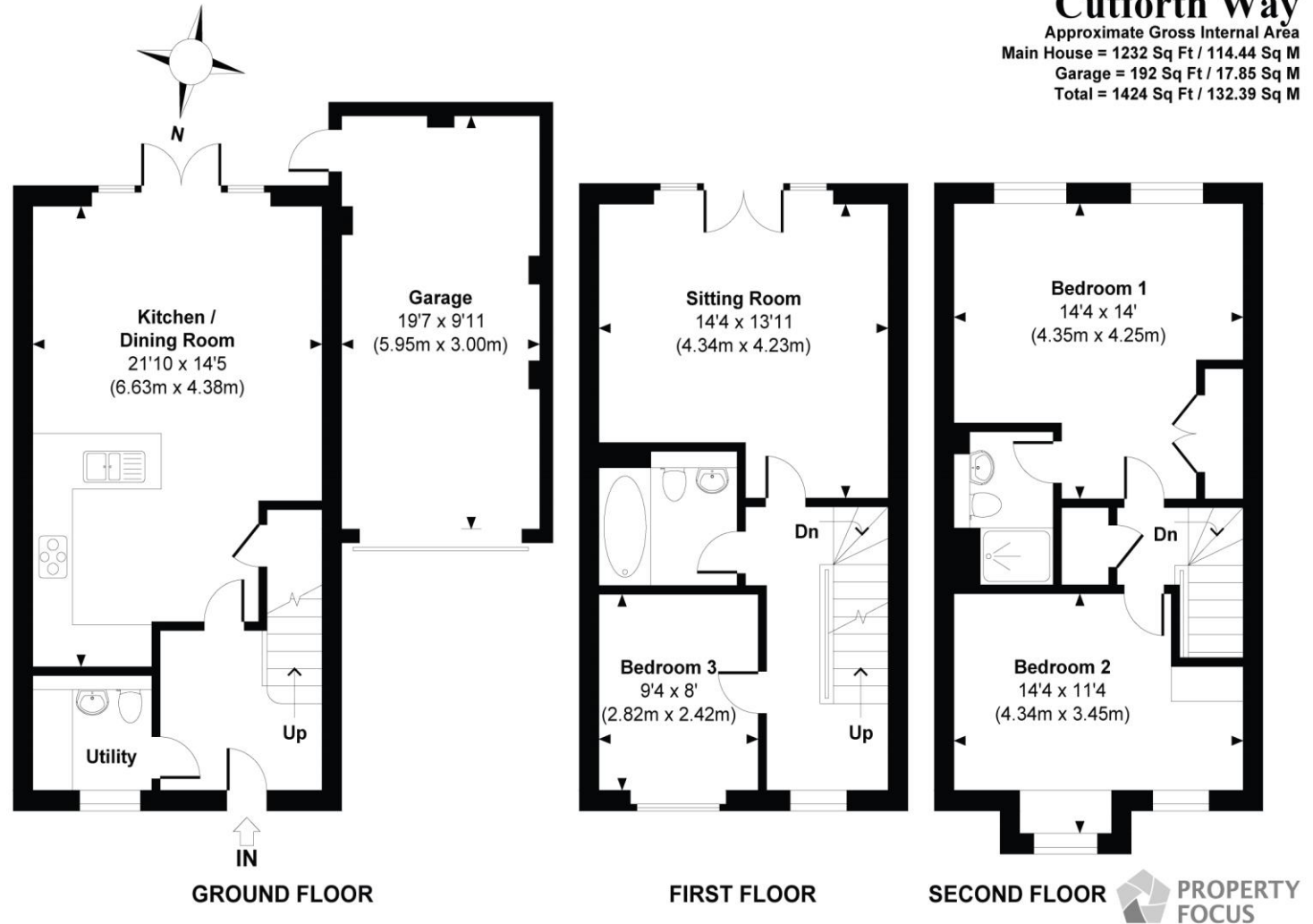
Outside of the property benefits from drive way parking and a single garage. To the rear, the garden is enclosed with terraced area ideal for 'al fresco' dining the remainder being synthetic lawn, easy to care for and ideal for families.



Winkworth

Address: 57 Cutforth Way, Romsey, Hampshire, SO51 0BN

Council Tax Band: "D"



Cutforth Way
Approximate Gross Internal Area
Main House = 1232 Sq Ft / 114.44 Sq M
Garage = 192 Sq Ft / 17.85 Sq M
Total = 1424 Sq Ft / 132.39 Sq M

© www.propertyfocus.co | Professional Property Photography & Floorplans
Measured and drawn to RICS guidelines. Plan is for illustrative purposes only and is not to scale. All dimensions, North point orientation and the size and placement of features are approximate and should not be relied on as a statement of fact. No responsibility is taken for any error, omission or misrepresentation.

winkworth.co.uk/romsey

Winkworth Romsey

18 Market Place, Romsey, Hampshire, SO51 8NA
01794 511911 | romsey@winkworth.co.uk

winkworth.co.uk/romsey

Winkworth Winchester

2 Black Swan Buildings, Southgate Street,
Winchester, Hampshire, SO23 9DT
01962 866777 | winchester@winkworth.co.uk

Winkworth Mayfair & Country House Department

11 Berkeley Street, Mayfair, London, W1J 8DS
020 7871 0589 | countryhouse@winkworth.co.uk

Winkworth

See things differently