



## Gaspar Mews, South Kensington, London, SW5

£576 per week\* / £2,496 per month – Unfurnished

A charming and well-proportioned one bedroom flat with its own front door, located on this quiet Mews.

1 Bedroom | 1 Reception Room | 1 Bathroom | Ground Floor Flat | 600 Approx sq ft | EPC: C | Tax Band G

APPLICANT FEES MAY BE APPLICABLE  
DEPOSIT OF 5 WEEKS' RENT  
HOLDING DEPOSIT OF 1 WEEK'S RENT

**Winkworth**



## DESCRIPTION

This one bedroom flat, which extends to approximately 600sq/ft (56sq/m) of well-arranged accommodation, is presented in good order throughout. The property benefits from a well-proportioned reception room with two large sash windows, modern shower room, fully fitted kitchen and a bedroom with a large walk-in wardrobe.

The flat features wooden floors throughout and is available immediately on an unfurnished basis.

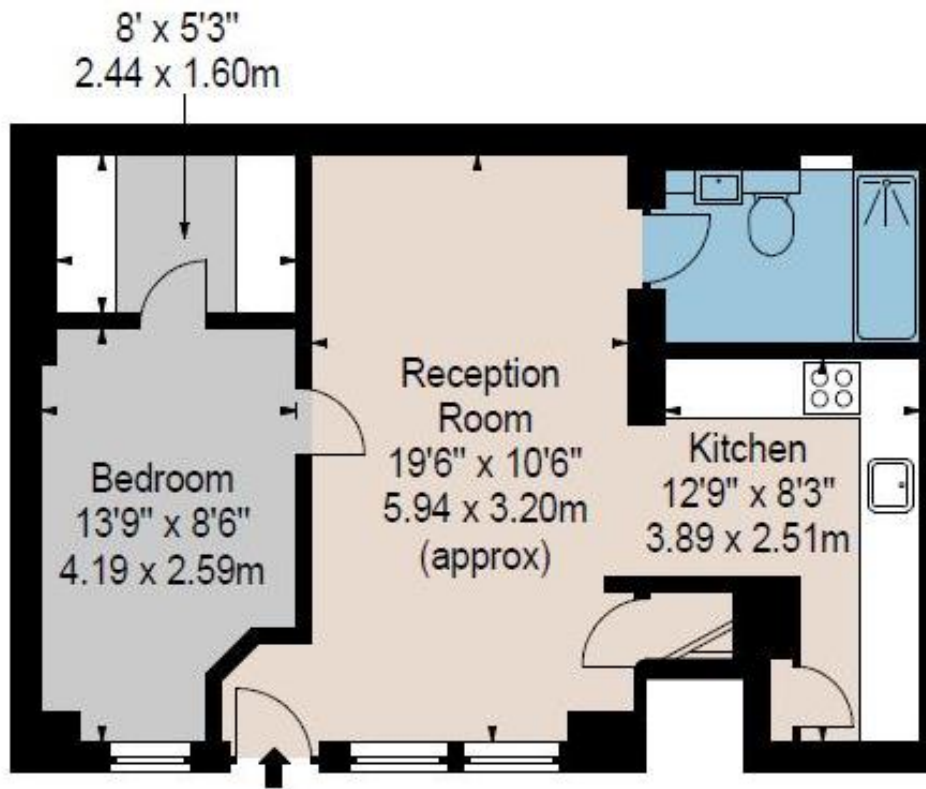
## ACCOMMODATION

1 Bedroom, 1 Reception Room, 1 Bathroom,  
Ground Floor Flat, Unfurnished,  
600 Approx Sq ft

## COUNCIL TAX BAND

Band G





GROUND FLOOR

Energy Efficiency Rating		
	Current	Potential
Very energy efficient - lower running costs		
(92+) <b>A</b>		
(81-91) <b>B</b>		
(69-80) <b>C</b>	72	77
(55-68) <b>D</b>		
(39-54) <b>E</b>		
(21-38) <b>F</b>		
(1-20) <b>G</b>		
Not energy efficient - higher running costs		
England, Scotland & Wales	EU Directive 2002/91/EC	

This floorplan is for illustration purposes only and is not to scale. The position and size of doors, windows, appliances and other features are approximate.

\*Please note, the rent cannot be paid on a weekly basis

South Kensington Lettings | 020 7370 6767 | lettings.southken@winkworth.co.uk



winkworth.co.uk

for every step...

Winkworth wishes to inform prospective buyers and tenants that these particulars are a guide and act as information only. All our details are given in good faith and believed to be correct at the time of printing but they don't form part of an offer or contract. No Winkworth employee has authority to make or give any representation or warranty in relation to this property. All fixtures and fittings, whether fitted or not are deemed removable by the vendor unless stated otherwise and room sizes are measured between internal wall surfaces, including furnishings.