



PEABODY ESTATE, SE24  
£1,350 PER MONTH PART FURNISHED

## A GROUND FLOOR PURPOSE-BUILT ONE BEDROOM APARTMENT SET ON THE POPULAR PEABODY ESTATE IN HERNE HILL

Herne Hill | 0207 501 8950 | hernehill@winkworth.co.uk

**Winkworth**

for every step...

[winkworth.co.uk](http://winkworth.co.uk)

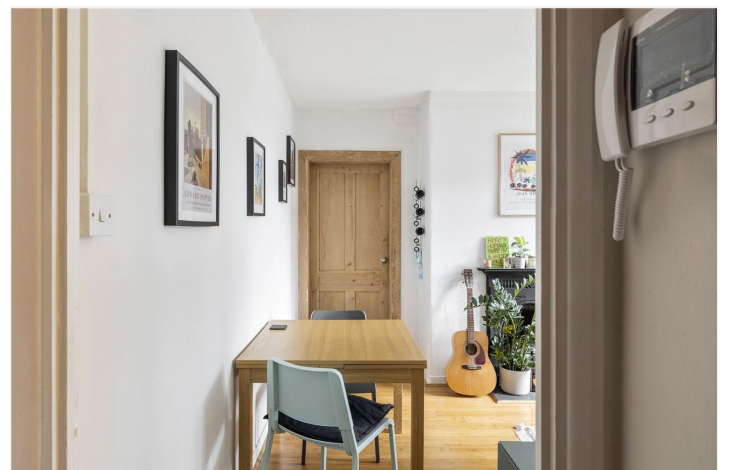


## DESCRIPTION:

Available exclusively through Winkworth we are delighted to present this bright and airy, one double bedroom apartment. The accommodation briefly comprises of a good-sized reception room with alcove shelving/storage, a modern eat-in kitchen equipped with the usual integrated appliances and plenty of wall and base units giving you ample storage. The modern bathroom has a shower over the bath, a hand wash basin and a WC and leading through the hallway there is a spacious, good-size double bedroom. The flat is well-presented with wood floors and double glazing throughout and benefits from free residents' parking in the Estate and a residents' bike shed. The property is ideally located close to the many shops, bars and eateries in Herne Hill and just a few minutes' walk from the lovely Brockwell Park. There are good transport links into London from nearby Herne Hill station. Available from the 04th of March 2024 on a part-furnished basis, early viewings are highly recommended.

## AT A GLANCE

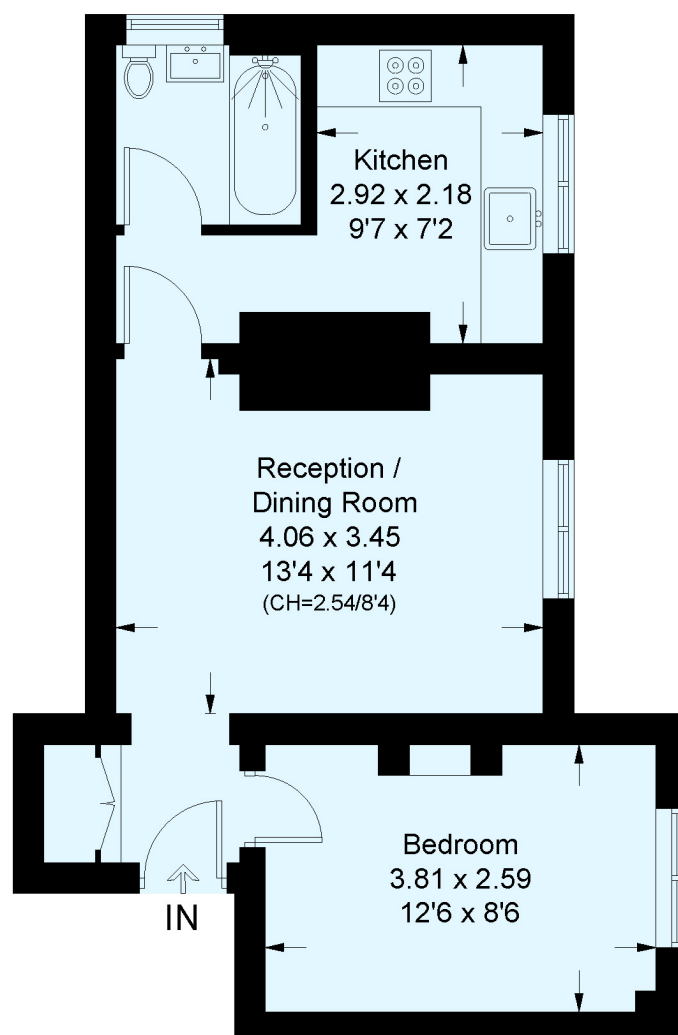
- Ground Floor Purpose Built Flat
- One Double Bedroom
- Reception/Diner
- Separate Kitchen/Breakfast Room
- Bathroom
- Part Furnished
- Available 07th March 2024
- Sole Agent





## Peabody Estate, SE24

Approximate Floor Area = 41.5 sq m / 447 sq ft  
Including Limited Use Area (0.8 sq m / 9 sq ft)



### Upper Ground Floor

This plan is for layout guidance only. Not drawn to scale unless stated. Windows and door openings are approximate. Whilst every care is taken in the preparation of this plan, please check all dimensions, shapes and compass bearings before making any decisions reliant upon them. (ID804891)

This floorplan is for illustration purposes only and is not to scale. The position and size of doors, windows, appliances and other features are approximate.

Herne Hill | 0207 501 8950 | hernehill@winkworth.co.uk

**Winkworth**

for every step...

*winkworth.co.uk*

Winkworth wishes to inform prospective buyers and tenants that these particulars are a guide and act as information only. All our details are given in good faith and believed to be correct at the time of printing but they don't form part of an offer or contract. No Winkworth employee has authority to make or give any representation or warranty in relation to this property. All fixtures and fittings, whether fitted or not are deemed removable by the vendor unless stated otherwise and room sizes are measured between internal wall surfaces, including furnishings.