



KENSINGTON GARDENS SQUARE, W2

£700,000 SHARE OF FREEHOLD (999 YEARS REMAINING)

A GRADE II LISTED, UNMODERNISED FIRST FLOOR, ONE BEDROOM FLAT, EXTENDING TO 567SQ.FT WITH GRAND PROPORTIONS AND WONDERFUL VIEWS OVER KENSINGTON GARDENS SQUARE.

1 Bedroom, 1 Reception Room, 1 Bathroom, Flat/Apartment, First Floor, Communal Gardens, Unmodernised decoration, 567 Approx Sq Ft, Service Charge £2,300 p/a, Ground Rent N/A

Winkworth

Notting Hill Sales | 0207 727 3227 | nottinghill@winkworth.co.uk

winkworth.co.uk

for every step...



DESCRIPTION:

Situated on the first floor of an imposing Period Conversion, the accommodation currently comprises; entrance hall, kitchen, reception room, bedroom and bathroom. Requiring complete refurbishment, the flat makes an ideal opportunity to create a magnificent flat, with views and the right to apply for access to Kensington Gardens Square.

LOCATION:

Kensington Garden Square is located to the South of Westbourne Grove, a short walk to local restaurants, amenities and the local transport links to Central London/Paddington.

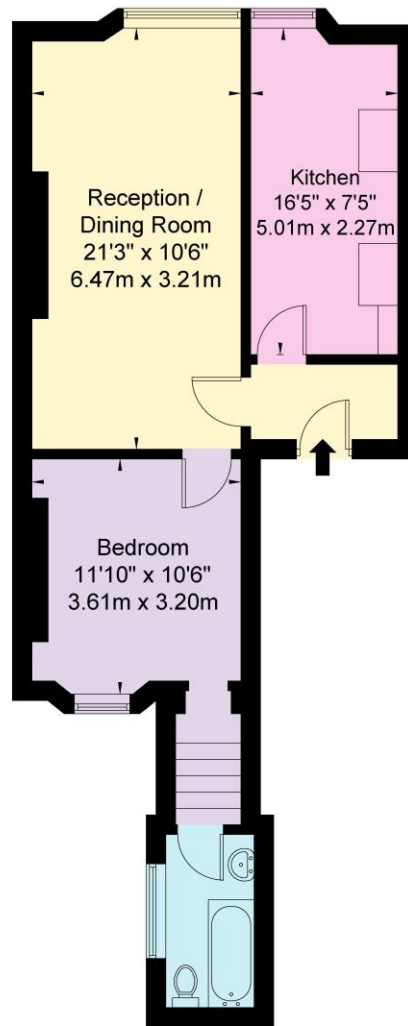
LOCAL AUTHORITY AND COUNCIL TAX BAND:

City Of Westminster (Band E)



Kensington Gardens Square, W2 4BH

Approx. Gross Internal Area = 52.7 sq m / 567 sq ft



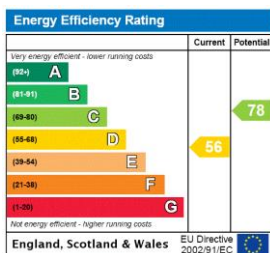
First Floor

Ref

Copyright **BLEU PLAN**

The Floor plan is not to scale and measurements and areas shown are approximate and therefore should be used for illustrative purposes only. The plan has been prepared in accordance with the RICS code of Measuring Practice and whilst we have confidence in the information produced it must not be relied on. If there is any aspect of particular importance, you should carry out or commission your own inspection of the property.
Copyright @ BLEUPLAN

This floorplan is for illustration purposes only and is not to scale. The position and size of doors, windows, appliances and other features are approximate.



Notting Hill Sales | 0207 727 3227 | nottinghill@winkworth.co.uk



winkworth.co.uk

for every step...

winkworth wishes to inform prospective buyers and tenants that these particulars are a guide and act as information only. All our details are given in good faith and believed to be correct at the time of printing but they don't form part of an offer or contract. No Winkworth employee has authority to make or give any representation or warranty in relation to this property. All fixtures and fittings, whether fitted or not are deemed removable by the vendor unless stated otherwise and room sizes are measured between internal wall surfaces, including furnishings.