



PINEHURST COURT, LONDON, W11

£375 PER WEEK (£1,625 PCM) Furnished

A LOVELY BRIGHT STUDIO FLAT IN THE HEART OF NOTTING HILL IN THIS POPULAR BUILDING SURROUNDED BY GARDENS.

Long Let, 1 Reception Room, 1 Bathroom, Flat/Apartment, Upper Floor with Lift, Communal Gardens, Furnished

Winkworth

Notting Hill Lettings | 020 77273227 | nottinghill@winkworth.co.uk

winkworth.co.uk

See things differently



DESCRIPTION:

A lovely bright studio flat in the heart of Notting Hill in this popular building. The flat is well equipped with double bed, separate sofa, kitchenette, storage, and separate bathroom. There are wooden floors throughout and lift access. The building has a porter, secure bike parking area and boasts lovely gardens surrounding which are enclosed and only accessible to residents.

LOCATION:

Pinehurst court is on Colville Gardens, a pretty and quiet street just off Lonsdale Road and Colville terrace. A minutes' walk from all the boutique shops of Westbourne Grove and Portobello Market.

Utilities:

Electricity – Mains

Water – Mains

Sewerage – Mains

Heating – Gas

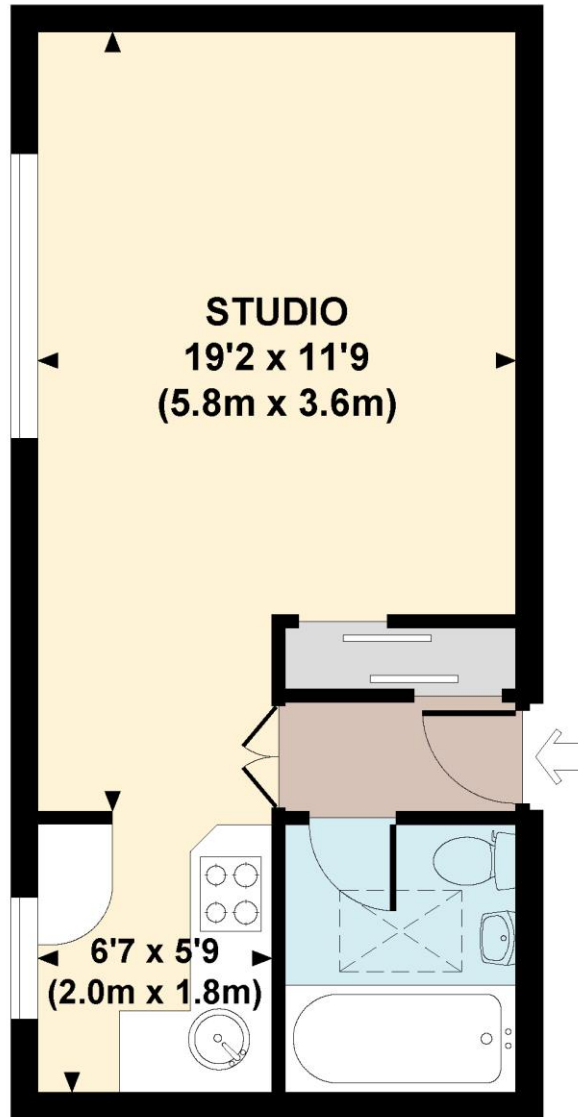
Broadband <https://checker.ofcom.org.uk/en-gb/broadband-coverage>

Mobile Coverage <https://checker.ofcom.org.uk/en-gb/mobile-coverage>

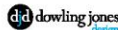


PINEHURST COURT, W11

Approx. gross internal area
306 Sq Ft. / 28 Sq M.

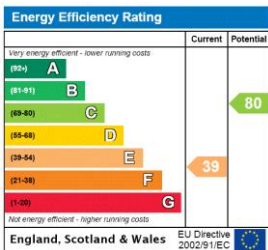


FIFTH FLOOR



Every attempt has been made to ensure the accuracy of this floor plan however, measurements are approximate and for illustration purposes only. Not to scale. Photography, floor plans & brochures © 2011 Dowling Jones Design Ltd www.dowlingjonesdesign.com 020 7610 9833 / 07783 974 209

This floorplan is for illustration purposes only and is not to scale. The position and size of doors, windows, appliances and other features are approximate.



Notting Hill | 020 77273227 | nottinghill@winkworth.co.uk

Winkworth

winkworth.co.uk

See things differently

winkworth wishes to inform prospective buyers and tenants that these particulars are a guide and act as information only. All our details are given in good faith and believed to be correct at the time of printing but they don't form part of an offer or contract. No winkworth employee has authority to make or give any representation or warranty in relation to this property. All fixtures and fittings, whether fitted or not are deemed removable by the vendor unless stated otherwise and room sizes are measured between internal wall surfaces, including furnishings.