



HOBART BUILDING, WARDS PLACE, LONDON, E14
£4,250 PER MONTH FURNISHED

AN EXQUISITE 1022 SQ/FT TWO BEDROOM APARTMENT
ON THE 44TH FLOOR OF THE HOBART BUILDING, AN
AWARD WINNING BALLYMORE DEVELOPMENT.

Shoreditch | 020 7749 7650 | shoreditch@winkworth.co.uk

Winkworth

Tenant Fees Apply: Details of fees for tenant referencing, tenancy agreement admin fees and renewal fees are available on the Winkworth website and the link can be found with the displayed rent for the property. Tenants should ensure they are fully conversant with these upfront fees and other costs that are involved at the outset of the tenancy before making an offer to rent and your local Winkworth office will provide written details upon request.

winkworth.co.uk

See things differently



DESCRIPTION:

An exquisite 1022 sq/ft two bedroom apartment on the 44th floor of the Hobart Building, an award winning Ballymore development.

Comprising a bright and airy interior with carefully designed open plan living area leading to an exceptional wrap around terrace offering breath-taking views, fully integrated kitchen, main bedroom with luxury en-suite bathroom, second double bedroom and a very well appointed second bathroom.

Residents have an exclusive membership to The Wardian Club allowing access to a state of art gym facilities, 25m swimming pool, cinema and 24-hour concierge service.

Canary Wharf is home to a wealth of restaurants and boutique shops offering luxury fashion, jewellery and more.

The Wardian benefits from excellent transport connections including the Jubilee Line, Docklands Light Railway, Thames Clipper boat services and European flights via London City Airport.

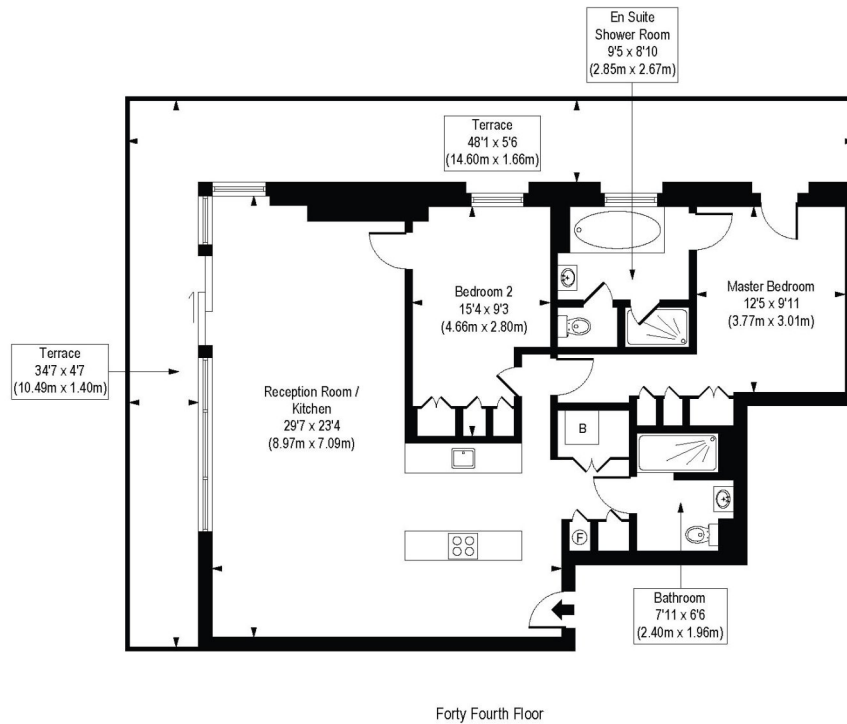
Winkworth



Winkworth

Wards Place, E14

Approx. Gross Internal Floor Area 1027 sq. ft / 95.39 sq. m



COMPLIANT WITH RICS CODE OF MEASURING PRACTICE. Floorplan is for illustrative purposes only and is not to scale. Every attempt has been made to ensure the accuracy of the floorplan shown, however all measurements, fixtures, fittings and data shown are an approximate interpretation for illustrative purposes only. Liability for errors, omissions or mis-statement through negligence or otherwise is hereby excluded.

This floorplan is for illustration purposes only and is not to scale. The position and size of doors, windows, appliances and other features are approximate.

Shoreditch | 020 7749 7650 | shoreditch@winkworth.co.uk

Winkworth

winkworth.co.uk

See things differently

Winkworth wishes to inform prospective buyers and tenants that these particulars are a guide and act as information only. All our details are given in good faith and believed to be correct at the time of printing but they don't form part of an offer or contract. No Winkworth employee has authority to make or give any representation or warranty in relation to this property. All fixtures and fittings, whether fitted or not are deemed removable by the vendor unless stated otherwise and room sizes are measured between internal wall surfaces, including furnishings.