



**UNDERHILL ROAD, EAST DULWICH, SE22
OFFERS IN EXCESS OF £950,000 FREEHOLD**

A CHARMING, WELL PRESENTED FAMILY HOME, SITUATED IN A FANTASTIC LOCATION IN SE22.

Dulwich | 020 8299 2722 | dulwich@winkworth.co.uk

Winkworth

winkworth.co.uk

See things differently



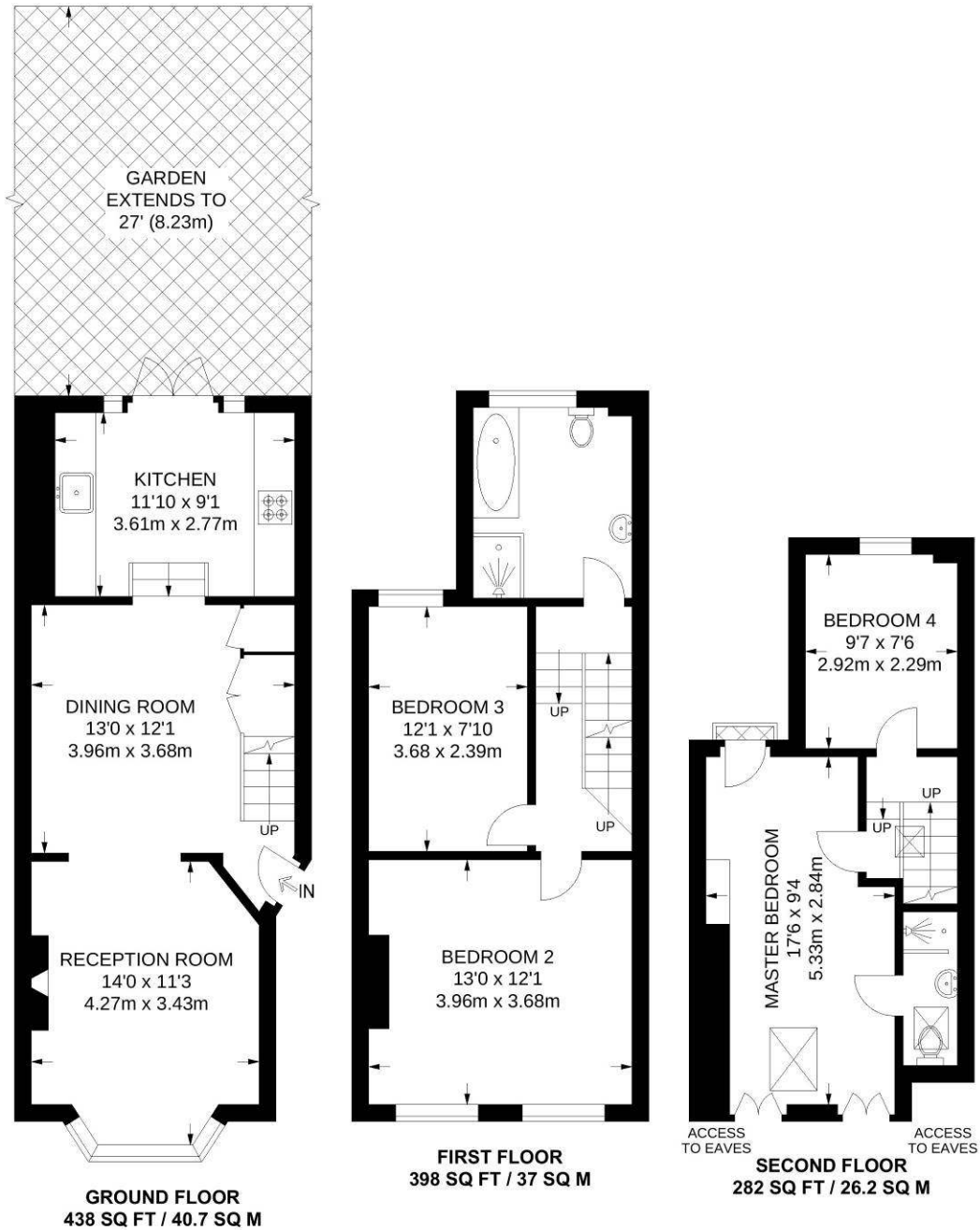
DESCRIPTION:

A charming, well presented family home, situated in a fantastic location in SE22. This lovely family home is set back from the road behind a landscaped front garden and boasting an impressive south facing garden. The property comprises on the ground floor a large reception, set behind the original bay window and boasting lovely original floors and high ceilings. There is a second reception/ reading room that leads through to the kitchen diner to rear. The kitchen is fully fitted and boasts lovely wooden worktops and lots of storage. The first floor comprises two large double bedrooms and a large family bathroom. The loft has been extended to allow a large master en-suite and fourth bedroom to rear. All bedrooms are presented to a high standard and not too long refurbished. The property is situated close to Lordship Lane and Forest Hill Road with an impressive array of shops, bars and amenities and the green open spaces of Peckham Rye are just a short walk away. Transport links are provided via East Dulwich station into London Bridge, easy reach to Honor Oak with connections to the East London line.

AT A GLANCE

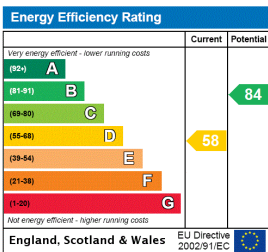
- Four Bedrooms
- Victorian Half House
- Double Reception
- Bright and Airy Kitchen-Diner
- Bathroom & Ensuite Shower Room
- South Facing Garden
- Freehold
- School Catchment Area
- Close To Peckham Rye Park





APPROXIMATE GROSS INTERNAL AREA
1118 SQ FT / 103.9 SQ M

This floorplan is for illustration purposes only and is not to scale. The position and size of doors, windows, appliances and other features are approximate.



Dulwich | 020 8299 2722 | dulwich@winkworth.co.uk



winkworth.co.uk

See things differently

Winkworth wishes to inform prospective buyers and tenants that these particulars are a guide and act as information only. All our details are given in good faith and believed to be correct at the time of printing but they don't form part of an offer or contract. No Winkworth employee has authority to make or give any representation or warranty in relation to this property. All fixtures and fittings, whether fitted or not are deemed removable by the vendor unless stated otherwise and room sizes are measured between internal wall surfaces, including furnishings.