



NORTHPOINT HOUSE, ESSEX ROAD, LONDON, N1
£390,000 LEASEHOLD

A WONDERFUL ONE BEDROOM GROUND FLOOR APARTMENT IN THE HEART OF ISLINGTON

Islington | 0207 354 2480 | islington@winkworth.co.uk

Winkworth



DESCRIPTION:

A fantastic one bedroom flat set within this well-maintained purpose built development. The property is positioned on the ground floor and boasts well-proportioned rooms throughout. Accommodation comprises of a good-sized double bedroom complete with inbuilt storage, bathroom and a superb open plan kitchen/living room creating the perfect entertaining space. The flat further benefits from secure entry system and bike storage.

Northpoint House is a small development which benefits from secure entry and is set on an exceptionally convenient location on Essex road. The flat is within easy reach of the restaurants, bars and boutique shops on Upper Street as well as being just moments from a terrific selection of restaurants and independent shops, including the iconic De Beauvoir Deli on Southgate Road. Transport to the City and Canary Wharf is easily facilitated by the overground services from Essex Road and various bus routes along Southgate road whilst the frequent buses on Essex Road provide easy access to the West End. Highbury and Islington station offers the closest underground service on the Victoria line whilst Angel station on the Northern line is also within easy reach. Kings Cross is only a couple of stops away and from here international links are facilitated from St Pancras.

Winkworth

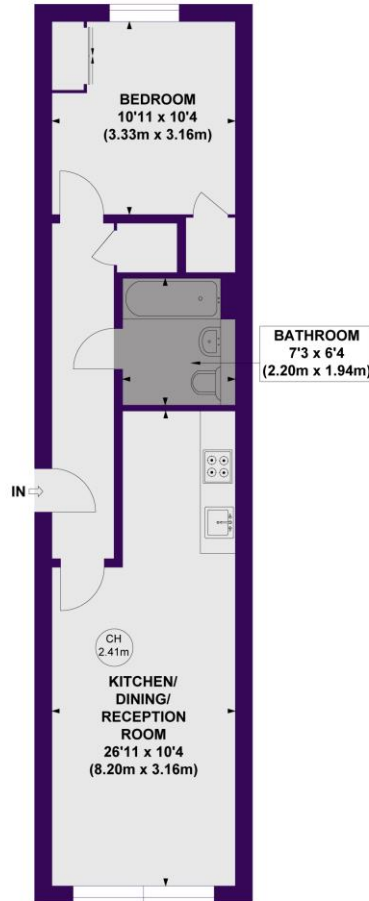


Winkworth

North Point House, N1

Approx. Gross Internal Floor Area 507 sq. ft / 47.14 sq. m

Key :
CH - Ceiling Height

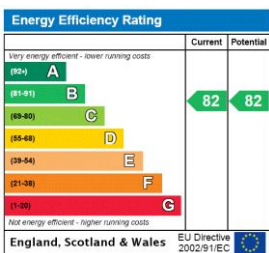


GROUND FLOOR
GROSS INTERNAL
FLOOR AREA 507 SQ FT



COMPLIANT WITH RICS CODE OF MEASURING PRACTICE Floorplan is for illustrative purposes only and is not to scale. Every attempt has been made to ensure the accuracy of the floorplan shown, however all measurements, fixtures, fittings and data shown are an approximate interpretation for illustrative purposes only. Liability for errors, omissions or mis-statement through negligence or otherwise is hereby excluded.

This floorplan is for illustration purposes only and is not to scale. The position and size of doors, windows, appliances and other features are approximate.



Islington | 0207 354 2480 | islington@winkworth.co.uk



winkworth.co.uk

See things differently

Winkworth wishes to inform prospective buyers and tenants that these particulars are a guide and act as information only. All our details are given in good faith and believed to be correct at the time of printing but they don't form part of an offer or contract. No Winkworth employee has authority to make or give any representation or warranty in relation to this property. All fixtures and fittings, whether fitted or not are deemed removable by the vendor unless stated otherwise and room sizes are measured between internal wall surfaces, including furnishings.