



**BEVERLEY DRIVE, EDGWARE, MIDDLESEX, HA8
OFFERS IN EXCESS OF £795,000 FREEHOLD**

FOUR BEDROOM SEMI DETACHED HOUSE

Kingsbury | 020 8204 0000 | kingsbury@winkworth.co.uk

Winkworth

for every step...

winkworth.co.uk



DESCRIPTION: A lovely semi-detached home in the ever-popular Beverley Drive Estate. The ground floor boasts an expansive double reception room, seamlessly leading into the kitchen/diner. This area connects to a spacious, well-appointed conservatory that flows effortlessly into a beautifully maintained garden, complete with a practical storage outbuilding. Also on the ground floor, you'll find a convenient shower room & a bedroom, ideal for versatile use as a home office. Upstairs, there are two double bedrooms, a comfortable single bedroom, & ample integrated storage, all complemented by a well-fitted family bathroom & separate W/C. Additional features include private driveway parking & the exciting potential for further extension (STPP). Perfectly positioned near Queensbury Station (Jubilee Line), making it ideal for commuters/ families alike, with easy access to local amenities & schools.

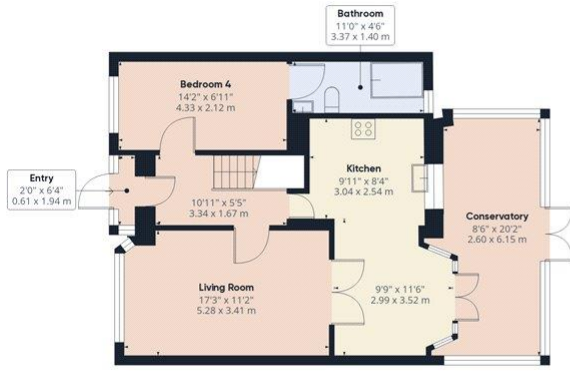


for every step...

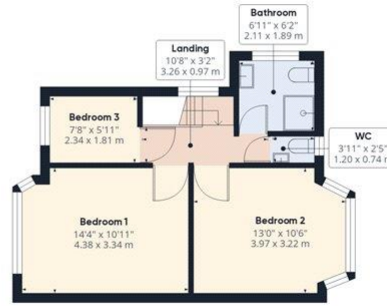


Winkworth

for every step...



Ground Floor Building 1



Floor 1 Building 1



Ground Floor Building 2

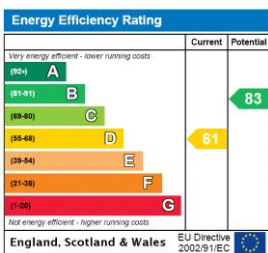
Approximate total area⁽¹⁾
1377.45 ft²
127.97 m²

(1) Excluding balconies and terraces

While every attempt has been made to ensure accuracy, all measurements are approximate, not to scale. This floor plan is for illustrative purposes only. Calculations are based on RICS IPMS 3C standard.

GIRAFFE360

This floorplan is for illustration purposes only and is not to scale. The position and size of doors, windows, appliances and other features are approximate.



Tenure: Freehold

Council Tax Band: E - Brent

Where no figures are shown, we have been unable to ascertain the information. All figures that are shown were correct at the time of printing.

Kingsbury | 020 8204 0000 | kingsbury@winkworth.co.uk

Winkworth

for every step...

winkworth.co.uk

Winkworth wishes to inform prospective buyers and tenants that these particulars are a guide and act as information only. All our details are given in good faith and believed to be correct at the time of printing but they don't form part of an offer or contract. No Winkworth employee has authority to make or give any representation or warranty in relation to this property. All fixtures and fittings, whether fitted or not are deemed removable by the vendor unless stated otherwise and room sizes are measured between internal wall surfaces, including furnishings.